

Concord™ Family Product Catalog

December 1999



CONTROL PANELS
Concord Express

Concord Express System Configuration	3
Concord System Configuration	6
Concord Commercial System Configuration	12
Sirens and Speakers	17
Hardwire Speakers	18
SAW Sensors	19
Crystal Intrusion Sensors	20
Crystal Fire and Smoke Sensors	23
Crystal Environmental Sensors	24
X-10 Lighting and Appliance Control	25
Central Station Monitoring	26
Hardwire Intrusion Contacts	27
Hardwire Miscellaneous Detectors	28
Sales, Print, and Video Materials	29

CONTROL PANELS
Concord Express



The Concord Security System allows the greatest flexibility of any system in the industry.

Learn Mode™ Technology.

ITI patented Learn Mode technology increases the ease and reliability of installations. Each sensor in a system has its own factory-programmed identity. ITI control panels “learn” the identity of each sensor in the system which eliminates programming errors in the field and other problems associated with the wireless systems of other manufacturers.

Installation Time

ITI Learn Mode systems are easy to install. Once the sensors are installed, they are added to the control panel memory; no sensor programming is required. Large residential systems can be installed in a single day by a relatively inexperienced installer. Smaller installations, such as apartments, can be completed in less than four hours.

Applications

ITI systems are used around the world to protect people and property. ITI systems are installed in museums for collection security, military installations for equipment security, utility companies for usage monitoring, nursing homes for resident monitoring, and universities for computer equipment security.

Home Automation

ITI systems go beyond burglar and fire protection. The home automation features available with some ITI systems allow the user to turn lights on and off at the touch of a button and control their heating and cooling system to save energy.

Two-Way Voice

ITI has responded to the growing concern over false alarm prevention and violent crime by developing its two-way voice technology. Two-way voice allows the central station operator to hear what is happening during an alarm and speak directly to the people on the premises.

Reporting and Off-site Programming Capabilities

ITI systems can report in SIA 2 and Contact ID formats and can report to most receivers. With many ITI systems, system programming changes can be made over the phone using ITI ToolBox™ upload/download software.

Ratings

The newest ITI products meet the following ratings:

- UL 985 (Household fire)
- UL 1023 (Household burglary)
- CSFM (California State Fire Marshall)
- ULC pending (UL of Canada)

ITI
T
e
c
h
n
o
l
o
g
y

Sensors

The flexible design of the Concord Family makes it compatible with most hardwire sensors and the ITI patented Learn Mode™ sensors. Each Learn Mode sensor has its own factory-programmed identification code that is “learned” by the control panel, which eliminates programming errors in the field.

SAW sensors are distinguished from ITI’s Crystal line by their use of Surface Acoustical Wave (SAW) radio technology and consumer-replaceable alkaline batteries. The SAW sensor offering includes a door/window sensor, PIR motion sensors, a water sensor, a freeze sensor, and a keychain touchpad.

BURGLARY

To protect against intrusion, theft and violence, hardwire sensors and all ITI Learn Mode wireless sensors can be added to the Concord Security Systems.

LIFE SAFETY

Sensors can also protect against the dangers of fire and carbon monoxide. Help is summoned in the event of a medical emergency.

ENVIRONMENTAL

Your customers can be warned of flooding basements and furnace failures before costly damage is done.

HOME AUTOMATION

Home Automation Modules, exclusive to the Hybrid, Integrated, and Commercial panels, provide added security and convenience. Lights can come on automatically at scheduled times during the day, the system can be controlled from any touchtone phone, and heating and air conditioning can be managed while your customer is away from home.

Concord Family Line

The Concord™ family of products is a complete source for all your security needs. From entry-level to high-end residential and new construction markets to commercial application, the Concord product line has the right solution for the job. It includes four product versions: Concord Express, Concord Hybrid, Concord Integrated, and Concord Commercial.

Concord is a hardwire hybrid family that provides reliable burglary detection, life safety protection, and home automation. Modular design gives Concord the flexibility you need to create system solutions your customers want.

Residential, New Construction, and Commercial Security Solutions

The flexible design of Concord is your key to satisfied customers and profitable upsell opportunities. Within the Concord product line, choose the panel that matches each customer’s individual budget and system requirements. From there, tailor the panel by selecting from its list of compatible options.

CONCORD EXPRESS

An integrated hardwire/wireless security system that provides burglary and fire detection. Offering up to 24 zones, Concord Express gives small- to mid-sized residential customers an affordable, dependable security choice.

CONCORD HYBRID

With 2 partitions and up to 76 zones, the Concord Hybrid panel is designed for mid to large residential and commercial security and home automation needs. The hybrid panel comes standard with 8 hardwire zones and can be expanded with additional hardwire inputs and outputs and RF receivers.

CONCORD INTEGRATED

The Concord Integrated includes 16 or 32 wireless zones built-in. Featuring 8 standard hardwire zones, 2 partitions and the ability to expand to 76 total zones, the integrated panel is an excellent offering for your high-end residential and commercial customers. The Integrated panel provides comprehensive hardwire and wireless security, life safety, and home automation solutions.

CONCORD COMMERCIAL

For commercial locations requiring UL listed burglary panels, Concord Commercial is the correct security choice. The commercial panel has the UL 1610 approval for commercial burglary. With 2 partitions and up to 76 zones, Concord Commercial provides complete intrusion protection for your commercial customers.

Concord Express System Configuration

To configure a Concord Express Security System, start by selecting the control panel components listed on pages 1 through 3.

Control Panel



60-806-95R
Concord Express Control Panel

Description/Features

- Provides commercial and residential security
- 6 built-in hardwire zones (24 total zones with optional expansion cards)
- 16 user-access codes with user-programmable authority
- 2-wire smoke detector compatibility
- 8 built-in wireless zones

Specifications

- 16.5 VAC, 25 VA, 60 Hz transformer
- 12 VDC, 4 Ah sealed, lead-acid backup battery
- Regulated, current limited, fused 12 VDC output
- 15-minute battery test under load every 24 hours
- Gray, wall mount, steel enclosure
- 40 to 100 °F operating temperature
- 9.0" wide x 11.0" high x 3.0" deep

Accessories

- 60-763** Lock and keys for Concord Express enclosure
- 60-791** Installation Programming Cable (connects LCD touchpad to panel for on-site programming)
- 60-793** Concord Expansion Module (holds up to six single-sized SuperBus modules)

Power



60-822
16.5 VAC, 25 VA Class II Transformer

- Provides primary power to the control panel

- 16.5 VAC power supply
- 120 VAC @ 60 Hz power requirement
- Beige
- 32 to 110 °F operating temperature



60-681
12 VDC, 4.0 Ah Lead Acid Battery

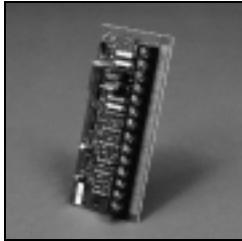
- Provides backup power to the control panel and hardwired devices when fully charged and AC power is out
- Backup battery provides up to 24 hours backup power
- 1-year battery life

CPU Expansion Cards

Description/Features

Specifications

Accessories



60-756
4-Zone Input/2 Form-C Relay Output
SnapCard

60-757
8-Zone Input SnapCard

- Attaches to the CPU circuit board Snapcard connection port
 - Includes one 12V two-wire smoke detector loop (provides 100 mA of power to Style B smoke detectors)
 - Provides three supervised UL Fire-rated hardwire loops
 - Includes two "Form C" contact relays controlled by a touchpad or a combination of states and system events
 - End-of-line supervision with 2K ohm resistor
 - Power source 12 VDC at 185 mA maximum
 - 40 to 120 °F operating temperature
 - 70% maximum relative humidity, non-condensing
 - 5.25" wide x 2" high x 0.75" deep
- 60-757:**
- Power source 12 VDC at 120 mA maximum
 - Includes two 12V two-wire smoke detector loop (provides 100 mA of power to Style B smoke detectors)
 - Provides six supervised UL Fire-rated hardwire loops

Hardwire Touchpads



60-820
SuperBus 2000 Fixed English LCD
Touchpad

- 27 defined English text status messages
- 1 line, 11 character LCD
- Time displayed during idle periods
- Keypad door with user-help label
- Built-in speaker sounds alarm, status sounds, and button-press beeps
- Variable pitch sounder for the hearing impaired.
- 3 panic buttons
- Auto learning
- Only compatible with Express
- 2 VDC nominal (8 - 15.4 VDC), 65 mA (maximum)
- 40 to 100 °F operating temperature
- Maximum Humidity: 70% relative, noncondensing
- White
- 5.55" wide x 4.5" high x 1.1" deep



60-746
SuperBus 2000 2x16 LCD Touchpad

- Provides complete on-site programming and operational control of the system
- 2 line, 16 character back-lit LCD
- Built-in speaker sounds alarm, status sounds, and button-press beeps
- Panic buttons for police, fire, and auxiliary emergencies
- Quick Guide slides out of touchpad to provide basic system instructions
- Auto Learning (Express Only)
- 12 VDC nominal (8 - 15.4 VDC), 90 mA (maximum)
- 40° to 100 °F operating temperature
- Maximum Humidity: 70% relative, noncondensing
- White
- Wall mounting
- 4.5" wide x 5.0" high x .92" deep



60-803-04
SuperBus 2000 2-line 2x20 LCD
Touchpad

60-804-04
SuperBus 2000 2-line 2x20 VFD
Touchpad

- Provides complete on-site programming and operational control of the system
 - 2 line, 20 character LCD
 - Built-in speaker sounds alarm, status sounds, and button-press beeps
 - Panic buttons for police, fire, and auxiliary emergencies
 - 2 line, 20 character VFD
 - Backlit Display
 - 12 VDC nominal (8 - 15.4 VDC), 115 mA (maximum)
 - 40 to 100 °F operating temperature
 - Maximum Humidity: 70% relative, noncondensing
 - Belgian Grey
 - 8.44" wide x 5.0" high x 1.25" deep
- 60-804-04:**
- 12 VDC nominal (8 - 15.4 VDC), 120 mA (maximum)

Wireless Touchpads

Description/Features

Specifications

Accessories



60-694-95R
5-Button SAW Keychain Touchpad
60-659-95R
4-Button SAW Keychain Touchpad
60-832-95
2-Button Encrypted Keychain Touchpad

- Recessed buttons help prevent false alarms
- LED confirms RF transmissions
- **60-694-95R:**
 - Single button panic control
 - Provides convenient operational control of the system
- Recessed buttons help prevent false alarms
- Green LED confirms button presses
- Light control capability (60-606-319.5 only)
- **60-832-95:**
 - Each transmission to the panel is unique to provide added resistance to code grabbers.

- 12 VDC, 33 mAh alkaline battery included
- 5-8 year battery life
- 10 to 120 °F operating temperature
- Black
- Keychain mounting (keychain ring included)
- 1.4" wide x 2.25" high x 0.38" deep

60-711 12V 33 mAh Alkaline Battery



60-606-319.5
4-Button Keychain Touchpad
60-607-319.5
2-Button Keychain Touchpad

- Provides convenient operational control of the system
- Recessed buttons help prevent false alarms
- Green LED confirms RF transmissions
- Light control capability (60-606-319.5 only)

- 12 VDC, 33 mAh alkaline battery included
- 5-8 year battery life
- 10 to 120 °F operating temperature
- Black
- Keychain mounting (keychain ring included)
- 1.4" wide x 2.25" high x 0.38" deep

34-034 12V 33 mAh Alkaline Battery
466-1050 4-Button Keychain Touchpad Specification Sheet 50/pk
466-1072 2-Button Keychain Touchpad Specification Sheet 50/pk



60-597-95
HiTech Hand Held Wireless Touchpad

- Provides portable operational control of the system
- Includes police, fire, and auxiliary panic buttons
- Light control capability
- Bypass capability
- Optional supervision reporting
- Can be wall mounted
- Quick arm
- Red/Green key press indicator light
- Convenient size and attractive styling

- 3 VDC LMN02 2/3 A button top battery (included)
- 5-8 year battery life
- Supervisory report every 64 minutes
- 10 to 120 °F operating temperature
- Belgian gray
- Portable or wall mounting (bracket included)
- 2.1" wide x 6.1" high x .86" deep

60-733 3 VDC LMN02 2/3 A Button Top Battery
444-1252 HiTech Hand Held Wireless Touchpad Mounting Bracket



60-348-10-95
Hand Held Wireless Touchpad

- Provides portable operational control of the system
- Includes police panic button
- Light control capability
- Bypass capability
- Optional supervision reporting
- Can be wall mounted
- Quick arm

- 3.5 VDC 1/2 AA lithium battery (included)
- 5-8 year battery life
- Supervisory report every 64 minutes
- 10 to 120 °F operating temperature
- Belgian gray
- Portable or wall mounting (bracket included)
- 2.56" wide x 2" high x .94" deep

34-026 3.5 VDC 1/2 AA Lithium Battery

Concord System Configuration

To configure a Concord Security System, start by selecting the control panel components listed on pages 4 through 9.

Control Panels



60-734
Concord Hybrid Control Panel

60-792-95R-16Z
Concord RF16 Integrated Panel

60-792-95R-32Z
Concord RF32 Integrated Panel

Description/Features

- Provides commercial and residential security and home automation system control
 - 8 built-in hardwire zones (76 total zones with optional expansion cards)
 - 2 partitions
 - 60 user access codes
 - Controls lights and appliances on a time schedule, individually, or in groups (using optional Line Carrier Card)
 - 2-wire smoke detector compatibility
- 60-792-95R-16Z:**
- 16 built-in wireless zones (76 total zones with optional expansion cards)
- 60-792-95R-32Z:**
- 32 built-in wireless zones (72 total zones with optional expansion cards)

Specifications

- 24 VAC, 30 or 50 VA, 60 Hz transformer
- 12 VDC, 4 Ah, or 7 Ah rechargeable, sealed, lead-acid backup battery
- Regulated, current limited, fused 12 VDC output
- 15-minute battery test under load every 24 hours
- Belgian gray, wall-mount, steel enclosure
- 40 to 100 °F operating temperature
- 12.25" wide x 12.25" high x 3" deep

Accessories

- 60-763** Lock and keys for Concord enclosure
- 60-791** Installation Programming Cable (connects LCD touchpad to panel for on-site programming)
- 60-793** Concord Expansion Module (holds up to six single-sized SuperBus modules)

Power



60-761
24 VAC, 25 VA Class II Transformer

60-762
24 VAC, 25 VA Class II Line Carrier Transformer - 1 Amp

60-778
24 VAC, 50 VA Class II Transformer

60-779
24 VAC, 50 VA Class II Line Carrier Transformer - 2.5 Amp

- Provides primary power to the control panel
- 60-762, 60-778, 60-779:**
- 60-762:**
- Required for X-10 devices and supervised wireless siren (SWIS)
 - Must add 60-755 Power Line Carrier Card
 - 60-762 and 779 required for X-10

- 24 VAC power supply
- 120 VAC @ 60 Hz power requirement
- 32 to 110 °F operating temperature
- Black
- 2.25" wide x 3.5" high x 1.75" deep

- 60-755** Power Line Carrier Card



60-681
12 VDC, 4.0 Ah Lead Acid Battery

60-680
12 VDC, 7.0 Ah Lead Acid Battery

- Provides backup power to the control panel and hardwired devices when fully charged and AC power is out
 - Backup battery provides up to 24 hours backup power
- 1 year battery life

None

SuperBus Radio Receivers



60-764-95R-16Z
16-zone SuperBus Radio Receiver

60-764-95R-32Z
32-zone SuperBus Radio Receiver

60-764-95R-MAX
76-zone SuperBus Radio Receiver

Description/Features

- Mounts in Concord panel or can be located up to 2,800 feet away
 - Receives signals from wireless sensors and touchpads then to the panel through the SuperBus digital data bus
 - Spatial diversity
 - Built-in tamper protection sounds an alarm if tampered with
 - Compatible with all ITI 319.5 MHz (crystal or SAW Learn Mode wireless sensors and touchpads)
 - Adds or extends Concord wireless capabilities by up to 16 zones
- 60-764-95R-32Z:**
- Adds or extends Concord wireless capabilities by up to 32 zones
- 60-764-95R-76Z:**
- Adds or extends Concord wireless capabilities by up to 76 zones

Specifications

- 8-15 VDC at 30 mA maximum power required
- 32 to 120 °F operating temperature
- Belgian gray
- 5.25" wide x 4.125" high x 1" deep, excluding antennas

Accessories

60-793 Concord Expansion Module (holds up to six single-sized SuperBus modules)

CPU Expansion Cards

60-755
Power Line Carrier (X-10) Card

- Allows use of Supervised Wireless Sirens (SWIS)
- Allows use of X-10 Modules for light control and light activation during alarms
- Attaches directly to the CPU circuit board

- 5 and 12 VDC input @ 110 mA nominal current
 - 10 to 120 °F operating temperature
 - 2.95" wide x 1.95" high x 0.875" deep
- See sensors for X-10 devices and SWIS.



60-756
4-Zone Input/2 Form-C Relay Output SnapCard

60-757
8-Zone Input SnapCard

- Attaches to the CPU circuit board Snapcard connection port
 - Includes one 12V two-wire smoke detector loop (provides 100 mA of power to Style B smoke detectors)
 - Provides three supervised UL Fire-rated hardwire loops
 - Includes two "Form C" contact relays controlled by a touchpad or a combination of states and system events
 - End-of-line supervision with 2K ohm resistor
- 60-756:**
- Power source 12 VDC @ 185 mA maximum
 - 40 to 120 °F operating temperature
 - 70% maximum relative humidity, noncondensing
 - 5.25" wide x 2" high x 0.75" deep
- 60-757:**
- Power source 12 VDC at 120 mA maximum
- 60-757:**
- Includes two 12V two-wire smoke detector loop (provides 100 mA of power to Style B smoke detectors)
 - Provides six supervised UL Fire-rated hardwire loops

SuperBus Expansion Modules



60-777
Phone Control and Voice Module

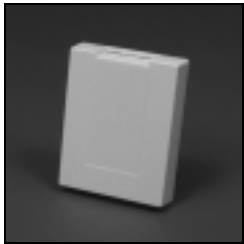
Description/Features

- Attaches to the CPU circuit board using the four-wire Superbus connection terminals
- Adds on-site and remote system control and from any touchtone phone
- An on-board digital-voice chip delivers system status messages over external speakers
- Voice chip includes more than 220-word vocabulary
- One module may be used to control a single or multiple partition Concord system
- In a multiple-partition system, each partition may use its own module connected to a separate phone line
- User-adjustable status speaker volume control
- On/off hook status sensing
- Ring detection
- DTMF decoding
- Local telephone power supply provides phone power during line-seize mode of operation
- Mounts on wall or in panel enclosure

Specifications

- Power source 10-12 VDC at 600 mA maximum
- 40 to 100 °F operating temperature
- 70% maximum relative humidity, non-condensing
- Belgian gray
- 8" wide x 5.5" high x 1.25" deep
- Phone Line REN: 0.4 Ringer Equivalence
- One module/panel communications LED
- FCC Parts 15 and 68 Certified
- UL985 for Household Fire warnings (pending)
- UL 1023 for Household Burglar Alarms
- NFPA 72 for National Fire Alarm Code

Accessories

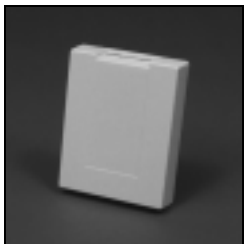


60-584
SuperBus Hardwire Input Module

- Provides up to eight additional hardwire zones
- Hardwire sensors can be configured N/O or N/C
- All zones supervised for open/short using 4.7K Ohm EOL resistor
- Module cover tamper protection option
- Built-in LED indicates proper communication to control panel
- Up to 8 modules per panel

- 12 VDC @ 18 mA max current draw
- 8 inputs configure N/O or N/C
- EOL supervision on each zone with 4.7K Ohm resistor
- 200 mA, 250 VAC fuse
- 32 to 120 °F operating temperature
- Belgian gray
- Tamper protection option
- Wall mounting
- 4.125" wide x 5.25" high x 1.0" deep

33-017 200 mA, 250 VAC Fuse 5/pk



60-585
SuperBus Hardwire Output Module

- Provides up to four additional hardwire outputs for home automation and security applications
- "Form C" relays can be configured N/O or N/C
- Module cover tamper protection option
- Built-in LED indicates proper communication to control panel
- Up to 8 modules per panel

- 12 VDC @ 11 mA typical (idle) or 91 mA max (all relays energized) current draw
- 4 outputs configure N/O or N/C
- 32 to 120 °F operating temperature
- Belgian gray
- Tamper protection option
- Wall mounting
- 4.125" wide x 5.25" high x 1.0" deep

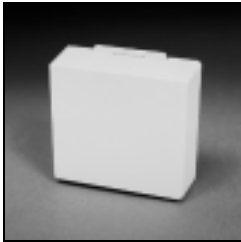
33-017 200 mA, 250 VAC Fuse 5/pk

**SuperBus Expansion
Modules—Continued**

Description/Features

Specifications

Accessories



60-620
SuperBus Energy Saver Module

- Provides a money-saving and convenient way to monitor and control the premises heating and cooling temperature
- Saves energy by overriding HVAC thermostat when user is gone
- User controls temperature limits for day and nighttime HVAC thermostat control
- Calibrates to premises thermostat
- Built-in freeze sensor activates furnace and alarm signal when the air temperature falls to 45 °F or to the programmed temperature
- Built-in LED indicates proper communication to control panel
- 12 VDC @ 20 mA max current draw
- Built-in freeze sensor activates at 45 °F (±6 °F)
- 22-gauge stranded wire
- 42 to 95 °F operating temperature
- Belgian gray
- Wall mounting next to thermostat
- 2.60" wide x 2.60" high x .90" deep



60-677
Interrogator 200 Audio Verification Module

- Gives the central station operator the ability to hear what is happening during an alarm and speak directly to the people on the premises
- Auto Gain Control circuitry means microphone requires no adjustments
- Up to 2 modules per control panel
- 12 VDC @ 10 mA max current draw
- 18-gauge stranded wire between speaker and control panel
- 22-gauge stranded wire for all other wire runs
- 40 to 100 °F operating temperature
- Belgian gray
- Recessed or surface mounting
- 6.9" wide x 4.9" high x 2.5" deep

Hardwire Touchpads

Description/Features

Specifications

Accessories



60-746-01
SuperBus 2000 2x16 LCD Touchpad

- Provides complete on-site programming and operational control of the system
- 2 line, 16 character LCD
- Built-in speaker sounds alarm, status sounds, and button-press beeps
- Panic buttons for police, fire, and auxiliary emergencies
- Quick Guide slides out of touchpad to provide basic system instructions
- Auto learn
- 12 VDC nominal (8 - 15.4 VDC), 90 mA (maximum)
- 40 to 100 °F operating temperature
- Maximum Humidity: 70% relative, noncondensing
- White
- Wall mounting
- 4.5" wide x 5.0" high x .92" deep



60-728
SuperBus LED Touchpad

- Provides operational control of the system
- 15 LEDs for easy visual system status
- 8 individual zone LEDs
- STAY, AWAY, and NO DELAY LEDs show system status
- *Enter Code* LED flashes to let user know when to enter their access code
- Quick Guide slides out of touchpad to provide basic system instructions
- 12 VDC nominal (8 - 14 VDC), 65 mA (maximum)
- 40 to 100 °F operating temperature
- Maximum Humidity: 70% relative, noncondensing
- White
- Wall mounting
- 4.5" wide x 5.0" high x .92" deep



60-803-04
SuperBus 2000 2-line 2x20 LCD Touchpad

- Provides complete on-site programming and operational control of the system
- 2 line, 20 character LCD
- Built-in speaker sounds alarm, status sounds, and button-press beeps
- Panic buttons for police, fire, and auxiliary emergencies
- 12 VDC nominal (8 - 15.4 VDC), 115 mA (maximum)
- 40 to 100 °F operating temperature
- Maximum Humidity: 70% relative, noncondensing
- Belgian Grey
- 8.44" wide x 5.0" high x 1.25" deep.

60-804-04:

- 2 line, 20 character VFD
- 12 VDC nominal (8 - 15.4 VDC), 120 mA (maximum)

60-804-04:

60-804-04
SuperBus 2000 2-line 2x20 VFD Touchpad

Wireless
Touchpads

Description/Features

Specifications

Accessories



60-694-95R
5-Button SAW Keychain Touchpad
60-659-95R
4-Button SAW Keychain Touchpad

- Recessed buttons help prevent false alarms
- LED confirms RF transmissions
- 60-694-95R:
 - Single button panic control
 - Provides convenient operational control of the system
- Recessed buttons help prevent false alarms
- Green LED confirms button presses
- Light control capability (60-606-319.5 only)
- 12 VDC, 33 mAh alkaline battery included
- 5-8 year battery life
- 10 to 120 °F operating temperature
- Black
- Keychain mounting (keychain ring included)
- 1.4" wide x 2.25" high x 0.38" deep

60-711 12V 33 mAh Alkaline Battery



60-606-319.5
4-Button Keychain Touchpad
60-607-319.5
2-Button Keychain Touchpad

- Provides convenient operational control of the system
- Recessed buttons help prevent false alarms
- Green LED confirms RF transmissions
- Light control capability (60-606-319.5 only)
- 12 VDC, 33 mAh alkaline battery included
- 5-8 year battery life
- 10 to 120 °F operating temperature
- Black
- Keychain mounting (keychain ring included)
- 1.4" wide x 2.25" high x 0.38" deep

34-034 12V 33 mAh Alkaline Battery
466-1050 4-Button Keychain Touchpad Specification Sheet 50/pk
466-1072 2-Button Keychain Touchpad Specification Sheet 50/pk



60-597-95
HiTech Hand Held Wireless Touchpad

- Provides portable operational control of the system
- Includes police, fire, and auxiliary panic buttons
- Light control capability
- Bypass capability
- Optional supervision reporting
- Can be wall mounted
- Quick arm
- Red/Green key press indicator light
- Convenient size and attractive styling
- 3 VDC LMN02 2/3 A button top battery (included)
- 5-8 year battery life
- Supervisory report every 64 minutes
- 10 to 120 °F operating temperature
- Belgian gray
- Portable or wall mounting (bracket included)
- 2.1" wide x 6.1" high x .86" deep

60-733 3 VDC LMN02 2/3 A Button Top Battery
444-1252 HiTech Hand Held Wireless Touchpad Mounting Bracket



60-348-10-95
Hand Held Wireless Touchpad

- Provides portable operational control of the system
- Includes police panic button
- Light control capability
- Bypass capability
- Optional supervision reporting
- Can be wall mounted
- Quick arm
- 3.5 VDC 1/2 AA lithium battery (included)
- 5-8 year battery life
- Supervisory report every 64 minutes
- 10 to 120 °F operating temperature
- Belgian gray
- Portable or wall mounting (bracket included)
- 2.56" wide x 2" high x .94" deep

34-026 3.5 VDC 1/2 AA Lithium Battery

Concord Commercial System Configuration

To configure a Concord Commercial Security System, start by selecting the control panel components listed on pages 10 through 14.

Control Panel



60-801
Concord Commercial Hybrid
Control Panel

Description/Features

- Provides commercial security and business automation system control
- 8 built-in hardwire zones (76 total zones with optional expansion cards)
- 2 partitions
- 60 user access codes
- Controls lights and appliances on a time schedule, individually, or in groups (using optional Line Carrier Card)
- 2-wire smoke detector compatibility
- U.L. commercial listing UL 1610
- Lock set included

Specifications

- Tamper resistant enclosure
- 24 VAC, 30 or 50 VA, 60 Hz transformer
- 12 VDC, 4 Ah, or 7 Ah rechargeable, sealed, lead-acid backup battery
- Regulated, current limited, fused 12 VDC output
- 15-minute battery test under load every 24 hours
- Belgian gray, wall-mount, steel enclosure
- 40 to 100 °F operating temperature
- 12.25" wide x 12.25" high x 3" deep

Accessories

- 60-791** Installation Programming Cable (connects LCD touchpad to panel for on-site programming)
- 60-793** Concord Expansion Module (holds up to six single-sized SuperBus modules)
- 60-817** Concord Commercial Bus Module Mounting Kit

Power



- 60-761**
24 VAC, 25 VA Class II Transformer
- 60-762**
24 VAC, 25 VA Class II Line Carrier Transformer - 1 Amp
- 60-778**
24 VAC, 50 VA Class II Transformer
- 60-779**
24 VAC, 50 VA Class II Line Carrier Transformer - 2.0 Amp

- Provides primary power to the control panel
- 60-762, 60-778, 60-779:**
- 60-762:**
- Required for X-10 devices and supervised wireless siren (SWIS)
- Must add 60-755 Power Line Carrier Card
- 60-762 and 779 for X-10

- 24 VAC power supply
- 120 VAC @ 60 Hz power requirement
- 32 to 110 °F operating temperature
- Black
- 2.25" wide x 3.5" high x 1.75" deep

- 60-755** Power Line Carrier Card

SuperBus Radio Receivers



60-764-95R-16Z
16-zone SuperBus Radio Receiver

60-764-95R-32Z
32-zone SuperBus Radio Receiver

60-764-95R-MAX
76-zone SuperBus Radio Receiver

Description/Features

- Mounts in Concord panel or can be located up to 2,800 feet away
 - Receives signals from wireless sensors and touchpads then to the panel through the SuperBus digital data bus
 - Spatial diversity
 - Built-in tamper protection sounds an alarm if tampered with
 - Compatible with all ITI 319.5 MHz (crystal or SAW Learn Mode wireless sensors and touchpads)
 - Adds or extends Concord wireless capabilities by up to 16 zones
- 60-764-95R-32Z:**
- Adds or extends Concord wireless capabilities by up to 32 zones
- 60-764-95R-76Z:**
- Adds or extends Concord wireless capabilities by up to 76 zones

Specifications

- 8-15 VDC at 30 ma maximum power required
- 32° to 120 °F operating temperature
- Belgian gray
- 5.25" wide x 4.125" high x 1" deep, excluding antennas

Accessories

60-793 Concord Expansion Module (holds up to six single-sized SuperBus modules)

CPU Expansion Cards

60-755
Power Line Carrier (X-10) Card

- Allows use of Supervised Wireless Sirens (SWIS)
- Allows use of X-10 Modules for light control and light activation during alarms
- Attaches directly to the CPU circuit board
- 5 and 12 VDC input @ 110 mA nominal current
- 10 to 120 °F operating temperature
- 2.95" wide x 1.95" high x 0.875" deep

See sensors for X-10 devices and SWIS.



60-756
4-Zone Input/2 Form-C Relay Output SnapCard

60-757
8-Zone Input SnapCard

- Attaches to the CPU circuit board Snapcard connection port
 - Includes one 12V two-wire smoke detector loop (provides 100 mA of power to Style B smoke detectors)
 - Provides three supervised UL Fire-rated hardwire loops
 - Provides false alarm prevention
 - Includes two "Form C" contact relays controlled by a touchpad or a combination of states and system events
 - End-of-line supervision with 2K ohm resistor
 - Power source 12 VDC at 185 mA maximum
 - 40 to 120 °F operating temperature
 - 70% maximum relative humidity, non-condensing
 - 5.25" wide x 2" high x 0.75" deep
- 60-757:**
- Power source 12 VDC at 120 mA maximum
 - Includes two 12V two-wire smoke detector loop (provides 100 mA of power to Style B smoke detectors)
 - Provides six supervised UL Fire-rated hardwire loops

SuperBus Expansion
Cards



60-777
Phone Control and Voice Module

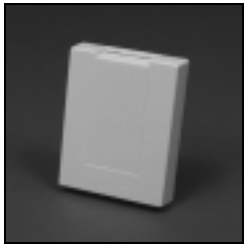
Description/Features

- Attaches to the CPU circuit board using the four-wire Superbus connection terminals
- Adds on-site and remote system control and from any touchtone phone
- An on-board digital-voice chip delivers system status messages over external speakers
- Voice chip includes more than 220 vocabulary
- One module may be used to control a single or multiple partition Concord system
- In a multiple-partition system, each partition may use its own module connected to a separate phone line
- User-adjustable status speaker volume control
- On/off hook status sensing
- Ring detection
- DTMF decoding
- Local telephone power supply provides phone power during line-seize mode of operation
- Mounts on wall or in panel enclosure

Specifications

- Power source 10-12 VDC at 600 mA maximum
- 40 to 100 °F operating temperature
- 70% maximum relative humidity, non-condensing
- Belgian gray
- 8" wide x 5.5" high x 1.25" deep
- Phone Line REN: 0.4 Ringer Equivalence
- One module/panel communications LED
- FCC Parts 15 and 68 Certified
- UL985 for Household Fire warnings (pending)
- UL 1023 for Household Burglar Alarms (pending)
- NFPA 72 for National Fire Alarm Code (pending)

Accessories

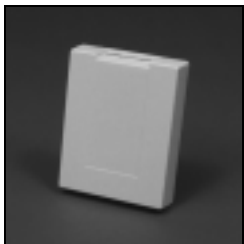


60-584
SuperBus Hardwire Input Module

- Provides up to eight additional hardwire zones
- Hardwire sensors can be configured N/O or N/C
- All zones supervised for open/short using 4.7K Ohm EOL resistor
- Module cover tamper protection option
- Built-in LED indicates proper communication to control panel
- Up to 8 modules per panel

- 12 VDC @ 18 mA max current draw
- 8 inputs configure N/O or N/C
- EOL supervision on each zone with 4.7K Ohm resistor
- 200 mA, 250 VAC fuse
- 32 to 120 °F operating temperature
- Belgian gray
- Tamper protection option
- Wall mounting
- 4.125" wide x 5.25" high x 1.0" deep

33-017 200 mA, 250 VAC Fuse 5/pk



60-585
SuperBus Hardwire Output Module

- Provides up to four additional hardwire outputs for home automation and security applications
- "Form C" relays can be configured N/O or N/C
- Module cover tamper protection option
- Built-in LED indicates proper communication to control panel
- Up to 8 modules per panel

- 12 VDC @ 11 mA typical (idle) or 91 mA max (all relays energized) current draw
- 4 outputs configure N/O or N/C
- 32 to 120 °F operating temperature
- Belgian gray
- Tamper protection option
- Wall mounting
- 4.125" wide x 5.25" high x 1.0" deep

33-017 200 mA, 250 VAC Fuse 5/pk

SuperBus Expansion Cards—Continued



60-677
Interrogator 200 Audio Verification Module

Description/Features

- Gives the central station operator the ability to hear what is happening during an alarm and speak directly to the people on the premises
- Auto Gain Control circuitry means microphone requires no adjustments
- Up to 2 modules per control panel

Specifications

- 12 VDC @ 10 mA max current draw
- 18-gauge stranded wire between speaker and control panel
- 22-gauge stranded wire for all other wire runs
- 40 to 100 °F operating temperature
- Belgian gray
- Recessed or surface mounting
- 6.9" wide x 4.9" high x 2.5" deep

Accessories

Hardwire Touchpads



60-746
SuperBus 2x16 LCD Touchpad

Description/Features

- Provides complete on-site programming and operational control of the system
- 2 line, 16 character LCD
- Built-in speaker sounds alarm, status sounds, and button-press beeps
- Panic buttons for police, fire, and auxiliary emergencies
- Quick Guide slides out of touchpad to provide basic system instructions

Specifications

- 12 VDC nominal (8 - 15.4 VDC), 90 mA (maximum)
- 40 to 100 °F operating temperature
- Maximum Humidity: 70% relative, noncondensing
- Belgian gray
- Wall mounting
- 4.5" wide x 5.0" high x .92" deep

Accessories



60-728
SuperBus LED Touchpad

- Provides operational control of the system
- 15 LEDs for easy visual system status
- 8 individual zone LEDs
- STAY, AWAY, and NO DELAY LEDs show system status
- *Enter Code* LED flashes to let user know when to enter their access code
- Quick Guide slides out of touchpad to provide basic system instructions

- 12 VDC nominal (8 - 14 VDC), 65 mA (maximum)
- 40 to 100 °F operating temperature
- Maximum Humidity: 70% relative, noncondensing
- Belgian gray
- Wall mounting
- 4.5" wide x 5.0" high x .92" deep



60-803-04
SuperBus 2000 2-line 2x20 LCD Touchpad

- Provides complete on-site programming and operational control of the system
- 2 line, 20 character LCD
- Built-in speaker sounds alarm, status sounds, and button-press beeps
- Panic buttons for police, fire, and auxiliary emergencies
- Quick Guide slides out of touchpad to provide basic system instructions

- 12 VDC nominal (8 - 15.4 VDC), 115 mA (maximum)
- 40 to 100 °F operating temperature
- Maximum Humidity: 70% relative, noncondensing
- Belgian Grey
- 8.44" wide x 5.0" high x 1.25" deep.

60-804-04:

- 12 VDC nominal (8 - 15.4 VDC), 90 mA (maximum)

60-804-04
SuperBus 2000 2-line 2x20 VFD Touchpad

- 2 line, 20 character VFD

Wireless
Touchpads

Description/Features

Specifications

Accessories



60-694-95R
5-Button SAW Keychain Touchpad
60-659-95R
4-Button SAW Keychain Touchpad

- Recessed buttons help prevent false alarms
- LED confirms RF transmissions
- 60-694-95R:**
- Single button panic control
- Provides convenient operational control of the system
- Recessed buttons help prevent false alarms
- Green LED confirms button presses
- Light control capability (60-606-319.5 only)¹
- 12 VDC, 33 mAh alkaline battery included
- 5-8 year battery life
- 10 to 120 °F operating temperature
- Black
- Keychain mounting (keychain ring included)
- 1.4" wide x 2.25" high x 0.38" deep

60-711 12V 33 mAh Alkaline Battery



60-606-319.5
4-Button Keychain Touchpad
60-607-319.5
2-Button Keychain Touchpad

- Provides convenient operational control of the system
- Recessed buttons help prevent false alarms
- Green LED confirms button presses
- Light control capability (60-606-319.5 only)
- 12 VDC, 33 mAh alkaline battery included
- 5-8 year battery life
- 10 to 120 °F operating temperature
- Black
- Keychain mounting (keychain ring included)
- 1.4" wide x 2.25" high x 0.38" deep

34-034 12V 33 mAh Alkaline Battery
466-1050 4-Button Keychain Touchpad Specification Sheet 50/pk
466-1072 2-Button Keychain Touchpad Specification Sheet 50/pk



60-597-95
HiTech Hand Held Wireless Touchpad

- Provides portable operational control of the system
- Includes police, fire, and auxiliary panic buttons
- Light control capability
- Status report control
- Bypass capability
- Optional supervision reporting
- Can be wall mounted
- Quick arm
- Red/Green key press indicator light
- Convenient size and attractive styling
- 3 VDC LMN02 2/3 A button top battery (included)
- 5-8 year battery life
- Supervisory report every 64 minutes
- 10 to 120 °F operating temperature
- Belgian gray
- Portable or wall mounting (bracket included)
- 2.1" wide x 6.1" high x .86" deep

60-733 3 VDC LMN02 2/3 A Button Top Battery
444-1252 HiTech Hand Held Wireless Touchpad Mounting Bracket



60-348-10-95
Hand Held Wireless Touchpad

- Provides portable operational control of the system
- Includes police panic button
- Light control capability
- Status report control
- Bypass capability
- Optional supervision reporting
- Can be wall mounted
- Quick arm
- 3.5 VDC 1/2 AA lithium battery (included)
- 5-8 year battery life
- Supervisory report every 64 minutes
- 10 to 120 °F operating temperature
- Belgian gray
- Portable or wall mounting (bracket included)
- 2.56" wide x 2" high x .94" deep

34-026 3.5 VDC 1/2 AA Lithium Battery

Wireless Interior Sirens



60-736-95
Supervised Wireless Interior Siren (SWIS)

Description/Features

- Produces low volume status beeps and full volume alarm sounds without any wiring
- Plugs into any 120 VAC wall outlet
- Receives signals from the control panel over AC power lines
- 3 status sound settings
- Low-battery warning
- Status sounds can be turned off
- U.L. approved
- Rechargeable backup battery included

Specifications

- 85 dB siren output at 10 feet
- 120V AC powered
- 3.6 VDC NiCd battery pack included
- Belgian Grey
- 4.3" wide x 3.4" high x 1.5" deep

Accessories

Hardwire Sirens



60-278
Hardwire Interior Siren and Piezo

- Produces both low volume status sounds and high volume siren sounds with voice alarm messages, using PIU
- Includes a speaker and piezo
- Interior voice speaker annunciates all voice messages and alarms
- Piezo activates for status and alarm sounds
- Good for areas where system status and siren sounds need to be heard
- 20W speaker output
- 12 VDC @ 5 mA max current draw
- 6-12 VDC @ 120 mA operating voltage
- 10 to 120 °F operating temperature
- Belgian gray
- Recessed or surface mounting
- 6 11/16" wide x 4 3/4" high x 2 3/8" deep



13-374
LD 105 Hardwire Interior Piezo Siren

- Produces low volume status beeps and full volume alarm sounds
- Small size with maximum output of 85 dB
- 85 dB max siren output
- 12 VDC @ 150 mA max current draw
- 4.5-15 VDC @ 75 mA operating voltage
- 42 to 95 °F operating temperature
- Belgian gray
- Wall mounting
- 2.8" wide x 4.8" high x 1.25" deep



60-483-01
Interior Slim Line Piezo Siren

- Produces low volume status beeps and full volume alarm sounds
- Small size provides clean installations
- 85 dB alarm siren output
- Separate piezo annunciator for low volume status beeps and alarm sounds
- 85 dB max siren output
- 12 VDC @ 30 mA max current draw
- 6-12 VDC @ 60 mA operating voltage
- 10 to 120 °F operating temperature
- Belgian gray
- Recessed mounting
- 2.5" wide x 6" high x 1.25" deep



60-683
Phone Jack Siren

- Produces low volume status beeps and full volume alarm sounds without running any wires
- Uses existing phone line wiring
- Replaces an existing phone jack and provides a jack for a phone
- Can be used with any wireless or hardwire system supplying 6-12 VDC
- Status sounds can be turned off
- 85 dB max siren output
- 30 mA max current draw
- 6-12 VDC @ 60 mA operating voltage
- 10 to 120 °F operating temperature
- Belgian gray
- Wall mounting with back box or flush mounting with a single gang box
- 2.88" wide x 6" high x 1.83" deep

SIRENS AND SPEAKERS Concord Family

Hardwire Sirens— Continued



13-046
Hardwire Exterior Piezo Siren

Description/Features

- Produces full volume alarm sounds for large indoor and outdoor areas
- Weatherproof housing
- 115 dB alarm siren output
- Only 145 mA max current draw

Specifications

- 115 dB max siren output
- 12 VDC @ 145 mA max current draw
- 6-12 VDC @ 98 mA operating voltage
- 22-gauge stranded wire
- 10 to 120 °F operating temperature
- White
- Wall mounting
- 3.56" diameter x 3.25" deep

Accessories

Hardwire Speakers



13-453
Surface Mount Interior Speaker

- Produces both low volume status sounds and high volume siren sounds with voice alarm messages, using phone interface and voice module
- Interior voice speaker annunciates all voice messages and alarms
- Good for areas where system status and siren sounds need to be heard

- 15 W RMS
- 20 W peak
- 8 ohm
- Not investigated by UL
- Surface mounting



13-454
Recessed Mount Interior Speaker

- Produces both low volume status sounds and high volume siren sounds with voice alarm messages, using phone interface and voice module
- Interior voice speaker annunciates all voice messages and alarms
- Good for areas where system status and siren sounds need to be heard.

- 15 W RMS
- 20 W peak
- 8 ohm
- Not investigated by UL
- Recessed mounting



60-252
Interior Speaker and Piezo

- Produces both low volume status sounds and high volume siren sounds with voice alarm messages, using phone interface and voice module
- Includes a speaker and piezo
- Interior voice speaker annunciates all voice messages and alarms
- Good for areas where system status and siren sounds need to be heard

- 20 W speaker output
- 12 VDC @ 5 mA max current draw
- 6-12 VDC @ 120 mA operating voltage
- 10 to 120 °F operating temperature
- Belgian gray
- Recessed or surface mounting
- 6 11/16" wide x 4 3/4" high x 2 3/8" deep

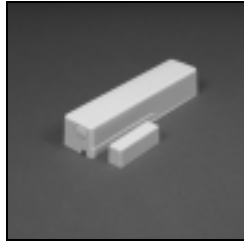


13-060
RMS Exterior Horn, 15 Watt Speaker

- Produces alarm and status voice messages or alarm messages only
- Good for large indoor and outdoor areas where voice feedback is needed
- Status and alarm messages
- UL approved, 85 dBA

- 22-gauge stranded wire
- 10 to 120 °F operating temperature
- White
- Wall mounting
- 13-060:**
 - 15 W, 8 Ohm speaker output
 - 5 1/8" diameter x 5 7/8" deep
- 13-061:**
 - 30 W, 8 Ohm speaker output
 - 8" diameter x 9 1/8" deep

SAW Sensors



60-670-95R
Belgian Gray Door/Window Sensor
60-670-11-95R
Brown Door/Window Sensor

- | | |
|--|--|
| <ul style="list-style-type: none"> ■ Protects anything that opens and closes, such as doors, windows, jewelry cases, and gun cabinets ■ For low and average traffic areas ■ Terminal block for hardwire contacts can be added to the built-in terminal post | <ul style="list-style-type: none"> ■ Two 1.5 VDC AAA alkaline batteries ■ 4-6 year battery life ■ 1 internal reed switch ■ 1 built-in terminal post ■ 10 to 120 °F operating temperature ■ Supervisory report every 64 minutes ■ Belgian gray ■ Flat surface mounting ■ 1.13" wide x 4.25" high x .88" deep |
|--|--|

- 60-710** 1.5 VDC AAA Alkaline Battery 6/pk
60-714 SAW Door/Window Sensor Terminal Block 10/pk
60-715 Belgian Gray Door/Window Sensor Spacer 25/pk
60-715-11 Brown Door/Window Sensor Spacer 25/pk
60-716 Belgian Gray Door/Window Sensor
60-716-11 Brown Door/Window Sensor Magnet Spacer 20/pk



60-639-95R
Indoor PIR Motion Sensor
60-807-95R
Indoor PIR Pet Immune Motion Sensor

- | | |
|--|--|
| <ul style="list-style-type: none"> ■ Passive infrared detection ■ Detects movement inside an enclosed structure ■ Use in large rooms, narrow corridors, and stairwells ■ 3-minute motion lockout to conserve battery life ■ Two sensitivity settings ■ Small and unobtrusive | <ul style="list-style-type: none"> ■ Two 1.5 VDC AA alkaline batteries ■ 3-4 year battery life ■ 32 to 120 °F operating temperature ■ Tamper switch ■ Supervisory report every 64 minutes ■ Belgian gray ■ Wall mounting ■ 2.5" wide x 3" high x 2" deep |
|--|--|

- 60-639-95R:**
- Provides the best overall human detection
 - Optional Animal Alley Lens
 - Mounting kit included to adjust coverage pattern
- 60-807-95R:**
- Pet Immunity up to 40 pounds
 - Excellent vertical vs. horizontal pattern recognition

- 60-600** 1.5 VDC AA alkaline battery
60-639-95R:
13-381 Fresnel Animal Alley Lens
60-737 Swivel mount



60-639-95R-OD
Outdoor PIR Motion Sensor

- | | |
|---|---|
| <ul style="list-style-type: none"> ■ Use for chime notification of movement outside the premises or to turn on an exterior light upon approach* ■ Use in driveways, walkways, etc. ■ Passive infrared detection ■ 3-minute motion lockout to conserve battery life <p>* This sensor is not intended for intrusion detection. Do not use this sensor in a police, panic, or fire sensor group.</p> | <ul style="list-style-type: none"> ■ Two 1.5 VDC AA alkaline batteries ■ 3-4 year battery life ■ 10 to 120 °F operating temperature ■ Tamper switch ■ Supervisory report every 64 minutes ■ Belgian gray ■ Wall mounting ■ 3" wide x 3" high x 3" deep (+1.25" with mounting bracket) |
|---|---|

- 60-600** 1.5 VDC AA Alkaline Battery



60-744-95R
Water Sensor

- | | |
|--|--|
| <ul style="list-style-type: none"> ■ Detects water leaks in home or business ■ Uses two parts: a detector wired to the transmitter | <ul style="list-style-type: none"> ■ Two 1.5 VDC AAA alkaline batteries ■ 3-5 year battery life ■ 10 to 120 °F operating temperature ■ Belgian gray ■ Flat surface mounting ■ Detector: 0.94" wide x 1.80" high x 0.50" deep ■ 1.13" wide x 4.25" high x 0.94" deep |
|--|--|

- 60-710** 1.5 VDC AAA Alkaline Battery

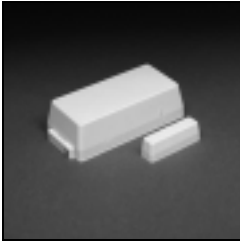
CRYSTAL INTRUSION SENSORS
Concord Family

Crystal Intrusion Sensors

Description/Features

Specifications

Accessories



60-362-10-319.5
Belgian Gray Door/Window Sensor
60-362-11-319.5
Brown Door/Window Sensor

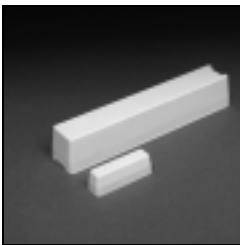
- Protects anything that opens and closes, such as doors, windows, jewelry cases, and gun cabinets
- Installs on anything that opens or closes
- For low and average traffic areas
- Built-in terminal strip for connecting hardwire contacts
- 2 internal reed switches allow for vertical or horizontal mounting
- 3.5 VDC ½ AA lithium battery
- 5-8 year battery life
- 2 internal reed switches
- 1.56" wide x 3.25" high x .88" deep
- 10 to 120 °F operating temperature
- Tamper switch
- Supervisory report every 64 minutes
- Belgian gray or brown
- Flat surface mounting

- 34-026 3.5 VDC ½ AA Lithium Battery
- 60-189 Belgian Gray Sensor Spacers 20/pk
- 60-191 Brown Sensor Spacers 20/pk
- 60-188 Belgian Gray Magnet Spacers 25/pk
- 60-190 Brown Magnet Spacers 25/pk
- 60-260, 261 Sensor Cases 5/pk
- 60-555-10, 11 Magnets (includes plastic) 10/pk
- 466-1045 Door/Window Sensor Specification Sheet 50/pk



60-741-95
Micro Recessed Belgian Gray Door/Window Sensor
60-741-11-95
Micro Recessed Brown D/W Sensor

- Protects doors and windows where the sensor should be concealed
- Sensors are completely concealed when installed
- Lithium battery
- 3.5 VDC ½ AA lithium battery
- 12-16 year battery life
- Recessed mount in 5/8" hole
- Magnet can be mounted using 5/8" sleeve, or 1/2" hole
- Supervisory report every 64 minutes
- 10 to 120 °F operating temperature



60-499-10-319.5
Slim Line Belgian Gray Door/Window Sensor
60-499-11-319.5
Slim Line Brown D/W Sensor

- Protects anything that opens and closes where the sensor mounting area is limited, such as narrow casements and window frames
- Slim design fits on most windows.
- 3.5 VDC ½ AA lithium battery (send to ITI to replace)
- 5-8 year battery life
- 10 to 120 °F operating temperature
- Tamper switch
- Supervisory report every 64 minutes
- Belgian gray or brown
- Flat surface mounting
- .31" wide x 4.94" high x .88" deep

- 80-089-10 Belgian Gray Sensor Case 5/pk
- 80-089-11 Brown Sensor Case 5/pk



60-511-01-95
DS924i PIR Motion Sensor
60-511-02-95
DS924i Pet Immune PIR Motion Sensor

- Detects movement inside an enclosed structure
- Use in large rooms, narrow corridors, and stairwells
- Passive infrared detection
- 3 sensitivity settings
- Includes masking kit to adjust coverage pattern
- 3-minute motion lockout to conserve battery life
- Optional lenses to suit various installation needs
- 60-511-02-95:
 - Adds pet immunity up to 40 pounds
- 3.5 VDC ½ AA lithium battery
- 3-5 year battery life
- Standard 70° lens coverage is 35' x 40'
- 10 to 120 °F operating temperature
- Tamper switch
- Supervisory report every 64 minutes
- Belgian gray
- Wall mounting
- 2.75" wide x 4.38" high x 1.75" deep

- 34-026 3.5 VDC ½ AA Lithium Battery
- 13-286 DS924 70' Long Range Lens 3/pk
- 13-287 DS924 78° x 35' Pet Lens 3/pk
- 13-288 DS924 110° x 35' Wide Angle Lens 3/pk
- 13-318 DS924 35' Barrier Lens 3/pk
- 13-319 DS924 85° x 70' Dual Corridor Lens 3/pk
- 13-320 DS924 10° x 70' Long Range Pet Lens 3/pk
- 13-359 DS924 Mounting Bracket
- 466-1145 DS924i PIR Specification Sheet 50/pk

Crystal Intrusion Sensors—Continued



60-703-95
ITI Crystal PIR Motion Sensor

- | | |
|---|--|
| <ul style="list-style-type: none"> ■ Detects movement inside an enclosed structure ■ Use in large rooms, narrow corridors, and stairwells ■ Passive infrared detection ■ 3-minute motion lockout to conserve battery life ■ Optional pet lens ■ Two sensitivity settings ■ Mounting kit included to adjust coverage pattern ■ Small and unobtrusive | <ul style="list-style-type: none"> ■ Two 1.5 VDC AA alkaline batteries ■ 3-4 year battery life ■ 10 to 120 °F operating temperature ■ Tamper switch ■ Supervisory report every 64 minutes ■ Belgian gray ■ Wall mounting ■ 2.5" wide x 3" high x 2" deep |
|---|--|

- 60-600 1.5 VDC AA Alkaline Battery
- 13-381 Fresnel Animal Alley Lens



60-459-319.5
Sound Sensor

- | | |
|---|--|
| <ul style="list-style-type: none"> ■ Responds to frequencies generated by breaking glass ■ Installs in rooms with many windows or a large picture window ■ Detection coverage of 360° up to 15' away ■ Detects sound of breaking glass (including tempered glass) .06" - .25" thick ■ Sensitivity preset by manufacturer | <ul style="list-style-type: none"> ■ 3.5 VDC ½ AA lithium battery ■ 5-8 year battery life ■ Audio microphone ■ 10 to 120 °F operating temperature ■ Supervisory report every 64 minutes ■ Belgian gray ■ Wall or ceiling mounting ■ 4.38" diameter x 2" deep |
|---|--|

- 34-026 3.5 VDC ½ AA Lithium Battery
- 13-332 IntelliSense Sound Sensor Tester



60-834
FlexGuard® Dual Disturbance Sound Sensor

- | | |
|--|---|
| <ul style="list-style-type: none"> ■ Responds to frequencies generated by breaking glass ■ Installs in rooms with many windows or a large picture window ■ Detection coverage up to 25' away in any direction ■ Includes a flex and audio microphone ■ Adjustable flex sensitivity ■ Test LEDs for flex sensitivity and audio range settings ■ Uses two 3.5 VDC AA batteries or one 9 VDC battery ■ Replaces the Intellisense Sound Sensor (part number 60-582-10-319.5) | <ul style="list-style-type: none"> ■ Two 3.5 VDC AA lithium batteries (included) or one 9 VDC alkaline or lithium battery ■ 5-8 year battery life ■ 10 to 120 °F operating temperature ■ Tamper switch ■ Supervisory report every 64 minutes ■ Belgian gray ■ Wall or ceiling mounting ■ 4.13" wide x 4.75" high x 1.25" deep |
|--|---|

- 34-002 9 VDC Eveready® Energizer® Alkaline Battery - UL listed
- 34-011 9 VDC, 550 mAh, Duracell® Alkaline Battery - UL listed
- 34-037 9 VDC, 1.2 Ah, UltraLife® Lithium Battery - UL listed
- 60-619 3.5 VDC AA Lithium Battery 6/pk
- 13-332 IntelliSense Sound Sensor Tester



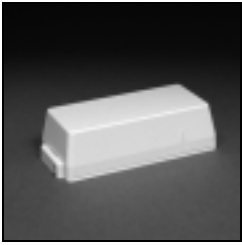
60-461-10-319.5
Belgian Gray Shock Sensor
60-461-10-319.5
Brown Shock Sensor

- | | |
|--|--|
| <ul style="list-style-type: none"> ■ Installs on windows to detect openings/closings and breaking glass or splintering wood ■ Detects breaking glass or splintering wood up to 5' away ■ Shock detector can be mounted inside or outside sensor case ■ 2 built-in reed switches allow for vertical or horizontal mounting to detect window openings/closings ■ Adjustable sensitivity | <ul style="list-style-type: none"> ■ 3.5 VDC ½ AA lithium battery ■ 5-8 year battery life ■ 10 to 120 °F operating temperature ■ Tamper switch ■ Supervisory report every 64 minutes ■ Belgian gray or brown ■ Window frame mounting ■ 1.56" wide x 4.88" high x .94" deep |
|--|--|

- 34-026 3.5 VDC ½ AA Lithium Battery
- 60-267 Belgian Gray Sensor Case 5/pk
- 80-006-10, 11 Belgian Gray, Brown Sensor Spacer 20/pk
- 13-005, 011 Belgian Gray, Brown Surface Mount Litton® Shock Detector SP3237
- 60-268 Brown Sensor Case 5/pk
- 13-214 Litton Shock Detector (fits inside case)
- 13-215 Belgian Gray Litton Recessed Mount Shock Detector

CRYSTAL INTRUSION SENSORS
Concord Family

Crystal Intrusion
Sensors—Continued



60-462-10-319.5
Belgian Gray Glass Break Sensor

60-462-11-319.5
Brown Glass Break Sensor

Description/Features

- Mounts directly onto glass in doors and windows, gun cabinets, etc., to detect breaking glass
- 5' sensitivity radius
- Adheres to glass being protected
- Can be mounted anywhere on glass, at least 1" from glass frame
- Built-in terminal strip for connecting hardwire contacts

Specifications

- 3.5 VDC 1/2 AA lithium battery
- 5-8 year battery life
- 10 to 120 °F operating temperature
- Tamper switch
- Supervisory report every 64 minutes
- Belgian gray or brown
- Glass mounting with adhesive pads (included)
- 1.5" wide x 3.25" high x .88" deep

Accessories

- 34-026 3.5 VDC ½ AA Lithium Battery
- 13-067 Glass Guard Adhesive Pad 50/pk



60-615-10-319.5
Quik Bridge™ Learn Mode Repeater

- Receives and retransmits signals from Learn Mode sensors, touchpads, and other Repeaters to increase the distance a sensor can be mounted from the control panel
- Ideal for large installations where:
 - distant sensors perform poorly on the sensor test;
 - distant sensors cause supervisory problems; or
 - control panel antennas are shielded by metal
- Dual-antenna receiver for improved sensor data reception
- 24-hour backup battery option
- On board backup battery charging circuit
- Low backup battery report option
- AC power failure option
- Supervisory reports every 64 minutes
- Tamper switch

- 600' typical open-air range
- Main power supplied by:
 - 15-16.5 VAC, 2 VA transformer (required if backup battery is used), or
 - 9-16.5 VAC, 2 VA transformer, or
 - 12 VDC power supply
 - 50 mA max current draw
 - 24-hour backup with 12 VDC, 1.3 Ah lead-acid battery
- 319.5 MHz radio receiver and sensor
- Crystal-controlled superheterodyne radio receiver
- 40 to 120 °F operating temperature
- Tamper switch
- AC power failure report
- Supervisory report every 64 minutes
- Belgian gray
- ABS Plastic
- Flat surface mounting
- 4.125" wide x 5.25" high (+8.75" with antennas) x 1" deep
- 5.1 oz.

Note:
A weatherproof case is available from Rose Enclosures (301-696-9800). Order part number 09122008-00.

Crystal Fire and Smoke
Sensors



60-506-319.5
System Sensor™ Smoke
Sensor 2100 RF
60-645-95
System Sensor™ Smoke
Sensor 2300 RF

Description/Features

- Produces an alarm and sends an alarm signal to the control panel when smoke is detected
 - Use in bedrooms, hallways, stairwells, etc.
 - Most suitable for detecting slow smoldering fires
 - Photoelectric smoke detector
 - Built-in siren
 - Built-in low battery annunciator
- 60-506:
- Two 9 VDC alkaline or lithium batteries
 - 1 year alkaline battery life
 - 2 year lithium battery life
- 60-645:
- Low battery signal sent to control panel 7 days prior to low battery chirp
 - Notifies user when sensor needs to be cleaned
 - Installer-serviceable chamber cleaning

Specifications

- 32 to 100 °F operating temperature
- Tamper switch
- Supervisory report every 64 minutes
- White
- Wall or ceiling mounting
- 5.5" diameter x 2.5" deep

Accessories

- 34-002 9 VDC Eveready Energizer Alkaline Battery - UL listed
- 34-011 9 VDC, 550 mAh, Duracell Alkaline Battery - UL listed
- 34-037 9 VDC, 1.2 Ah, UltraLife Lithium Battery - UL listed
- 34-030 3 VDC 2/3 A Lithium Battery



60-460-319.5
Rate-of-Rise Heat Sensor
60-460-319.5-LB
Rate-of-Rise Heat Sensor w/Lithium
Battery

- Responds to high temperatures or rapid temperature changes
- Use in kitchens, bathrooms, garages, etc.
- Provides detection in spaces up to 2,500 sq. ft.
- Activates when temperature increases 15 °F/minute or greater
- Fixed temperature sensor activates at 135 °F

- One 9 VDC alkaline or lithium battery
- 1 year alkaline battery life
- 2 year lithium battery life
- 40 to 100 °F operating temperature
- Tamper switch
- Supervisory report every 64 minutes
- Belgian gray
- Wall or ceiling mounting
- 4.5" diameter x 2.25" deep

- 34-002 9 VDC Eveready Energizer Alkaline Battery - UL listed
- 34-011 9 VDC, 550 mAh, Duracell Alkaline Battery - UL listed
- 34-037 9 VDC, 1.2 Ah, UltraLife Lithium Battery - UL listed



60-589-319.5
Fire Pull Station Sensor

- Allows a person to activate a fire alarm in the event of a fire
- Use in residential or commercial sites
- Manually activated
- Built-in transmitter
- Clear shield protects activation switch
- Easily resets with key

- 3.5 VDC ½ AA lithium battery
- 5-8 year battery life
- Manually activated
- Reset with key (included)
- 40 to 100 °F operating temperature
- Supervisory report every 64 minutes
- Red case
- Wall mounting
- 3.38" wide x 3.38" high x 1.88" deep

- 34-026 3.5 VDC ½ AA Lithium Battery

CRYSTAL ENVIRONMENTAL SENSORS
Concord Family

Crystal Environmental
Sensors



60-504-10-319.5
Freeze Sensor

Description/Features

- Detects furnace failure in residential or commercial sites by detecting when the air temperature falls below 45 °F
- Use in climates where temperatures can drop below 32 °F
- Monitors the temperature in an open area up to 900 sq. ft.
- Sends alarm signal to control panel when air temperature falls below 45 °F
- Sends restore signal to control panel when temperature increases to 55 to 60 °F

Specifications

- 3.5 VDC ½ AA lithium battery
- 5-8 year battery life
- 10 to 120 °F operating temperature
- Tamper switch
- Supervisory report every 64 minutes
- Belgian gray
- Flat surface mounting
- 1.56" wide x 4.88" high x .94" deep

Accessories

- 34-026 3.5 VDC ½ AA Lithium Battery
- 80-006-10 Belgian Gray Sensor Spacer 20/pk
- 80-006-11 Brown Sensor Spacer 20/pk



60-652-95
Carbon Monoxide Sensor

- Detects hazardous levels of carbon monoxide gas
- Internal siren sounds and red light comes on when dangerous levels of gas are present
- Transmits alarm signal to control panel when dangerous levels of gas are present
- Sensor adjusts response time to carbon monoxide levels present
- Green light indicates detector is functioning properly
- Plugs into standard outlet

Note:

Gases NOT detected: methane, butane, heptane, ethyl alcohol, isopropyl alcohol, carbon dioxide, and propane.

- 110 VAC @ 60 Hz, 7W power requirement
- 102-132 VAC operating voltage
- 2.5W average standby power
- 3.5 VDC ½ AA lithium battery for transmitter
- 5-8 year sensor battery life
- 85 dB @ 10' for 4 minutes minimum internal siren output
- Time and CO PPM present for alarm to sound:
 - <15 minutes @ 400 PPM
 - <35 minutes @ 200 PPM
 - <90 minutes @ 100 PPM
- 40 to 100 °F operating temperature
- Supervisory report every 64 minutes
- White case, green label
- 110 VAC grounded non-switched outlet mounting
- 6.5" wide x 3.5" high x 2.25" deep

- 34-026 3.5 VDC ½ AA Lithium Battery

X-10 Lighting and Appliance Control

Description/Features

Specifications

Accessories



13-079
X-10 Appliance Module

- 15 Amps, 1500W
- Communicates through existing AC wiring; no additional wiring needed
- Controls appliances such as fans, dehumidifiers, and stereos, using Concord scheduling capabilities
- Not for use with Concord Express
- 500W appliances
- 120 VAC @ 60 Hz power requirement



13-204
X-10 Powerhouse Series Lamp Module

- Provides system and user control of lamps (up to 300W)
- Communicates through existing AC wiring; no additional wiring needed
- Turns lights on during a fire or auxiliary alarm
- Blinks lights during police alarm
- Blinks lights to indicate arming level
- Turns lights on for 5 minutes when system is armed/disarmed
- For use with 300W max incandescent lights only
- 120 VAC @ 60 Hz power requirement
- White
- 2.25" wide x 2.75" high x 1.25" deep

13-403:

- Automatic gain control—more reliable.



13-399
Universal Relay Module

- Activates a relay for devices such as garage door openers, sprinklers, and curtains with a 4-Button Keychain Touchpad
- Built-in low volume siren
- Open/close command can be set for momentary or continuous open/close
- 120 VAC @ 60 Hz power requirement
- Provides isolated relay contacts to control devices rated up to 5A @ 24 VDC (100 VA @ 30 VAC)
- Rated for devices up to 30 VDC
- White
- 2.25" wide x 3.5" high x 1.75" deep



13-397
2-Way Wall Switch Module

- Automates indoor or outdoor lights, including: porch, patio, hallway, and stairway lights.
- 500W appliances
- 120 VAC @ 60 Hz power requirement

X-10 MODULES AND CENTRAL STATION MONITORING
Concord Family

Central Station
Monitoring



60-766
CS-5000 Central Station Receiver

Description/Features

- Provides control panel monitoring
- Monitors all ITI systems
- Monitors most communications formats
- Provides ITI and SIA (Security Industry Association) standard format
- Communication outputs for computer automation applications
- Built-in CRT
- 4 telephone line connections
- 3 RS-232 outputs
- Backup batteries

Specifications

- 110 VAC @ 60 Hz or 220 VAC @ 50 Hz operating voltage
- 12 VDC, 6.5 Ah lead acid backup battery (not included)
- Chassis: Rack mountable, anodized aluminum desktop chassis; "tool-less" front panel access to all changeable cards; holds up to 12 line cards
- 19" wide, 5.75" high, 11.5" deep
- Continuous call throughput from 12 line cards simultaneously receiving SIA DCS events at 300 baud
- Automatic line card interpretations of Modem, FSK/BFSK, Tone Burst, and DTMF formats
- 500 call minimum call history memory.
- Built-in test and diagnostics
- Includes one line card

Accessories

- 13-352 Okidata® Printer
- 13-227 Proxima® Surge Suppressor
- 13-248 12V, 6.5 Ah Backup Battery
- 60-417 Phone Line and Power Fault Annunciator Module
- 46-056 Installation and Operator's Guide
- 46-081 CS-5000 Full Color Brochure

Remote Programming
Software



60-675-WIN
ITI ToolBox 4.3 for Windows

- Software application that allows control panels to be programmed from a PC
- Uploads control panel information for new accounts
- Downloads control panel information for new installations
- Updates existing control panel programming
- Easy, menu-driven interface
- On-line help
- Stores database of control panel accounts on a PC hard disk
- Y2K Compliant

- Package includes:
 - Up to two 3.5" high density disks
 - User's Guide
 - On-line help
- Minimum system required:
 - Windows 3.1 or later
 - 386/25 MHz IBM® or compatible PC
 - Hayes™ or compatible modem
 - 8 MB free hard disk space

- 60-719 ToolBox Modem Kit

Hardwire Intrusion Contacts

Description/Features

13-430 Surface Mount 2" Gap, White	<ul style="list-style-type: none"> ■ Tane Model Number: SW-35WG ■ 2-inch gap
13-431 Surface Mount 2" Gap, Brown	<ul style="list-style-type: none"> ■ 10/pk ■ Surface mount
13-432 Surface Mount 1" Gap, White	<ul style="list-style-type: none"> ■ Tane Model Number: SW-32G ■ 1-inch gap
13-433 Surface Mount 1" Gap, Brown	<ul style="list-style-type: none"> ■ 10/pk ■ Surface mount
13-434 Rollerball Switch Contact, White	<ul style="list-style-type: none"> ■ Tane Model Number: RG-32 ■ 3/4-inch gap
13-435 Rollerball Switch Contact, Brown	<ul style="list-style-type: none"> ■ 10/pk
13-428 Mini Surface Contact w/Terminal and Adhesive Strip, White	<ul style="list-style-type: none"> ■ Tane Model Number: FM-106 ■ 1-inch gap minimum ■ 10/pk
13-429 Mini Surface Contact w/Terminal and Adhesive Strip, Brown	
13-436 Magnetic Recessed Contact, White	<ul style="list-style-type: none"> ■ Tane Model Number: STB-10 ■ .7-inch gap minimum
13-437 Rollerball Recessed Contact, Brown	<ul style="list-style-type: none"> ■ 10/pk

HARDWARE SENSORS
Concord Family

Hardwire Miscellaneous Detectors

Description/Features

Specifications

Accessories

13-438
 Overhead Garage Door Switch

- Tane Model Number: Met-44
- Quantity of 1

13-075
 Call Switch N/O 8-ft. Reed Switch

13-076
 Double Holdup Button N/O Reed Switch, White

13-066
 Sentrol 1005 Mini-Magna Pull N/C Reed Switch 10/pk, White

13-065
 Sentrol 1005 Mini-Magna Pull N/C Reed Switch 10/pk, Brown



- 10-foot protection on a single pane
- Easy to use, field proven 3M adhesion
- Detects all types of glass without adjustment
- Ideal for 24-hour loop protection

13-062
 Sentrol 5150 Glass Break Detector, White

13-063
 Sentrol 5150 Glass Break Detector, Brown



- Detects movement inside an enclosed structure
- Use in large rooms, narrow corridors, and stairwells
- Passive infrared detection
- Wide angle coverage (40 x 40 feet).
- Long range coverage (10 x 67 feet)
- 9-16 VDC input power
- 17 mA @ 12 VDC current draw
- -4 to 120 °F operating temperature

13-468
 Optex Pet Immune PIR



- Detects movement inside an enclosed structure
- Use in large rooms, narrow corridors, and stairwells
- Passive infrared detection
- Optional pet lens
- Two sensitivity settings
- Mounting kit included to adjust coverage pattern
- Small and unobtrusive
- 9-15 VDC input power
- 17 mA @ 12 VDC current draw
- -20 to 122 °F operating temperature
- Tamper switch
- Supervisory report every 64 minutes
- Belgian gray
- Wall mounting
- 2.25" wide x 3" high x 1.5" deep

13-464
 DS-940 Hardwire PIR

13-465
 DS-940P Pet Immune Hardwire PIR

13-440
 DS-835 Tri-Tech PIR/Microwave Motion Detector - Hardware

- Tri-Tech Model Number: DS835
- Microwave motion detector
- Quantity of 1
- Uses microwave passive infrared and built-in artificial intelligence for maximum pattern recognition

Sales, Print, and Video
Materials

Description/Features

Specifications

Accessories



80-347
Concord Express Demonstration Kit
80-332
Concord Demonstration Kit

- Provides an effective way to demonstrate Express to business and residential customers.
- Kit Includes:
 - Operational control panel
 - Fixed English LCD Touchpad
 - (2) 2-button keychain touchpads
 - Hardwire interior siren
 - SAW door/window sensor
 - ITI PIR motion detector housing
 - Water-resistant panic housing
 - Active hardwire contacts configured into the panel
- 80-332:
 - Operational control panel
 - Alphanumeric touchpad.
 - 2 door/window sensors.
 - Interrogator 200 Audio Verification Module.
 - 4-button keychain touchpad.
 - System Sensor Smoke Sensor.
 - Pendant Panic Sensor.
 - Plastic door/window sensors cases .
 - Black carrying case (19" wide x 14" high)



466-1731
Concord Product Line Overview
Specification

- Provides a easy-to-understand overview of the Concord Express, Concord, and Concord Commercial systems.
- Two color
- 8.5" high x 11" wide
- 8 pages
- 50/pk

466-1593
Concord End-User Brochure

- Provides an overview of Concord for business and residential customers.
- Four color
- Glossy
- 8.5" high x 11" wide
- 8 pages
- 50/pk



466-1593
Concord End-User Feature/Benefit Sheet

466-1611
Concord Express End-User
Feature/Benefit Sheet

466-1641
Concord Commercial End-User
Feature/Benefit Sheet

- Provides an overview of Concord for business and residential customers.
- Four color
- Glossy
- 8.5" high x 11" wide
- 8 pages
- 50/pk

Sales, Print, and Video
Materials

Description/Features

Specifications

Accessories

SALES, PRINT, AND VIDEO MATERIALS
Concord Family



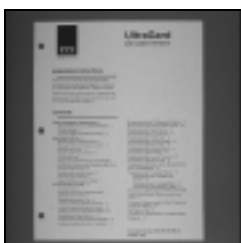
466-1504-SAW
SAW Wireless Sensor Brochure
466-1504-CRY
Crystal Wireless Sensor Brochure

- Provides an overview of some wireless SAW sensors available and their applications
- Four color
- Glossy
- 4" wide x 9" high (folded)
- 16 pages
- 25/pk



466-1513
Concord User's Guide
466-1594
Concord Owners Video
466-1667
Concord Express User's Guide
466-1743
Concord Express Owners Video

- User's Guides:**
- Provides complete operating instructions for the security system.
 - 3-hole punched
 - 8.5" wide x 11" high
 - One included with each panel.
- User's Videos:**
- Provides an overview and basic instructions for operating. One video is included with each panel.
 - 15 minutes
 - Full color
- 8.5" wide x 11" high
 - 3-hole drilled
 - Black and white



466-1512
Concord Installation Guide
466-1665
Concord Express Installation Guide

- Provides installation, setup, and programming procedures.
- 3-hole punched
- 8.5" wide x 11" high
- Available upon request

INDEX

by Product Part Number

- 13-046 Hardwire Exterior Piezo Siren 18
13-060 RMS Exterior Horn, 15 Watt Speaker 18
13-062 Sentrol 5150 Glass Break Detector, White 28
13-063 Sentrol 5150 Glass Break Detector, Brown 28
13-065 Sentrol 1005 Mini-Magna Pull N/C Reed Switch 10/pk, Brown 28
13-066 Sentrol 1005 Mini-Magna Pull N/C Reed Switch 10/pk, White 28
13-075 Call Switch N/O 8-ft. Reed Switch 28
13-076 Double Holdup Button N/O Reed Switch, White 28
13-079 X-10 Appliance Module 25
13-204 X-10 Powerhouse Series Lamp Module 25
13-374 LD 105 Hardwire Interior Piezo Siren 17
13-397 2-Way Wall Switch Module 25
13-399 Universal Relay Module 25
13-403 X-10 Pro Series Lamp Module 25
13-428 Mini Surface Contact w/Terminal and Adhesive Strip, White 27
13-429 Mini Surface Contact w/Terminal and Adhesive Strip, Brown 27
13-430 Surface Mount 2" Gap, White 27
13-431 Surface Mount 2" Gap, Brown 27
13-432 Surface Mount 1" Gap, White 27
13-433 Surface Mount 1" Gap, Brown 27
13-434 Rollerball Switch Contact, White 27
13-435 Rollerball Switch Contact, Brown 27
13-436 Magnetic Recessed Contact, White 27
13-437 Rollerball Recessed Contact, Brown 27
13-438 Overhead Garage Door Switch 28
13-440 DS-835 Tri-Tech PIR/Microwave Motion Detector - Hardware 28
13-453 Surface Mount Interior Speaker 18
13-454 Recessed Mount Interior Speaker 18
13-464 DS-940 Hardwire PIR 28
13-465 DS-940P Pet Immune Hardwire PIR 28
13-468 Optex Pet Immune PIR 28
466-1504-CRY Crystal Wireless Sensor Brochure 30
466-1504-SAW SAW Wireless Sensor Brochure 30
466-1512 Concord Installation Guide 30
466-1513 Concord User's Guide 30
466-1593 Concord End-User Brochure 29
466-1593 Concord End-User Feature/Benefit Sheet 29
466-1594 Concord Owners Video 30
466-1611 Concord Express End-User Feature/Benefit Sheet 29
466-1641 Concord Commercial End-User Feature/Benefit Sheet 29
466-1665 Concord Express Installation Guide 30
466-1667 Concord Express User's Guide 30
466-1731 Concord Product Line Overview Specification 29
466-1743 Concord Express Owners Video 30
60-252 Interior Speaker and Piezo 18
60-278 Hardwire Interior Siren and Piezo 17
60-348-10-95 Hand Held Wireless Touchpad 5, 11, 16
60-362-10-319.5 Belgian Gray Door/Window Sensor 20
60-362-11-319.5 Brown Door/Window Sensor 20
60-459-319.5 Sound Sensor 21
60-460-319.5 Rate-of-Rise Heat Sensor 23
60-460-319.5-LB Rate-of-Rise Heat Sensor w/Lithium Battery 23
60-461-10-319.5 Belgian Gray Shock Sensor 21
60-461-10-319.5 Brown Shock Sensor 21
60-462-10-319.5 Belgian Gray Glass Break Sensor 22
60-462-11-319.5 Brown Glass Break Sensor 22
60-483-01 Interior Slim Line Piezo Siren 17
60-499-10-319.5 Slim Line Belgian Gray Door/Window Sensor 20
60-499-11-319.5 Slim Line Brown D/W Sensor 20
60-504-10-319.5 Freeze Sensor 24
60-506-319.5 System Sensor™ Smoke Sensor 2100 RF 23
60-511-01-95 DS924i PIR Motion Sensor 20
60-511-02-95 DS924i Pet Immune PIR Motion Sensor 20
60-584 SuperBus Hardwire Input Module 8, 14
60-585 SuperBus Hardwire Output Module 8, 14
60-589-319.5 Fire Pull Station Sensor 23
60-597-95 HiTech Hand Held Wireless Touchpad 5, 11, 16
60-606-319.5 4-Button Keychain Touchpad 11, 16
60-607-319.5 2-Button Keychain Touchpad 5, 11, 16
60-607-319.5 4-Button Keychain Touchpad 5
60-615-10-319.5 Quik Bridge™ Learn Mode Repeater 22
60-620 SuperBus Energy Saver Module 9
60-639-95R Indoor PIR Motion Sensor 19
60-639-95R-OD Outdoor PIR Motion Sensor 19
60-645-95 System Sensor™ Smoke Sensor 2300 RF 23
60-652-95 Carbon Monoxide Sensor 24
60-659-319.5 4-Button SAW Keychain Touchpad 16
60-659-95R 4-Button SAW Keychain Touchpad 5, 11
60-670-1195R Brown Door/Window Sensor 19
60-670-95R Belgian Gray Door/Window Sensor 19
60-675-WIN ITI ToolBox 4.3 for Windows 26
60-677 Interrogator 200 Audio Verification Module 9, 15
60-680 12 VDC, 7.0 Ah Lead Acid Battery 6
60-681 12 VDC, 4.0 Ah Lead Acid Battery 3, 6
60-683 Phone Jack Siren 17
60-694-95R 5-Button SAW Keychain Touchpad 5, 11, 16
60-703-95 ITI Crystal PIR Motion Sensor 21
60-728 SuperBus LED Touchpad 10, 15
60-734 Concord Hybrid Control Panel 6
60-736-95 Supervised Wireless Interior Siren (SWIS) 17
60-741-11-95 Micro Recessed Brown D/W Sensor 20
60-741-95 Micro Recessed Belgian Gray Door/Window Sensor 20
60-744-95R Water Sensor 19
60-746 SuperBus 2000 2x16 LCD Touchpad 4
60-746 SuperBus 2x16 LCD Touchpad 15
60-746-01 SuperBus 2000 2x16 LCD Touchpad 10
60-755 Power Line Carrier (X-10) Card 7, 13
60-756 4-Zone Input/2 Form-C Relay Output SnapCard 4, 7, 13
60-757 8-Zone Input SnapCard 4, 7, 13
60-761 24 VAC, 25 VA Class II Transformer 6, 12
60-762 24 VAC, 25 VA Class II Line Carrier Transformer - 1 Amp 6, 12
60-764-95R-16Z 16-zone SuperBus Radio Receiver 7, 13
60-764-95R-32Z 32-zone SuperBus Radio Receiver 7, 13
60-764-95R-MAX 76-zone SuperBus Radio Receiver 7, 13

INDEX
by Product Part Number

60-766 CS-5000 Central Station Receiver 26
60-777 Phone Control and Voice Module 8, 14
60-778 24 VAC, 50 VA Class II Transformer 6, 12
60-779 24 VAC, 50 VA Class II Line Carrier Transformer - 2.0 Amp 12
60-779 24 VAC, 50 VA Class II Line Carrier Transformer - 2.5 Amp 6
60-792-95R-16Z Concord RF16 Integrated Panel 6
60-792-95R-32Z Concord RF32 Integrated Panel 6
60-801 Concord Commercial Hybrid Control Panel 12
60-803-04 SuperBus 2000 2-line 2x20 LCD Touchpad 4, 10, 15
60-804-04 SuperBus 2000 2-line 2x20 VFD Touchpad 4, 10, 15
60-806-95R Concord Express Control Panel 3
60-807-95R Indoor PIR Pet Immune Motion Sensor 19
60-820 SuperBus 2000 Fixed English LCD Touchpad 4
60-822 16.5 VAC, 25 VA Class II Transformer 3
60-832-95 2-Button Encrypted Keychain Touchpad 5
60-834 FlexGuard® Dual Disturbance Sound Sensor 21
80-332 Concord Demonstration Kit 29
80-347 Concord Express Demonstration Kit 29

Security
Automation
Fire Protection
Access Control



W I R E L E S S

Interactive Technologies, Inc.

2266 Second Street North
North Saint Paul, MN 55109-2900

T: 800/777-1415

F: 651/779-4890

WebSite: www.ititechnologies.com

©Interactive Technologies, Inc. December 1999

Specifications subject to change.

Some features are optional.

Document Number: 466-1242-CON