

GE
Supply

Security Products *PLUS* Security Know-how

“The one place for all the Security products I could ever need, *plus* know-how that gets it right the first time.”

Video



Access Control



Intrusion



Fire



Copyright Info:

The HID product images found on pages 1, 15 & 17 are courtesy of HID Corporation.

The Dell product images found on page 11 are courtesy of Dell Inc. © 2006 Dell Inc. All Rights Reserved.



Security offers a safe haven for reliable, profitable growth

Security is more critical than ever. Companies, governments, organizations and people know they need it. So they want leading-edge, reliable, cost-effective solutions to keep them safe. That translates into opportunities for prepared contractors, installers and specifiers – with more applications emerging every day in financial, health care, manufacturing, retail, government and corporate settings.

GE Supply can be your trusted security resource, with:

- Full breadth of Security products and accessories from leading, proven manufacturers
- Nationwide inventory availability to meet the fast-paced demands of this dynamic industry
- Dedicated Security Technical Specialists to help you uncover business opportunities and streamline installations
- Product training and unmatched support through the GE Supply Tech Center to keep you current on advances
- Project management expertise to anticipate and prevent potential problems and optimize solutions

Let GE Supply help you specify, design and deliver all the products and know-how you need for Security installation success. We have the resources, desire and commitment it takes to help grow your business and your profits. For more information: Contact your **local branch**, call **1-877-969-8030** or visit **www.gesupply.com**.

GE Supply can help you succeed with the latest technology and service advances in all four major security categories:

VIDEO:

See the newest ways to keep an eye on things – cameras and interfaces aren't what they used to be.

ACCESS CONTROL:

Be sure only the in-crowd actually gets in – smart systems can thwart even the fleet-footed.

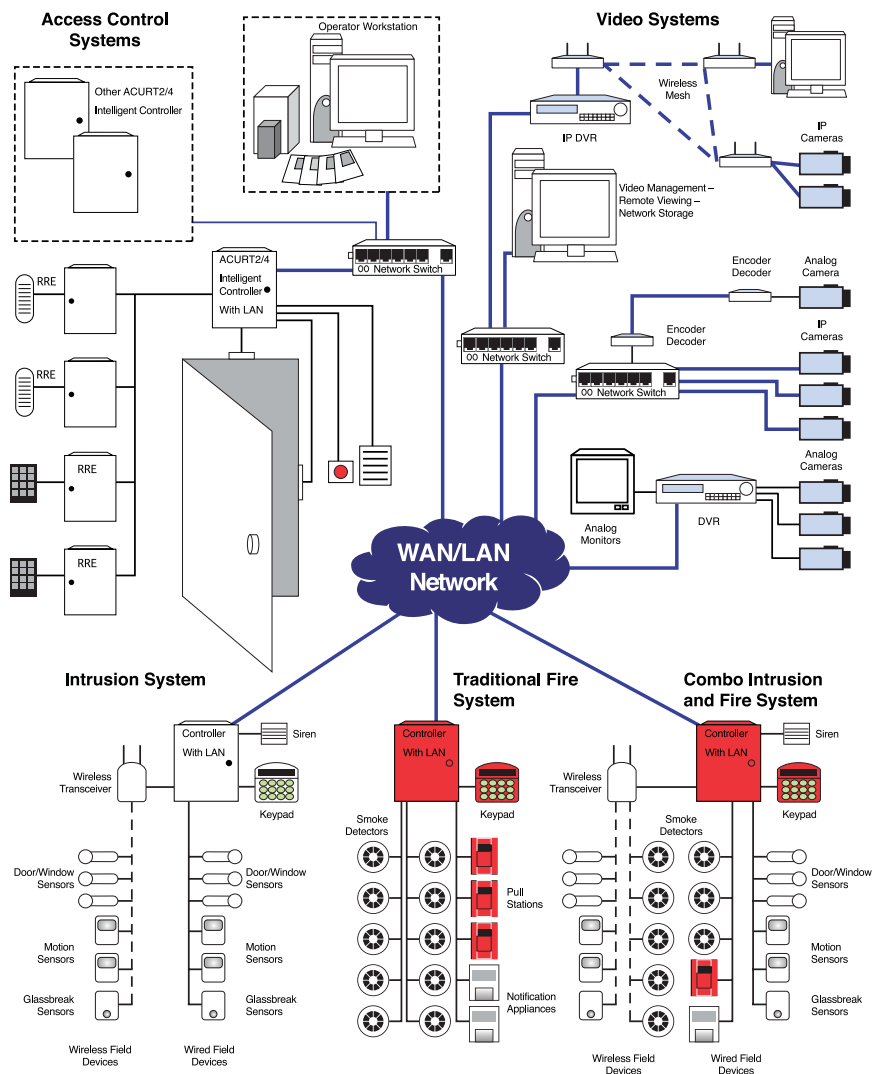
INTRUSION:

Today, you have more than simple sensors and trips to secure locations – and it's easier than ever.

FIRE:

Alarms, detection and notification give you complete systems – that practically anyone can install.

The ideal solution – big or small, single-function or all-encompassing



Follow the security opportunity roadmap to success

The security experts at GE Supply know their way around security opportunities in all situations. From single-category and off-the-shelf solutions, to complete building-wide or campus-wide systems, we have the products and expertise to help you compete and win. We know how to make all your security and life-safety systems work together – seamlessly, efficiently and intuitively. That's important, because better system controls, reporting and interfaces are the kinds of differences your customers will see and appreciate every day.

Intrusion and access control. Intrusion and video. Fire and video. An entire all-encompassing system. With all these variables, the help and advice of field-experienced professionals can help deliver the ideal product solution. The first time and every time. So you can land more business and have fewer callback and troubleshooting problems. Go ahead – position yourself as the end-to-end provider of security and life-safety solutions in your market. It's easy with GE Supply. Anywhere in the country. For any application. We have the products and experts with the right answers for every application.

Contact your **local branch**, call **1-877-969-8030** or visit **www.gesupply.com**.

GE Supply. Nationwide resources powering local service and support.

All the security, life-safety and electrical products you need. Wherever and whenever you need them.

Over 250,000 SKUs, 3.5 million square feet of warehouse space. More than 150 locations across the U.S., Puerto Rico, and internationally. GE Supply became a world-class electrical products supplier by committing the resources to get you what you need, where and when you need it. It's a simple premise, but one all too often overlooked in today's bottom-line oriented world. We're bringing that success-focused sense of urgency to security and life-safety professionals. So you can get the advantage you need to compete and prosper in one of today's most promising industries.

More ways to win with GE Supply:

- Products from over 200 manufacturers – backed by the expertise of our team of Security product specialists.
- The latest e-Commerce productivity tools on www.gesupply.com.
- A Global Sales Center (GSC), providing a single, uniform point-of-entry and support for our small to medium customers.
- Global Account Management to support large, multi-location customers.
- 24-hour emergency service.
- The Tech Center, for single-source technical support, sales and customer service for security, motors, and automation & control products.

We deliver all these resources with a focus on improving your profitability and competitiveness. Major investments in unique programs, systems and procedures give you an edge you simply can't get anywhere else. So you're more efficient, more productive and more agile every day. On every job. Because it's not just about getting products. It's about uncovering, winning and maintaining complete solutions that build long-lasting customer relationships. We'll help you do just that.

Since 1929, GE Supply has made it our business to create innovative solutions to make our customers more successful – and the tradition continues today. No matter where you are, how big you are or how small you are, GE Supply offers the products, technical and administrative support, and fast, reliable delivery to be your one-stop security supplier. That's the power of partnering with a market leader. One dedicated to helping you overcome today's challenge to "do more, with less."

That's the power of GE Supply.

For more information, contact your **local branch**, call **1-877-969-8030** or visit **www.gesupply.com**.

GE Supply is headquartered at:

2 Corporate Drive
P.O. Box 861
Shelton, CT 06484
203-944-3100

TABLE OF CONTENTS

1

Video
PAGES 7-13

2

Access Control
PAGES 15-17

3

Intrusion
PAGES 19-21

4

Fire
PAGES 23-26



***It's everything you need
for sophisticated video surveillance,
but the least of what we offer you.***

Components are fine, and Infinova manufactures everything you need to build your surveillance systems. From cameras to matrix switchers. But more important is the engineering expertise we offer for every project.

We'll design your systems with the best combination of analog, IP and hybrid components for what you want to accomplish. Please call **888-685-2002** or visit **www.infinova.net**.

Infinova[®]

1

Video

Access Control

Intrusion

Fire

The Power to See Things Differently



It's not just about mounting cameras and running cable. The video systems that serve as integral parts of today's security applications can be technological marvels of capability and simplicity. As the industry transitions from analog to IP technology, video's promise and challenges will grow.

GE Supply delivers the products and expertise to get you up to speed on all the video advances. We're ready to help you create solutions that are suitable for today's need and scalable in the future. See the promise of tomorrow's video advances at GE Supply today.

PTZ

Pan-Tilt-Zoom Cameras, IP or Analog, Various Mounting Configurations, Coax-UTP-Fiber transmission, interfaces to existing Video systems, camera control hardware and software. For use in guard tours, preset alarm or manned applications.

- Programmable Tours and Pre-Sets
- Image Stabilization
- Indoor/Outdoor Mounting
- Day/Night Applications



Dome

A wide array of aesthetically integrated dome cameras and housings, low cost, IP or analog, vandal resistant, day/night, various mounting configurations, discrete ultra mini domes. For use with Coax, UTP or Fiber.

- Protects/Conceals Camera
- Indoor/Outdoor Mounting
- Surface/Flush Mounting
- Day/Night Applications



Traditional

Full array of cameras to fit industrial, commercial or specialty applications. Wide selection of lenses, mounts, environmental housings. Specialty cameras for process lines, furnace, Hazardous Area and low ambient light applications.

- Wide Variety of Lens Choices
- Versatile Mounting
- Day/Night Applications



Bullet

Low light, cost effective bullet cameras. Variety of mounting options. Self contained for stand-alone and residential applications. Integrated IR Illuminators, variety of lenses. Great for entry ways, storage units and anywhere where small size is critical or where low light exists.



Hazardous Area

Explosion Proof, Increased Safety, Dust Tight. Cameras to meet either IEC or NEC standards. Variety of mounting options, environmental protection and focal length to meet the most demanding applications.



Covert (exit, smoke, clock)

For those places where your surveillance needs to be hidden. Wide array of cameras disguised as: Clock, Exit Sign, Smoke Detector, PIR, etc. Components such as board cameras, mounting hardware, integrated DVR, wireless transmission available for custom applications.



Installation Supplies

It takes more than security products to complete an installation. That is why we have everything you need in one place and ready to go. From a complete selection of electrical products and tools to select building supplies and fasteners, GE Supply has what you need, where and when you need it.



DVMRe

4,10,16 channel, 80GB-1TB, expandable SCSI external storage, Wave Jet compression for greater storage, ATM/POS interface, remote view WaveReader multi-site video software, Ethernet enabled, Made in the USA.



StoreSafe

StoreSafe PRO: Best suited for retail, banking, schools and wherever a simple archiving and retrieval DVR is needed. Integrated CD/DVD burner for easy evidence transfer, 4,10,16 channel, 80-600GB hard drives. Industry leading ATM/POS interface, simplified front panel or WaveReader multi-site software interface. Ethernet enabled, Made in the USA.



Digia

Cost effective Digital Video Recorder. MPEG4 compression, 160GB Hard Drive, USB2 slot for easy evidence transfer, small size makes it great for areas without much desk or cabinet space. Ethernet enabled.



Vitek

Embedded Linux operating system, 4, 8,16 channel, up to 2TB storage internal and 20TB external, multi-site remote view software, supports Dynamic IP, backup to external HDD-USB-CD-DVD, 8 channel audio. Ethernet enabled.



Infinova

Up to 16 channels of video expandable with multiple units, 16 channels of bi-directional audio, remote multi-site video management software, video compression for maximum HDD utilization. Ethernet enabled.



Traditional Analog video systems have been a mainstay in security applications for years, though they have their limitations. Video signals are routed over conventional means to a VCR or Digital Video Recorder (DVR) to store video and allow network access in some cases. The network accessibility is determined by the DVR. In an IP system, industry standard computer hardware stores, distributes and manages the system and each camera holds a unique IP address. The result is a system of the utmost flexibility, where camera viewing and video storage is expandable as needed, and commonplace storage hardware can be sourced from multiple manufacturers. GE Supply can help guide you through this evolving technology with technical expertise and real world application.

SymDec

MPEG4 storage, record and stream video from the “edge” of your network, accepts Analog and IP camera inputs, 4 channel audio, only 8.5” wide for dual mounting in standard 19” rack, records and streams full 30fps per channel at D1 resolution, works with GE SymSecure virtual matrix and management software.



Infinova

Supports up to 8 IDE hard disks, up to 500 GB each for up to 4 TB internal storage, MPEG4 compression, up to 16 channels of audio in/audio out, supports all major PTZ protocols, solid value embedded DVR.



Sony

Full line of Network Video Recorders, VAIIO PC, with expandable HDD up to 1TB internal, Serial ATA raid allows additional external storage. Supports NFS Version 3 for network protocol Video.



Dell-EMC-HP

GE Supply can help design and furnish video recording solutions using industry-standard hardware from Dell, EMC or HP. Our trained Tech Center engineers will determine what best suits your needs and provide full specs, necessary network provisions and all the related connectivity to optimize your IP Video solution.



Video systems have become more than just capturing images and displaying them on a monitor. They must be able to interface with adjacent systems, archive based on a host of events or exceptions, store on multiple servers and must allow differing levels of access in multiple locations and on multiple devices such as monitors, PDAs or cell phones. This functionality is the role of Video Management Software. This ever evolving segment is the heart of any hybrid or full IP video system. Let GE Supply help you provide the right software solution for your application, as well as the necessary hardware to pull it all together.

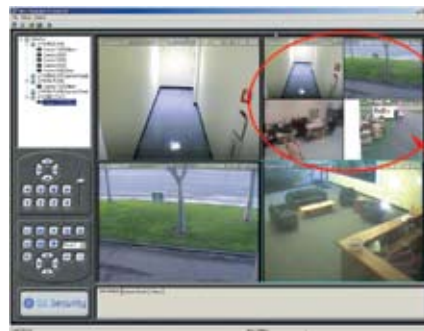
Onssi (On-Net Surveillance Systems, Inc.)

Onssi Video Clients allow for the view, review and programming of NVR's from anywhere. Usually used for systems of 64 cameras or under, but can provide the building blocks for expanding systems. Video Virtual Matrix is the most advanced solution available for intelligently viewing streams of dozens to thousands of cameras. Content video analytics are essential for mission critical analysis, detection and alerting. Supports all major camera brands. Onssi has the solution that fits your needs and budget.



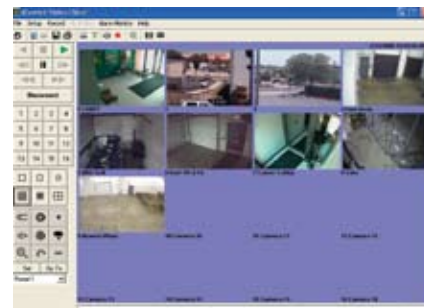
SymSecure

SymSecure is enterprise video management software that manages an unlimited number of cameras over an IP infrastructure. SymSecure software leverages a customer's IT infrastructure to provide networked video recording, virtual matrix switching, alarm management and seamless web access to live and recorded video. Works with GE Security Sym products as well as provides a codec solution for existing analog infrastructure.



WaveReader

WaveReader is the remote view video management software for GE Security DVMRe and StoreSafe DVRs. It allows for multiple viewers, remote programming, and global view of all cameras on a network. Perfect for multi-location retail, banking or schools. Includes remote diagnostic WaveWatch software to alert you if there are any DVR or Cameras not in operation or compliance.



LCD

GE Supply can provide you the latest in LCD flat screen monitors in a variety of sizes, colors and price points. This evolving segment of the monitor market has quickly become the standard for security video monitors.

- High Resolution
- Compact Size
- Multiple Source Inputs
- Wide Array of Mounting Options



Public View

Public View monitors are commonly used wherever you want to announce to customers the presence of surveillance as well as use the monitor to display marketing collateral. Public View monitors are available from a number of manufacturers. Marketing content can be transmitted to the monitor via the in-store network, external USB memory sticks or SD storage. Often a camera is integrated into the monitor to capture the customer's image during entry to the store.

- Integrated Camera
- Promotional Media Compatible
- Publicizes Presence of Video Surveillance



CRT

Conventional CRT monitors are available in various sizes, resolutions, colors and mounting configurations. Their clear picture makes them a solid choice for analog video systems. They are also the most cost effective means of displaying video.

- Low Cost
- High Resolution



Topaz, your new best friend

Access control bundled for action

Fetch

Topaz brings you starter and expansion kits for no-fuss ordering. (Design your system with only 14 part numbers.)

Let's Go

Topaz gets you up and running quickly with Auto Configuration, Batch Card Add, and Device Tree.

Good Boy

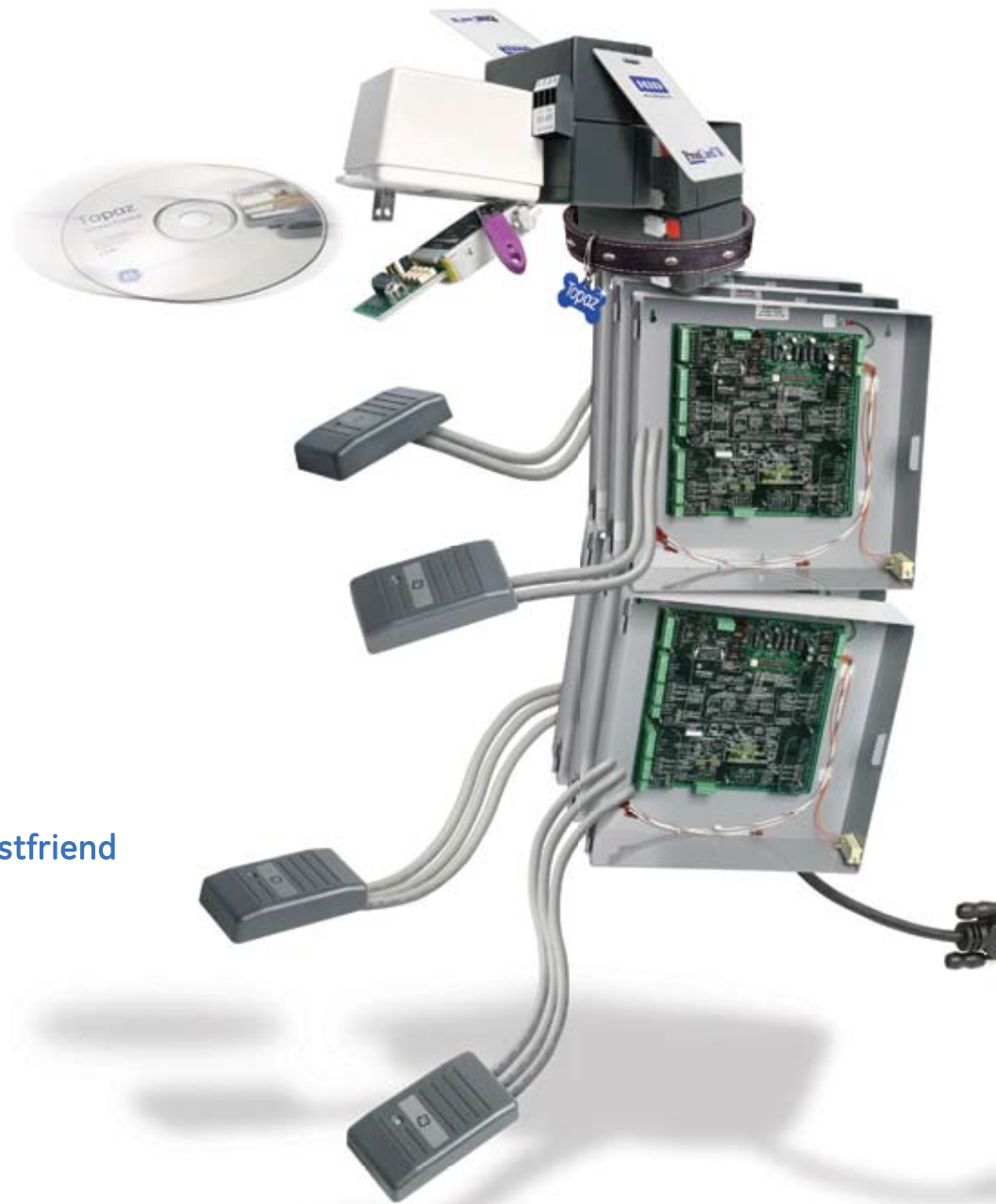
The friendly nature of Topaz includes one-click video, interactive color graphics, and a browser-like interface.

Stay

You can always count on Topaz for reliability and support. It's backed by GE and available through distribution.

Take a walk with Topaz!

Visit www.gesecurity.com/bestfriend



imagination at work

2

Video

Access Control

Intrusion

Fire

Access Granted: To a new level of access control flexibility

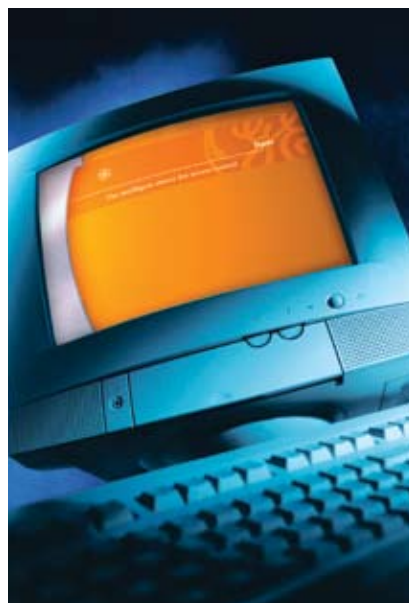
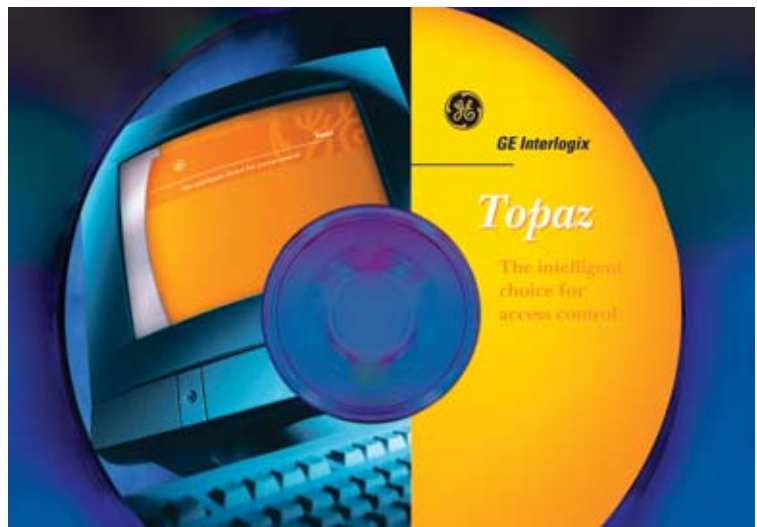


With a solid access control system, you can be smarter about who you let in, who you don't and when. Today's systems allow for not only stand-alone access, but are also integrated systems allowing for alarm, video and access control to work in harmony. Our simple-yet-complete solution comes packaged with everything needed to get a system up and running quickly and reliably. GE Supply can help you whether you have 1 door or 1000.

Integrate access control, video surveillance, alarm monitoring, and photo ID badging with the Topaz Access Control System. Topaz is packaged with everything you need to get your security system up and running quickly and reliably. The Topaz package includes a quick start menu for Auto Configuration and Batch Add cards, which you can activate instantly with a mouse click. Topaz uses a simple browser-style interface with full color maps, interactive icons and pop-up video. Packaged in complete two and four door starter kits and expansion kits, Topaz provides everything you need for systems with up to 256 readers. Photo ID badging and report generation with preconfigured and custom reports are all part of your Topaz package.

Features include:

- Integrated video surveillance
- Robust communication options
- Auto configuration
- Browser-style interface with interactive color graphics
- Up to four fully functional workstations
- Photo badging software included
- Report generation
- Data guard
- Video Integration with PTZ control included
- Entry and exit delays by area
- ACURT2 and ACURT4 intelligent controllers
- Starter and expansion kits



Readers

Readers for every new installation and every add-on to existing systems. Keypads, proximity, mag-stripe in a variety of formats. We have what you need for credential verification.



Cards

Prox, Bar Code, Smart cards...we have them. Let GE Supply be your source for additional cards or let us solve your employee identification and credential needs. GE Supply provides blank cards or can custom design and imprint them for you. Many formats supported: iCLASS®, Wiegand, Mifare, plus others.



Biometrics

Keep up with the latest in Biometric technology. Biometrics provide enhanced credential verification through fingerprint, hand geometry, retina scan and other technologies. We will keep you up to date with the best solution for your needs from the best brands in the industry.



Door Hardware

GE Supply stocks a wide array of door hardware for your access control needs. Electric Strikes, Mag Locks, Crash Bars and ADA compliant peripherals.



GE Supply

Ready for an
easier way
to defeat job
site losses?



Protect yourself from job site loss of supplies, tools and profitability with a JobSight™ security system from GE Supply. Customized for each location, JobSight is the complete, economical solution that's ready today – from cameras and recorders to sensors and sirens. We can integrate with your IT systems, mobile communications or security/guard company.

Contact *your local branch*, call **1-877-969-8030** or visit **www.alarm.com/gesupply** and have JobSight keep an eye on your job site.

3

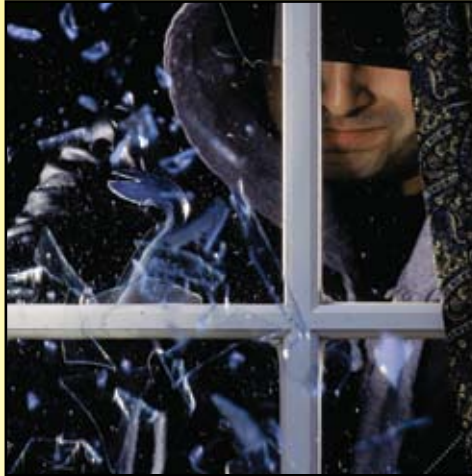
Video

Access Control

Intrusion

Fire

Put good products in to keep bad people out



GE Supply offers Intrusion products that provide security and life safety for applications from retail stores to manufacturing facilities to residential. We give you the tools you need to install comprehensive intrusion solutions for jobs, large and small. Panels, sensors, switches, controls – we have it all. **And** the expertise to draw it all together for you.

We also follow through on our promise to help you do more with less. For example, a modular intrusion and fire control panel from GE Supply can save your customers time, space and money. All while ensuring their needs are being met today and well into the future. It's peace of mind for your customers and a bigger piece of the market for you.

NetworX

NetworX systems make standardizing your intrusion installation easier than ever. One platform can accommodate up to 192 zones. NetworX supports hardwired and wireless devices. A commercial fire rated version is available that is as easy to program as a security panel. NetworX systems offer features once found only on advanced commercial panels, at no additional cost. Several options are available.

- Cellemetry
- Ethernet and Pager Communications
- Self Monitoring Capability
- Door Control Capable with Card Readers
- Home Automation Module
- PinPoint Addressable Point Feature
- Wireless
- Alarm.com Gateway



Keypads

Wide variety of products to meet functional and aesthetic needs of customers.

- Integrated Wireless Receiver Keypad
- Touch Screen Keypads
- Wireless Keyfob
- Fixed English
- LCD



Motion

Industry Leading RCR dual technology detectors virtually eliminate false alarms. Widest offering of motions...no matter what your application. Stealth Mode for mounting behind walls. Indoor, Outdoor, 360 degree, Long Range, Hazardous Area – we have it.



Glassbreak

Wide array of glassbreak detectors. ShatterPro™, Acoustimass, PrecisionLine™ recessed, surface mount, up to 35 ft range. Glassbreak sensors – an accurate and cost effective way to protect large areas with windows and doors.



Contacts (magnetic, plunger)

Magnetic Contacts for security and industrial applications. Door/Window, Cabinet, recessed, wireless or hardwired. A variety of packaging for lower cost and service truck needs.



Specialty (environmental)

Environmental sensors (moisture, temperature), seismic/shock, ATM/Vault, window bar protection, construction equipment theft detection and more. If you have something that needs protecting, we have the way to monitor it.



Looks good. Works great.



Finally a complete line of fire signals that doesn't remind you of elementary school. Meet the contemporary, architecturally designed Edwards Genesis® line. This full spectrum of audible and visual emergency signals looks good enough to fit in everywhere. And since they mount in standard electrical boxes – without extension rings – they're easy to install anywhere.

Horns, horn/strobes, chimes, chime/strobes, wall and ceiling speakers, wall speaker/strobes, ceiling speaker/strobes – there's a Genesis solution to do precisely what you need. For even more flexibility, strobes are selectable, multi-candela units.

Visit gesecurity.com/signaling to check out the hottest looking fire signals around. And remember their most attractive feature – they work even better than they look.



imagination at work

4

Video

Access Control

Intrusion

Fire

There is no substitute for sound fire safety solutions



Fire detection continues to be a baseline safety necessity. But the options available today are anything but simply baseline. GE Supply offers the newest technology available in the market. You can choose devices that project infrared beams to detect smoke, or use sophisticated electronic heat sensors. We also offer self-diagnosing equipment that lets you know ahead of time when the product needs maintenance or repair.

With all this technology, we help you avoid the very real danger of over-engineering, or under-engineering, a solution. Give us your building parameters, and we will help you with your design.



Firelite (Honeywell)

The Firelite Alarm System offers easy installation, operation, and maintenance. Suited for stand-alone applications, it is ideal for commercial or industrial facilities requiring performance-based, sophisticated technology at reasonable cost.

- Addressable point identification
- Drift compensation
- Built-in digital communication



FireworX™

FireworX panels incorporate features designed to simplify installation, operation and maintenance. These include front panel programming, one person walk testing, and selectable IDC and NAC types. In addition, these panels have combination waterflow and supervision IDC. FireworX panels are powerful enough to meet the demands of today's installations while leaving plenty of room to grow in the future.



NetworX-CF (commercial intrusion/fire system)

Now you can get a UL 864-listed commercial fire solution with the programming ease and flexibility of NetworX. The NX-8-CF is a 12V integrated burglary/fire product for commercial applications. It's the simple way to expand into commercial fire without the cost and frustration of learning a new platform. NetworX-CF is ideal for applications where integrated systems provide the most comprehensive, cost-effective solution.



Smoke Detectors

GE Supply offers a wide array of photoelectric and ionization smoke detectors for varied applications. Available features include: Self-diagnostics, Drift Compensation, Replaceable Optical Chambers. Many UL Listed with a variety of panel manufacturers.



Heat Detection

GE Security's heat detectors offer rate-of-rise/fixed temperature, and fixed temperature only features for high performance and reliability. The rate-of-rise feature detects intense fires by responding to rapid temperature increases. The fixed temperature feature reacts to fires when a specific temperature is reached.



Manual Pull Stations

We carry a wide selection of manually operated non-coded devices for initiating fire alarm signals. The pull handle latches until the station is reset by operating the station cover. Units are available in single or dual action, with terminal or pigtail connections, and for surface or semi-flush mounting. For use with a variety of panel manufacturers.



Specialty (beam)

Projected beam smoke detectors are intended for industrial and commercial applications, especially with vaulted ceilings, gyms, or warehouses. They allow installation of just one detector in areas that would normally require two or more spot sensors. A great labor and money saver.



GE Supply can provide the audible or visual emergency signaling components and accessories to complete your signaling system. Devices are available for almost any application including horns, strobes, speakers, bells and sirens. Commercial or Industrial - We have the signaling products you need.

Visual & Audio-Visual

Strobe lights are available in numerous colors, with or without audible signaling capability. They are also available in various NEMA enclosure types to meet your needs in all applications.



Auditory Signaling

GE Supply offers auditory signaling devices in many forms. These include speakers, horns, bells and sirens in both wall or ceiling mount configurations. All of these are available in various NEMA configurations to meet your commercial and industrial applications.



Signaling Accessories

GE Supply can provide a myriad of accessories to complement and complete your security installation; this includes relays, signal actuators, signal converters, amplifiers, transformers, or any other item required to complete your signaling system.



Security Products



Let us help you specify, design and provide all your security installation needs. GE Supply stocks these market leading GE Security products as well as a wide array of non-GE complementary items.

Access Control

GE Alliance
GE NetworX
GE SapphirePro
GE Topaz
HID
IMAG
RCI

Cable, Connectors and Accessories

Coleman Cable
Cooper B-Line
Dell
ERICO
Gem Electronics
General Cable
IDEAL
Labor Saving Devices

Panduit
Pass & Seymour
Thomas & Betts
Wiremold

CCTV

Cohu Technologies
Extreme CCTV
GE MobileView
GE Video
Infinova
Sony
Tatung
Vigitron
Vitek

Communications and Signaling

Aiphone
Dukane
Edwards Signal

Ethernet/Fiber Networking

GE FiberOptions
GE IFS
GE Multilin
N-Tron

Fire Alarm

Fire-Lite
GE ESL
GE NetworX
Summit/Mircom
Wheelock

Intrusion

GE Alliance
GE NetworX
GE Sentrol

GE Security (Sentrol) –
Environmental Sensors
Glass Break
Magnetic Contacts
Motion Sensors
Wired and Wireless

Power Supplies

Altronix
GE Security
Interstate Battery

GE
Supply



Need a hand?

For more information:
contact your **local branch**,
call **1-877-969-8030**
or visit **www.gesupply.com**.

Pub # GES2006/10-1