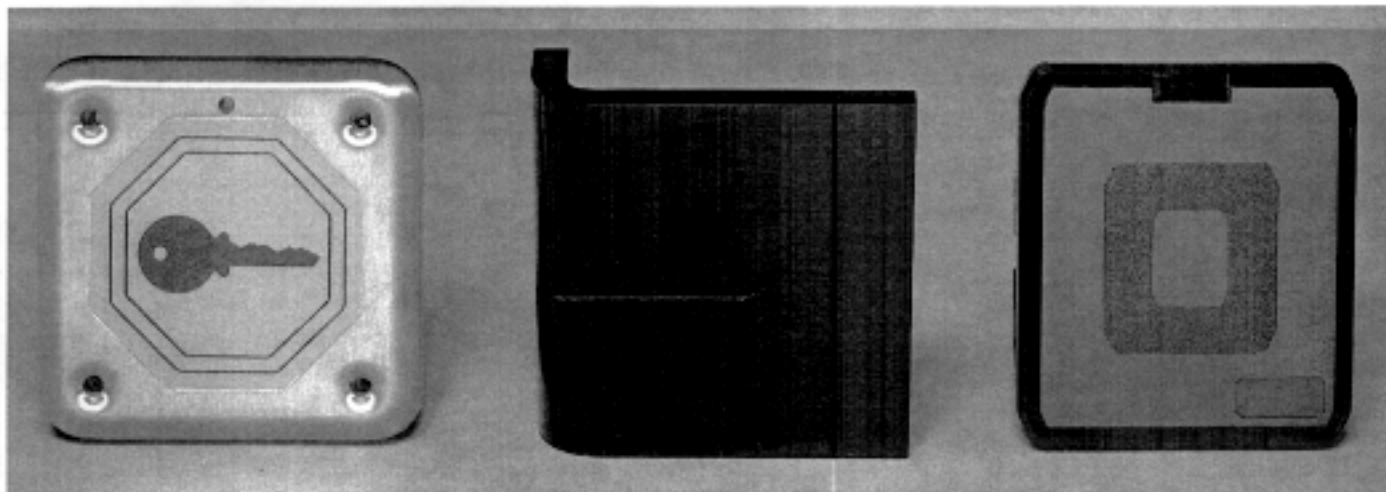


READYKEY® K2001 and K2002 Readers and K2016, K2017, K2018 Mounting Brackets Specification Sheet



Description

Two readers available for use with the READYKEY® K2000 series door controllers are the K2001 and the K2002 Readers. The two readers include an LED to indicate valid key access. Both readers are low profile and weatherproof and can be mounted behind non-ferrous materials without any adverse effect on readability.

The reader technology is Touchfree™ (proximity) with a read range of up to two inches. The readers can be mounted outdoors without additional environmental protection, and operate from -49°F to 122°F (-45°C to 50°C), within a relative humidity band of 0% to 90% non-condensing.

The readers are powered from the door controller and do not require an additional power supply. They are capable of operation up to 3,000 feet from the K2000-N or K2000-AM Door Controllers using standard 22 AWG, 4-conductor cable. The status of the reader and the cabling is monitored and includes tamper indication.

K2001 Reader

The K2001 is a low profile reader constructed from a durable black plastic. This reader can be flush or surface mounted, bracketed, or concealed behind glass, plaster work or any

other non-metallic surface. It has an approximate read range of 2 inches and serves one access point. The LED turns green to indicate valid access. Otherwise, it is red.

K2002 Vandal Resistant Reader

The K2002 Vandal Resistant reader is constructed from durable, heavy gauge stainless steel (.07", 14 gauge). It has a .5 inch read range from one direction only, and can be surface mounted with tamper resistant screws. The K2002 serves one access point. The LED turns green to indicate valid access. Otherwise, it is off.

K2016 Mounting Bracket

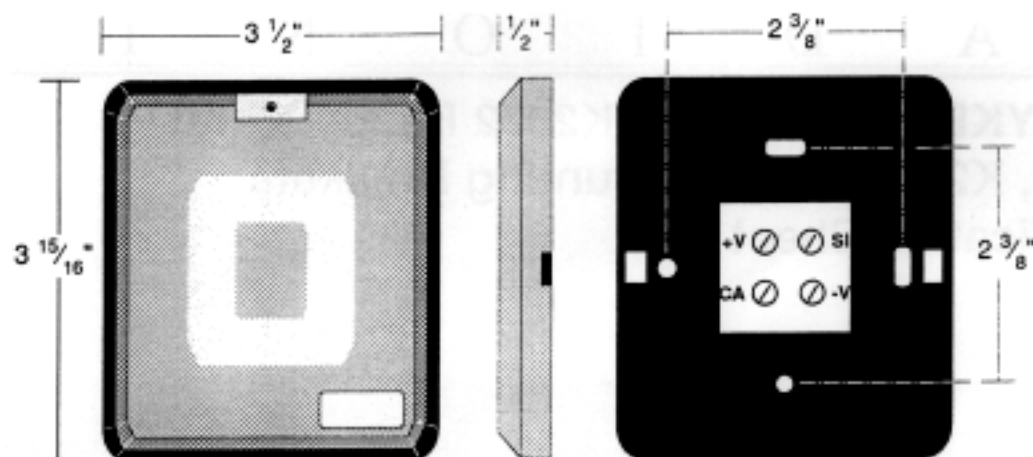
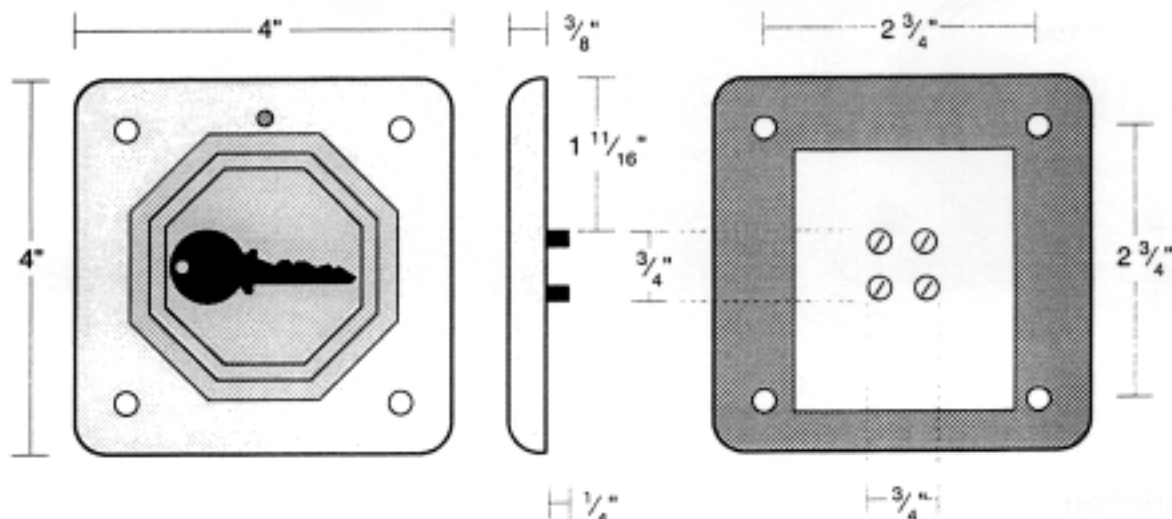
The K2016 Mounting Bracket is made from a durable black plastic. It is used to mount the K2001 Reader to a metal door/window frame to hold the reader behind glass.

K2017 Mounting Bracket for the K2001

The K2017 Mounting Bracket is a plastic adaptor plate suitable for mounting the K2001 onto an electrical outlet box.

K2018 Mounting Bracket for the K2002

The K2018 Mounting Bracket is a metal adaptor plate suitable for mounting the K2002 onto an electrical outlet box.

K2001**K2002****K2001 and K2002 Specifications**

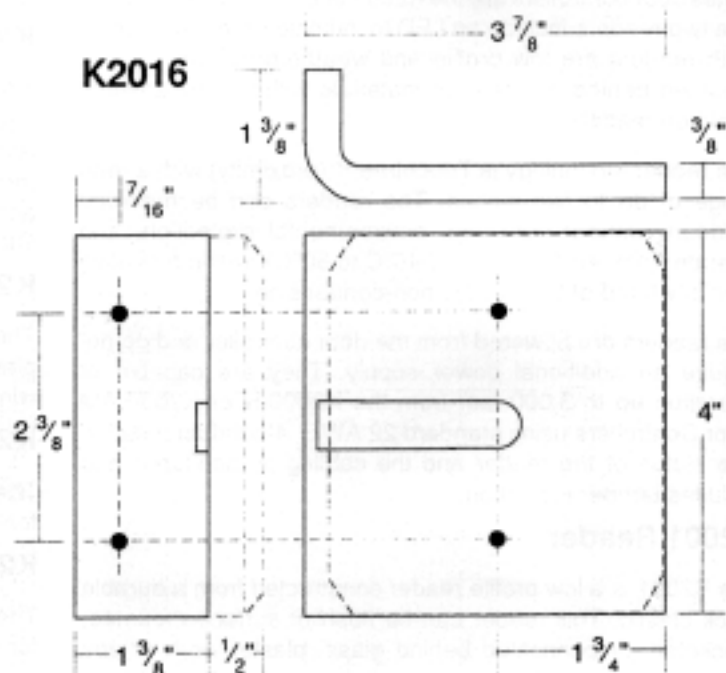
Operating Voltage: 10-18 VDC at the Reader
Current Requirements: 90 mA
Read Range: K2001 = 2 inches.
 K2002 = .5 inch.
Compatible Keys: K2010 Electronic Keys
Cable Type: 4-wire, 22AWG alarm cable.
K2000 to Reader: Up to 3,000 feet.
Environment: Temperature: -49°F to 122°F
 -45°C to 50°C
 Relative Humidity: 0 to 90% non-condensing.
The humidity for UL294 listed applications is 0-85%.

K2016 Specifications

Compatible Reader: K2001
Parts Included: Two 8x3/4" screws, and two 6x3/16" screws.

K2017 and K2018 Specifications

Refer to K2017 and K2018 Mounting Brackets Installation Instructions, RPN 74-06665-000.

K2016**Radionics™**

Radionics, Inc., 1800 ABBOTT Street
 SALINAS, CA 93912-0012 U.S.A.