

## Specifications

### Description

The alarm graphics module allows you to attach graphic files to doors and alarm points in such a way that the location of an alarm is quickly and clearly displayed when an alarm is received by the Readykey® for Windows™ system.

### Application

You can easily create your own graphics: for example, building layouts with alarm points highlighted. These graphics can make your system more meaningful to system operators.

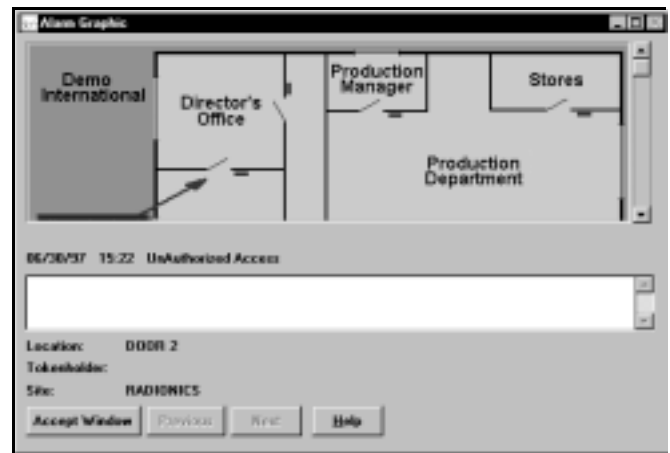
### Installation

Graphic files must be in a Windows bitmap (BMP) format. This format is supported by most PC based graphic packages, including Microsoft paintbrush which is included as standard with every copy of Microsoft Windows.

Graphics are then assigned to doors and alarm inputs within the Installer application in Readykey for Windows.

Graphics that have been assigned to doors and alarm inputs may be displayed by clicking the 'Info' button within the alarm application. This may be done from the alarm event window (a screen that appears automatically when any alarm has occurred) or from any of the alarm queues.

The Readykey for Windows alarm graphics module is available at no charge when you buy any Readykey for Windows system.



### Trademarks

Windows™ is a trademark of Microsoft Corporation

Microsoft®, is a registered trademark of Microsoft Corporation

Readykey® is a registered trademark of Radionics



CERTIFICATE NO. A5137



## Radionics®

© 1999 Radionics, a division of Detection Systems, Inc.  
® The Radionics logo is a registered trademark of Radionics,  
PO Box 80012, Salinas, CA 93912-0012, USA

33883C  
Specifications  
L819

9/99  
Readykey  
Page 1 of 1