

G Series: D9412G Control Panel

The D9412G Control Panel provides an integrated solution for Access Control, Security, and Fire Alarm system applications. The control panel can monitor alarm points for intruder alarms or fire alarms while operating user command centers and other outputs. The control panel includes a built-in communicator that reports events to selected PSTN or IP network destinations through four programmable route groups. The D9412G Control Panel provides eight on-board detection points and up to 238 off-board detection points. It provides 128 relays, and up to eight access control doors. Grant access from a Wiegand style card reader connected to: a D9210B Access Control Module, a request-to-enter or request-to-exit input, or a command center.

■ Control Features

- Eight on-board detection points and up to 238 off-board detection points
- 128 relays
- Eight access control doors
- 8 programmable areas with perimeter/interior partitioning
- Real-time clock and test timer
- Up to 1000-event log (including event modifiers), including time, date and event with area, point and user number
- Battery charging circuit, AC power and voltage supervision
- Automatic reset circuit breakers
- Lightning and EMI suppression
- Power limited external circuits

■ Communicator Features

- Built-in digital communicator with phone line monitor (loop or ground start)
- Multiple telephone numbers, primary and duplicate paths with main and alternate destinations
- All reports within each of four route groups are programmable
- Optional dual phone line switcher monitors two phone lines
- Optional network interface module for bi-directional communication over Ethernet networks
- Automatic test and status reports
- Time windows for arming and open/close report suppression
- Programmable answering machine work-around for remote programming on shared phone lines

■ Functionality

Programmable outputs

- 2 A alarm power @ 12 VDC
- 1.4 A auxiliary power @ 12 VDC
- Four alarm output patterns
- Automatic bell test
- Programmable bell shut-off timer

The D9412G Control Panel provides up to 246 individually identified addresses. Each address accommodates normally open and/or normally closed devices with end-of-line resistor supervision. Each point is programmable for fire, fire supervisory, or burglary applications.

System response

- 31 custom point indexes, including fire supervisory
- Selectable point response time
- Cross point compatibility
- Fire alarm verification
- Fire inspector's local test
- Watch mode
- Scheduled events (Skeds) arm, disarm, bypass and unbypass points, control relays, control authority levels, control door access and more

User interface

- Supervises up to eight command centers (up to 32 non-supervised command centers can be used)
- Custom command center text
- Full function command menu including custom functions
- Each user has authority by area and 16-character name
- Fourteen custom authority levels control user's authority to change, add, delete passcodes or access control tokens/cards, disarm, bypass points, and initiate system tests
- Adjustable brightness/volume for command center display/sounder

Note: At least one command center per system is recommended.

Area configurations

Area programming offers a wide selection of different system configurations. Each area has an account number to define annunciation, control, and reporting functions. Multiple areas can be linked to a shared area which is automatically controlled (hallway or lobby). Area arming can be conditional on other areas (master/associate).

User passcodes

Each passcode individually programs with three to six digits in length and no fixed digits. Each user is assigned one of fourteen customized authority levels in each area. You can program passcodes to operate only during certain times. Each user can have a 16-character custom name. You can view, print, and report the user's name to a central station in Modem IIIa² Communications format; you can retrieve a user's name with Remote Account Manager (RAM IV) software.

Security and fire detection

The D9412G Control Panel provides eight on-board detection points, and up to 238 additional off-board points (depending on model and expansion interfaces). You can program individual points to monitor devices such as burglar alarm devices, fire alarm devices, and supervision devices.

Event log storage, viewing and printing

All local and transmitted events (up to 1000 total events) are stored in a log. The event log includes time, date and event, with area, point and user number. Users can view the event log from Alpha Command Centers. The Remote Account Manager (RAM IV) software can retrieve events from remote sites. With the correct printer interface module installed, the D9412G Control Panel can use up to three on-site parallel printers. The Event Log and a local printer can provide a record of openings and closings without extra communications costs. RAM IV operators can retrieve events periodically using one phone call, rather than receiving several calls each day. When the control panel's event log reaches the storage limit, it can send a report to a receiver. This report reminds the central station to retrieve events from the control panel's event log.

You can store, view, or print access events such as:

- Access granted
- No entry
- Request To Enter
- Request To Exit

Access Control

- Custom door strike, point shunt and auto disarming response by area
- Logging options for: Access Granted, No Entry, Request to Exit, and Request to Enter
- Fourteen panel-wide access levels with both manual and scheduled control

Scheduled events (Skeds)

The D9412G Control Panel's internal clock and calendar help the panel(s) operate individually scheduled events (Skeds). Skeds perform a specific function such as arm/disarm, relay control, or point bypassing. The D9412G Control Panel offers:

- 64 scheduled events with up to 26 different functions
- Day-of-week or date-of-year schedules
- Four holiday schedules of 366 days each (leap year)

Fire test

When a user activates Fire Test Mode, the control panel suppresses reports to the central station. Fire Test Mode activates with a passcode at the command center. All testing data is visible on the command center and annunciator during testing. An automatic sensor reset feature saves you time; you do not need to reset the sensors manually. At the end of test, the command center shows the number of untested points.

Programming, diagnostics and controls

Users can program all system functions on-site through a D5200 Programmer, or remotely through Remote Account Manager (RAM IV) software. A programmable system passcode prevents unauthorized remote programming.

The control panel accommodates up to four separate telephone numbers for primary, alternate and backup receivers for automatic test reports.

A name and number identifies any user who resets alarms or any user who arms or disarms a system.

■ Approvals

UL Standards	UL365, Police Station Burglar Alarm Units and Systems UL609, Local Burglar Alarm Units and Systems UL864, Control Units for Fire-Protective Signaling Systems UL985, Household Fire Warning System Units UL1023, Household Burglar-Alarm System Units UL1076, Proprietary Burglar Alarm Units and Systems UL1610, Central-Station Burglar-Alarm Units UL1635, Digital Alarm Communicator System Units
Approvals	FCC: AJ9MLU-46532-AL-E Factory Mutual CSFM: <ul style="list-style-type: none">• 7165-0801:123, Control Units - Non-High Rise• 7170-0801:175, Control Units - High Rise

■ Specifications

Communications	
SDI Bus A (+):	9 VDC 4572 m (15000 ft.)
SDI Bus B (-):	9 VDC 4572 m (15000 ft.)
Telephone Connection:	2 TelCo lines D928 Dual Phone Line module required for two phone lines
Enclosures	
	D8103 Universal D8108A Attack Resistant D8109 Fire
Environmental Considerations	
Relative Humidity:	5%-85% at +30°C (+86°F), non-condensing
Temperature (Operating):	0°C to +50°C (+32°F to +122°F)
Number of...	
Cards/tokens:	996
Card Readers (Doors):	8
Custom Functions:	16
Detection Points:	246 (8 on-board, up to 238 off-board)
Door Relays:	128
Hardware Addresses:	246
Parallel Printers:	3
Passcode Users:	249, plus 1 service passcode
RF Points:	238
Power Requirements	
Current Draw (Minimum):	200 mA
Current Draw (Maximum):	500 mA
Output (Alarm):	2 A @ 12 VDC
Output (Auxiliary, Continuous Power, and Switched Auxiliary combined):	1.4 A @ 10.2 VDC to 13.9 VDC
Voltage (Operating):	12 VDC
Voltage (AC):	16.5 VAC 40 VA two plug-in transformer (D1640)
Voltage (DC):	Up to two 12 VDC, 7 Ah sealed lead acid rechargeable batteries Up to two 12 VDC, 18 Ah sealed lead acid rechargeable batteries

■ Hardware Accessories

Command Centers and Accessories

D54B Flush Mount Kit



Back box and polished brass faceplate. Used with: D279A, D720, D1255, D1256, D1257.

D54C Flush Mount Kit



Back box and stainless steel faceplate Used with: D279A, D720, D1255, D1256, D1257.

D54B-1260 Flush Mount Kit for D1260



Back box and polished brass faceplate used with D1260 Alpha V command center.

D54C-1260 Flush Mount Kit for D1260



Back box and stainless steel faceplate used with D1260 Alpha V command center.

D55 Command Center Desk Stand



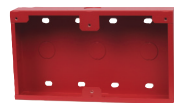
Portable desk stand in smoke colored Plexiglas. Used with D279A/AW, D720/W/R, D1255/W/R, D1256, D1257, D1260.

D56 Conduit Box



White surface mount box for installations requiring conduit to a command center. Command centers mount on conduit box. Dimensions (H x W x D): 12 cm x 21 cm x 3 cm (4.56 in. x 8.25 in. x 1.05 in.)

D56R Conduit Box



Red surface mount box for installations requiring conduit to a command center. Command centers mount on conduit box. Dimensions (H x W x D): 12 cm x 21 cm x 3 cm (4.56 in. x 8.25 in. x 1.05 in.)

D279A Independent Zone Control



Self-contained independent point control allows individual points to be armed and disarmed separately from the rest of the system. Includes one user-programmable pass code and built-in panic button. A single zone can be branched into one instant loop and one delayed loop. Can initiate opening and closing reports from a single control panel point. Includes built-in form C relay, entry delay buzzer, one delay loop LED, one instant loop LED and one armed LED. Available in off-white.

D279AW Independent Zone Control



Self-contained independent point control allows individual points to be armed and disarmed separately from the rest of the system. Includes one user-programmable pass code and built-in panic button. A single zone can be branched into one instant loop and one delayed loop. Can initiate opening and closing reports from a single control panel point. Includes built-in form C relay, entry delay buzzer, one delay loop LED, one instant loop LED and one armed LED. Available in white.

D720 8 Point LED Command Center



Low profile digital command center with backlit keypad. Annunciates system status with indicator LEDs and piezoelectric sounder. Individual point-status LEDs indicate condition of up to 8 points including fault, alarm memory and bypass. Includes 3 programmable one-touch function keys, and a four-wire connection. The D720 is off-white.

D720W 8 Point LED Command Center



Low profile digital command center with backlit keypad. Annunciates system status with indicator LEDs and piezoelectric sounder. Individual point-status LEDs indicate condition of up to 8 points including fault, alarm memory and bypass. Includes three programmable one-touch function keys, and a four-wire connection. The D720W is white.

D720R 8 Point LED Command Center

Low profile digital command center with backlit keypad. Annunciates system status with indicator LEDs and piezoelectric sounder. Individual point-status LEDs indicate condition of up to 8 points including fault, alarm memory and bypass. Includes three programmable one-touch function keys, and a four-wire connection. The D720R is red.

D1255 Alpha IV Command Center



Digital arming station that illuminates when keys are pressed. Provides a 16-character vacuum-fluorescent English-language display, and a built-in speaker with distinct warning tones. Permits remote control of relays and real-time clock display, as well as for adding, deleting, changing pass codes, and system tests. The D1255 is off-white.

D1255W Alpha IV Command Center



Digital arming station that illuminates when keys are pressed. Provides a 16-character vacuum-fluorescent English-language display, and a built-in speaker with distinct warning tones. Permits remote control of relays and real-time clock display, as well as for adding, deleting, changing pass codes, and system tests. The D1255W is white.

D1255R Alpha IV Command Center



Digital arming station that illuminates when keys are pressed. Provides a 16-character vacuum-fluorescent English-language display, and a built-in speaker with distinct warning tones. Permits remote control of relays and real-time clock display, as well as for adding, deleting, changing pass codes, and system tests. The D1255R is red.

D1256 Fire Command Center



Digital fire alarm control station with 16-character vacuum-fluorescent, alphanumeric display. Provides system control over fire areas, housed in red plastic, annunciator programmable text identifying specific alarm, trouble and supervisory conditions.

D1257 Remote Fire Alarm Annunciator



Housed in red plastic, display 16-character customizable English text identifying devices and point of alarm. Housed in red plastic, annunciator programmable text identifying specific alarm, trouble and supervisory conditions. For use in public places. Does not provide system control.

D1260 Alpha V Command Center



Digital arming station illuminates when keys are pressed. Provides a four-line by 20-character LCD English-language display and a built-in speaker with distinct warning tones. Features eight soft keys. Resembles an ATM-style user interface. Permits remote control of relays and real-time clock display. Allows users to perform system tests and add, delete or change passcodes.

D5200 Hand-held Programmer



Portable hand-held local programmer. Operates on four C cell batteries (included). Expanded storage capability allows additional handlers and records to be stored. Portable laptop programmer used for on-site programming and contains all hardware necessary to program the system.

Zone Expansion and Interface Modules

D130 Auxiliary Relay Module (12/24 VDC)



Provides five A-rated contacts for switching auxiliary voltages and currents. Provides two form C dry outputs, polarized relay coil operates on 12 VDC or 24 VDC.

D136 Plug-In Relay



Accessory relay for control panels and modules. Maximum rating is 1 A @ 24 VDC or 2 A @ 12 VDC. Available individually (D136) or in a package of 25 (D136-25).

D8121A Derived Channel S.T.U. 5 Zone



Provides phone line supervision and five alarm zones plus on control output. Compatible with DCX systems. Includes mounting bracket for D8103, D8108A, or D8109 Enclosures. The D161 and D162 Modular Phone Cords are required. The D8121A is not UL Listed.

D8122 Derived Channel S.T.U. 5 Zone



Provides phone line supervision and five alarm zones plus on control output. Compatible with DCX systems. Includes mounting bracket for D8103, D8108A, or D8109 Enclosures. The D161 and D162 Modular Phone Cords are required. The D8122 has the following UL Listings: UL365, UL464, UL1610 and UL1635, UL1076, and UL864.

D8125 POPEX Point Expander



Provides a multiplexed data backbone for point expansion. Used with D9127T or D9127U POPITs or addressable detectors with built-in POPITs. Dimensions (HxW): 76 mm x 127 mm (3 in. x 5 in.).

D8128D OctoPOPIT, Eight Point Expander



Eight POPITs built into one OctoPOPIT. Can be used in conjunction with POPEX and POPIT, but does not require POPEX (D8125). OctoPOPIT may not be suitable for fire supervisory devices or fire initiating unless interfaced with D125B or D129 modules. Use with G Series Control Panels on ZONEX 1 (or ZONEX 2 on D9412G Control Panel only).

D8129 Octo-Relay Module



Contains eight dry-contact relay outputs, each relay is Form C rated at 1 A at 12 VDC, relays can be operated manually either through the command center, or remotely from the central station using RAM IV. Relay response can be programmed for automatic operations using various pre-programmed parameters within the panel.

D9127T POPIT Module



A 38 mm x 76 mm (1.5 in. x 3 in.) hardwired module that provides individual annunciation of alarms, troubles, restorals and missing conditions relating to a unique detection device. POPITs are wired in parallel on the D8125 data backbone. Each detector loop is supervised with a 33 kilohm EOL resistor. Up to 238 POPITs can be connected to a D9412G, up to 67 for D7412G system. Requires the D8125 POPEX Point Expander. Includes a magnetic tamper switch.

D9127U POPIT Module



A 38 mm x 76 mm (1.5 in. x 3 in.) module that provides individual annunciation of alarms, troubles, restorals and missing conditions relating to a unique detection device. POPITs are wired in parallel on the D8125 data backbone. Each detector loop is supervised with a 33 kilohm EOL resistor. Up to 238 POPITs can be connected to a D9412G, up to 67 for D7412G system. Requires the D8125 POPEX Point Expander. Does not include a tamper switch.

D9131A Printer/Parallel Printer Interface Module



A four-wire parallel printer interface that can be mounted up to 305 m (1000 ft.) from the control panel. Prints 80-character, single-line information including: date, time, event, account number, area number, user ID with text, point # with text and access events. Connects to a standard parallel printer via a standard parallel cable.

D9133 Serial Interface Module



Serial Device Interface (SDI) bus device used for bi-directional serial communications. Communicates at 300, 1200, 2400, 4800, and 9600 baud.

D9133DC Serial Network Interface Module



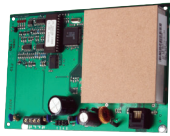
Serial Device Interface (SDI) bus device for use with RAM IV or RAM IV Lite software. Offers enhanced programming, diagnostic troubleshooting, and history retrieval.

D9133TTL-E Serial Network Interface Module



Serial Device Interface (SDI) bus device used for bi-directional communication over networks. Typically used for event reporting and remote programming for NetCom systems.

PC9133TTL-E Network Interface Module



SDI bus device used for bi-directional communication over networks. Typically used for Ethernet communications with control panels to PC9000.

ZX776Z PIR Detector



A surface or corner mount PIR detector with POPIT interface. The coverage is:
Standard Broad 15 m x 15 m (50 ft. x 50 ft.)
Barrier (Optional) 24.4 m x 4.8 m (80 ft. x 16 ft.)
Long Range (Optional) 36.6 m x 3.1 m (120 ft. x 10 ft.)

ZX794Z PIR Detector



A surface or corner mount long range PIR detector with POPIT interface requiring four-wire connection. Includes an OA80 and an OA200 mirror. The coverage is:
Standard OA80 24.4 m x 15.3 m (80 ft. x 50 ft.)
Optional OA120 36.6 m x 7.6 m (120 ft. x 25 ft.)
Optional OA200 61.0 m x 3.1 m (200 ft. x 10 ft.)

ZX835 PIR/Microwave Detector



A 11 m (35 ft.) PIR/Microwave detector with PIR/Microwave supervision requiring four-wire connection.

ZX935Z PIR Detector



A surface or corner mount PIR detector with POPIT interface requiring two-wire connection. The coverage is:
Standard Broad 10.7 m x 10.7 m (35 ft. x 35 ft.)
Barrier (Optional) 10.7 m x 3.1 m (35 ft. x 10 ft.)
Long Range (Optional) 21.4 m x 3.1 m (70 ft. x 10 ft.)
Pet (Optional) 10.7 m x 10.7 m (35 ft. x 35 ft.) with 21.4 m (70 ft.) Long Range

ZX938Z PIR Detector



A ceiling mount PIR detector with POPIT interface requiring two-wire connection. The coverage is 360° x 18.3 m (60 ft.) when mounted on 2.4 m to 5.5 m (8 ft. to 18 ft.) high ceilings. Pattern consists of 64 zones grouped into 16 barriers, with one additional zone looking straight down from the unit (sabotage). Each barrier is 9.2 m (30 ft.) long and 1.3 m (4.4 ft.) wide at 9.2 m (30 ft.). Choice of two optical modules depending on ceiling height.

ZX970 PIR/Microwave Detector



A surface or corner mount PIR/Microwave detector with a microwave frequency of 10.525 GHz, ±25.000 MHz requiring four-wire connection. The coverage is:
Standard Broad (Included) 21.4 m x 21.4 m (70 ft. x 70 ft.)
Long Range (Optional) 31 m x 3.1 m (100 ft. x 10 ft.)

Multiplex Zone Expansion and Interface Modules

D8125MUX Multiplex Bus Interface



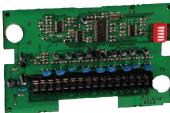
Required to connect multiplex points to the Zonex Bus on the G Series Control Panels. Capable of driving two independent buses.

D5060 Multiplex Programmer



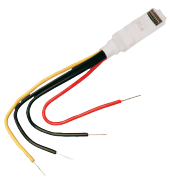
Required for programming the multiplex bus points on G Series Control Panels. It is also used to program and read information to and from a D8125MUX Multiplex Bus Interface. The D5060 is not required to program the DS7457i, DS7457iF, DS7460i, DS7461i, or DS7465i Modules.

DS7432 Eight-Input Remote Module (MX2040)



Provides eight supervised input zones for connection of additional Normally Open or Normally Closed inputs. Connects to multiplex bus. Requires a D8125MUX Multiplex Bus Interface.

DS7457i Miniature Single Input Multiplex Module



Monitors conventional Normally Open or Normally Closed dry contacts and reports their status as multiplex addresses to the panel. Monitors one loop; occupies one multiplex zone address on panel. Requires D8125MUX Multiplex Bus Interface. Fits most intrusion detectors and connects using flying leads. DIP switch programmable.

DS7460i Two-Input Module



Provides two supervised input zones for connection of conventional Normally Open or Normally Closed inputs. Connects to addressable bus. Requires a D8125MUX Multiplex Bus Interface.

DS7461i Single Input Multiplex Module



Used to monitor conventional Normally Open or Normally Closed dry contacts and reports their status as multiplex addresses to the panel. Can monitor one loop; occupies one multiplex zone address on panel. Requires D8125MUX Multiplex Bus Interface. Fits most intrusion detectors and connects using flying leads. Supplied with an enclosure. DIP switch programmable.

DS7465i Input/Output Module



Provides one supervised input for connection of conventional Normally Open or Normally Closed inputs. Also provides one programmable Form C relay to follow system events for the status of specific zones. Connects to addressable bus and occupies two addresses. Requires a D8125MUX Multiplex Bus Interface.

MX250 Series Smoke Detectors



The MX250 and MX250TH are UL Listed, open-area addressable photoelectric smoke detectors. The MX250TH has a built-in +57°C (+135°F) heat detector. Each MX250 requires an MXB2W base. Equipped with rotary switches for address setting and ChamberCheck Self Diagnostics. Requires a D8125MUX Multiplex Bus Interface.

MX775i Addressable PIR Detector



A 7.2 m (50 ft.) microprocessor-based wall mount, addressable PIR detector. Uses Motion Analyzer II Processing. Includes Motion Monitor and three sensitivity settings. Internally pointable field replaceable mirrored optics provide three coverage patterns. Requires a D8125MUX Multiplex Bus Interface. Occupies one zone.

MX794i Long Range Multiplex PIR Intrusion Detector



A microprocessor-based wall mount, DIP switch programmable PIR intrusion detector. Uses Motion Analyzer II Processing and has three sensitivity settings. Field replaceable mirrored optics provide three coverage patterns. Includes an OA80 and an OA200 mirror. Requires a D8125MUX Multiplex Bus Interface. The coverage is:
Standard OA80 24.4 m x 15.3 m (80 ft. x 50 ft.)
Optional OA120 36.6 m x 7.6 m (120 ft. x 25 ft.)
Optional OA200 61.0 m x 3.1 m (200 ft. x 10 ft.)

MX835 Addressable TriTech PIR/Microwave Detector with Animal Immunity



An 11 m (35 ft.) PIR/Microwave detector including PIR/Microwave supervision features. Requires a D8125MUX Multiplex Bus Interface. Occupies one zone.

MX934i Addressable PIR Detector



An 11 m (35 ft.) microprocessor-based wall mount, dipswitch programmable PIR detector. Uses Motion Analyzer II Processing and has two sensitivity settings. Internally pointable field replaceable mirrored optics provide four coverage patterns. Requires a D8125MUX Multiplex Bus Interface. Occupies one zone.

MX938i Addressable PIR Detector



An 18 m (60 ft.) diameter microprocessor-based ceiling mount, addressable PIR detector. Uses Motion Analyzer II Processing. Includes three sensitivity settings field replaceable mirrored optics. Requires a D8125MUX Multiplex Bus Interface. Occupies one zone.

MX950 Addressable PIR Detector



A 7.2 m (50 ft.) microprocessor-based dual technology wall mount, four-wire addressable PIR/microwave detector. Supervision features include anti-masking protection and Motion Monitor. Four coverage patterns using field replaceable Fresnel lenses. Requires a D8125MUX Multiplex Bus Interface. Occupies one zone.

Premises RF Expansion and Interface Modules

D8125INV Wireless Interface



Required to connect Inovonics FA400 Receiver. Includes 2-line by 16-character keypad for enrolling transmitters, and performing premises RF diagnostic functions.

FA116 Executive Programmer



Programs all multi-channel FA series receivers and sets receiver and transmitter parameters. Permits transmitter zoning. The programming cables store in a rear compartment. Available C404 adapter: stereo jack to four-pin header (not included). Features a 16-key tactile keypad and a built-in bench stand. Automatically powers up when cable is connected to a receiver.

FA202 Photoelectric Smoke Detector



Fully supervised 900 MHz transmitter that monitors sensitivity and operational status and transmits a CleanMe signal when service is needed. Features a low profile design and a disposable optical block chamber for on-site cleaning. Operates on two 3 V Lithium batteries.

FA203S Necklace Pendant Transmitter



LED flashes with all transmissions, including supervision, confirming operation. Can be supervised. The transmitter includes a neck cord or can be mounted for fixed position signaling. The FA203S has a single button.

FA203D Necklace Pendant Transmitter



LED flashes with all transmissions, including supervision, confirming operation. Can be supervised. The transmitter includes a neck cord or can be mounted for fixed position signaling. The FA203D has two buttons to minimize false alarms. Both buttons must be pressed simultaneously.

FA204 Pendant Transmitter



Personal emergency signaling device. Supervised pendant comes with neck cord or optional holster (ACC624). Features two side buttons to minimize false alarms; the buttons must be pushed simultaneously.

FA205S Belt Clip/Loop Transmitter



LED flashes with all transmissions, including supervision, confirming operation. Supervised pendant includes a belt clip that can be converted to belt loop. The transmitter can also be mounted for fixed position signaling. The FA205S has a single button.

FA205D Belt Clip/Loop Transmitter



LED flashes with all transmissions, including supervision, confirming operation. Supervised pendant includes a belt clip that can be converted to belt loop. The transmitter can also be mounted for fixed position signaling. The FA205D has two buttons to minimize false alarms. Both buttons must be pressed simultaneously.

FA206DS PIR Transmitter



Passive Infrared transmitter for larger commercial applications. Features advanced signal processing for reduction in false alarms and a tamper protected case. The three-minute sleep time after alarm detection maximizes battery life. Features pointable, mirrored optics. Compatible with optional long-range mirror (OMLR77-3) or barrier mirror (OMB77-3). Coverage is 15m x 15 m (50 ft. x 50 ft.).

FA206i PIR Transmitter



Passive infrared transmitter for residential and high-traffic commercial applications. Features advanced signal processing for reduction in false alarms, and a tamper protected case. Coverage is 15 m x 15 m (50 ft. x 50 ft.).

FA209 Billtrap Transmitter



This transmitter offers a thin profile with the ruggedness of hardwire billtrap. It features a fully supervised metal cash drawer while allowing easy drawer removal. Choose instant transmission or SelectStart feature which delays 10 seconds before transmitting.

FA210 Reduced-Size Universal Transmitter



Fully supervised transmitter with programmable check-ins at five minute, 60 second, 30 second or 10 second intervals. For use with any standard contact or sensor. Comes with case tamper and supports an end-of-line resistor. The FA210 is off-white.

FA210-BN Reduced-Size Universal Transmitter

Fully supervised transmitter with programmable check-ins at five minute, 60 second, 30 second or 10 second intervals. For use with any standard contact or sensor. Comes with case tamper and supports an end-of-line resistor. The FA210-BN is brown.

FA210 Reduced-Size Universal Transmitter



Fully supervised transmitter with programmable check-ins at one minute or five minute intervals. For use with any standard contact or sensor. Comes with case tamper and supports an EOL resistor.

FA210: off-white, FA210-BN: brown

FA210W Reduced-Size Wide Gap Door/Window Transmitter



Fully supervised transmitter with programmable check-ins at five minute, 60 second, 30 second or 10 second intervals. For use with any standard contact or sensor. Comes with case tamper and supports an end-of-line resistor. Includes two built-in magnetic reed switches and magnet that supports a 16 mm (0.63 in.) gap. The FA210W is off-white.

FA210W-BN Reduced-Size Wide Gap Door/Window Transmitter

Fully supervised transmitter with programmable check-ins at five minute, 60 second, 30 second or 10 second intervals. For use with any standard contact or sensor. Comes with case tamper and supports an end-of-line resistor. Includes two built-in magnetic reed switches and magnet that supports a 16 mm (0.63 in.) gap. The FA210W-BN is brown.

FA216L Temperature Transmitter



Ideal for greenhouses, barns/stables, commercial refrigerators, laboratories and computer/telecommunications rooms. The FA216L sends an alarm message if ambient temperature falls to 6°C (43°F).

FA216H Temperature Transmitter



Ideal for greenhouses, barns/stables, commercial refrigerators, laboratories and computer/telecommunications rooms. The FA216H sends an alarm message if the temperature reaches 57°C (135°F).

FA223S Single Button Water Resistant Pendant



The FA223S is a single button pendant that features a water resistant design and a flashing LED indicator. The FA223S includes a neck cord and a belt clip and is ideal for assisted living applications.

FA223D Double Button Water Resistant Pendant



The FA223D is a double button pendant that features a water resistant design and a flashing LED indicator. The LED indicator is subdued to minimize unwanted observation. The FA223D buttons must be pressed simultaneously for alarm. The FA223D is ideal for patrolling guards and bank and retail store employees.

FA250 High Power Universal Transmitter



Fully supervised transmitter with programmable check-ins at one minute or five minute intervals. For use with any standard contact or sensor. Comes with case tamper and supports an EOL resistor. Similar to the FA210 but with more power and up to four times the open-field range. Ideal for buddy systems, very large sites, and/or sites with separate buildings.

FA400 Remote Receiver



Interfaces with the D8125INV Wireless Interface. Provides pathway for FA Series Wireless Transmitters to communicate serially with G Series Control Panels.

FA404R Four-Transmitter, Two-Output Receiver with Relays



Provides two outputs, one for alarm and one for fault. Fully supervises up to four FA transmitters. Includes a knock-out for taking wiring through back of case. Features an easy-to-read alarm, clearly labeled fault LEDs, and a snap-on/pry-off cover with easy access to reset button. Allows users to program transmitters without a programmer by using the default information stored in receiver. Users can select N/O or N/C configuration for each output. Provides mechanical Form C relays for connecting to any panel or for stand-alone wireless applications.

FA416R 16-Transmitter, Four-Output Receiver with Relays



Provides four programmable outputs for alarm or trouble, one global trouble output. Includes a knock-out for taking wiring through back of case. Features easy-to-read alarm and fault LEDs, a snap on/pry off cover with easy access to programmer receptacle and reset button, and case tamper. Allows users to program four transmitters without a programmer by using the default information stored in the receiver. Users can select N/O and N/C configuration for each output. Provides mechanical Form C relays for connecting to any panel or for stand-alone wireless applications.

FA570 High Power Indoor Repeater



Effectively enhances the range of transmissions without wiring or programming. Signal Synchronization Processing minimizes the excessive signal generation problem that occurs with conventional store and forward repeaters. Easy to install – just mount and plug into an AC outlet. The flexible design monitors the battery, and protects the case against tamper (requires optional contacts). The repeater can be programmed as a point for supervising the radio link from the repeater to home receiver. Suited for indoor installations. Allows a virtually unlimited number of repeaters to be added to any job. Allows repeater to be customized for each application.

FA575 High Power Repeater



Effectively enhances the range of transmissions without wiring or programming. Signal Synchronization Processing minimizes the excessive signal generation problem that occurs with conventional store and forward repeaters. Easy to install – just mount and plug into an AC outlet. Flexible design monitors battery and protects the case against tamper (requires optional contacts). The repeater can be programmed as a point for supervising radio link from the repeater to a home receiver. Features attractive weatherproof housing suited for indoor or outdoor installations. Allows a virtually unlimited number of repeaters to be added to any job. Allows repeater to be customized for each application.

Access Control Hardware Accessories

D8201 Low-profile Reader



Weatherproof, low-profile reader in durable, black plastic that can be surface-mounted, bracketed or concealed behind glass, plaster, or any non-metallic surface. The reader uses the D8239-10 Wiegand Proximity Card, the D8239W-10 Wiegand Proximity Card, or the D8238-10 Wiegand Token.

D8201W Low-profile Reader



Weatherproof, low-profile reader in durable, white plastic that can be surface-mounted, bracketed or concealed behind glass, plaster, or any non-metallic surface. The reader uses the D8239-10 Wiegand Proximity Card, the D8239W-10 Wiegand Proximity Card, or the D8238-10 Wiegand Token.

D8203 Mullion Reader



Weatherproof, low-profile reader in durable, black plastic. You can install the reader on door frames or mullions. The reader has built-in, independently controlled piezo sounders and red/green LED indicators to show system status. The reader uses the D8239-10 Wiegand Proximity Card, the D8239W-10 Wiegand Proximity Card, or the D8238-10 Wiegand Token.

D8203W Mullion Reader



Weatherproof, low-profile reader in durable, white plastic. You can install the reader on door frames or mullions. The reader has built-in, independently controlled piezo sounders and red/green LED indicators to show system status. The reader uses the D8239-10 Wiegand Proximity Card, the D8239W-10 Wiegand Proximity Card, or the D8238-10 Wiegand Token.

D8216 Mounting Bracket



L-shaped bracket for mounting low-profile proximity readers to metal doors or window frames behind glass.

D8217 Mounting Bracket



Black plastic bracket for mounting low-profile proximity readers to single-gang or double-gang electrical boxes.

D8218 Mounting Bracket



Brushed metal bracket for mounting vandal-resistant proximity readers to single-gang, double-gang, or 10 cm (4 in.) square electrical boxes. The D8218 includes four vandal-resistant screws with a special tool.

D8221 Swipe Card Reader



Weatherproof swipe card reader. The reader uses the D8231 Wiegand Swipe Card.

D8223 Proximity Reader



Weatherproof, 12.7 cm (5 in.) square charcoal gray proximity reader with a read range of approximately 20 cm (8 in.). Uses the D8236-10 Wiegand Proximity Card.

D8224 Mini Low-profile Reader



Weatherproof, 15.2 cm x 4.3 cm (6 in. x 1.7 in.) charcoal gray proximity reader with a read range of approximately 10 cm (4 in.). Uses the D8236-10 Wiegand Proximity Card.

D8224-SP Switch Plate Reader



Surface-mount reader that mounts to standard gang boxes. Uses the D8236-10 Wiegand Proximity Card.

D8225 Mini Mullion Reader



Weatherproof Wiegand proximity reader with a read range of approximately 7.6 cm (3 in.). Uses the D8236-10 Wiegand Proximity Card.

D8227 Insert Card Reader



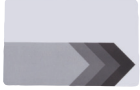
Weatherproof Wiegand insert card reader that reads the D8230-25 Magstripe Card.

D8229 Access Keypad



Weatherproof, stainless steel piezoelectric keypad for PIN-only applications. Outputs in standard 26-bit Wiegand format.

D8230-25 Wiegand Magstripe Card



Randomly-coded Wiegand magstripe card for use with D8227 Insert Card Reader or WB612B/W and WP644B/W Dorado Readers. Shipped in packages of 25.

D8231-10 Wiegand Swipe Card



Randomly-coded Wiegand swipe card for use with the D8221 Swipe Card Reader. Shipped in packages of 10.

D8235A-10 Proximity Card, Non-Photo



Used with the D8225D (decoder) and the D8225R (reader) for the D8112A existing systems only. Shipped in packages of 10.

D8236-10 Wiegand Proximity Card



Randomly-coded Wiegand proximity card for use with D8223, D8223-P, D8224, D8224-SP, and D8225 Proximity Readers. Shipped in packages of 10.

D8238-10 Wiegand Proximity Token



Randomly-coded proximity token with label identifying Wiegand Hex Code for administration. Used with D8201, D8201W, D8203, and D8203W Proximity Readers. Shipped in packages of 10.

D8239-10 Wiegand Proximity Card



Randomly-coded proximity card with label identifying Wiegand Hex Code for administration. Used with D8201, D8201W, D8203, and D8203W Proximity Readers. Shipped in packages of 10.

D8301 Low-profile Reader



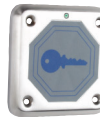
Weatherproof, low-profile reader in durable, black plastic. You can surface-mount or bracket-mount this reader. You can even conceal the reader behind glass, plaster, or any non-metallic surface. The reader has a built-in piezo sounder. You can program the reader in KeyPAC, or Wiegand 26-bit or 34-bit formats. The reader accepts the D8338-10 KeyPAC Wiegand Proximity Token or the D8339-10 KeyPAC Wiegand Proximity Card.

D8301W Low-profile Reader



Weatherproof low-profile reader in durable, white plastic. You can surface-mount or bracket-mount this reader. You can even conceal the reader behind glass, plaster, or any non-metallic surface. The reader has a built-in piezo sounder. You can program the reader in KeyPAC, or Wiegand 26-bit or 34-bit formats. The reader accepts the D8338-10 KeyPAC Wiegand Proximity Token or the D8339-10 KeyPAC Wiegand Proximity Card.

D8302 Vandal-resistant Reader



Weatherproof, stainless steel housing filled with epoxy resin. This reader is appropriate for locations where high resistance to abuse is needed. Read range is approximately 12.7 mm (0.5 in.). You can program the reader in KeyPAC, or Wiegand 26-bit or 34-bit formats. The reader accepts the D8338-10 KeyPAC Wiegand Proximity Token or the D8339-10 KeyPAC Wiegand Proximity Card.

D8304 Extended-range Reader



Weatherproof reader in durable black plastic. The reader has a read range up to 25 cm (10 in.) and on-board piezo sounders. You can program the reader in KeyPAC, or Wiegand 26-bit or 34-bit formats. The reader accepts the D8338-10 KeyPAC Wiegand Proximity Token or the D8339-10 KeyPAC Wiegand Proximity Card.

D8304W Extended-range Reader



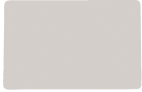
Weatherproof reader in durable white plastic. The reader has a read range up to 25 cm (10 in.) and on-board piezo sounders. You can program the reader in KeyPAC, or Wiegand 26-bit or 34-bit formats. The reader accepts the D8338-10 KeyPAC Wiegand Proximity Token or the D8339-10 KeyPAC Wiegand Proximity Card.

D8338-10 KeyPAC Wiegand Proximity Token



125 kHz operation. Used with the D8301, D8301W, D8302, D8303, D8304, and D8304W KeyPAC readers. Includes label identifying Wiegand Code for administration. Shipped in packages of 10.

D8339-10 KeyPAC Wiegand Proximity Card



ISO thin card. 125 kHz operation. Used with the D8301, D8301W, D8302, D8303, D8304, and D8304W KeyPAC readers. Includes label identifying Wiegand Code for administration. Shipped in packages of 10.

WP612B Dorado Reader



Black Dorado pass-through reader. Connects to systems with Wiegand or clock and data interface format. Reads four or seven digits into 26-bit Wiegand data or 9 card digits into 34-bit Wiegand and reads ABA (American Banker's Association Format) style encoded magstripe cards (security badges, time/attendance badges, parking cards, ATM cards, and credit cards).

WP612W Dorado Reader



White Dorado pass-through reader. Connects to systems with Wiegand or clock and data interface format. Reads four or seven digits into 26-bit Wiegand data or 9 card digits into 34-bit Wiegand and reads ABA (American Banker's Association Format) style encoded magstripe cards (security badges, time/attendance badges, parking cards, ATM cards, and credit cards).

WP644B Dorado Reader



Black Dorado weatherproof pass-through reader. Reads EMPI II style encoded magnetic stripe cards (D8230-25). Read head assembly adjustable to track setting 1 or 2.

WP644W Dorado Reader



White Dorado weatherproof pass-through reader. Reads EMPI II style encoded magnetic stripe cards (D8230-25). Read head assembly adjustable to track setting 1 or 2.

Fire System Accessories

D58A Fire Alarm Kit



Overlays for use with command centers in fire alarm applications. Includes two pull-up reference guides, which fit behind the keypad. Reference guide and overlays are red. The D58A includes overlays for the D1255R Command Center.

D58B Fire Alarm Kit



Overlays for use with command centers in fire alarm applications. Includes two pull-up reference guides, which fit behind the keypad. Reference guide and overlays are red. The D58B includes overlays for the D720R Command Center.

D125B Dual Class B Initiating Module



Provides Class B (formerly Style A) circuits for two loops. Each loop has individual alarm/trouble output; used with fire alarm initiating devices such as smoke detectors; can also be used with powered glass break detectors. Compatible with 12 V detection devices or 2-wire 24 V devices when using a separate 24 V auxiliary power supply. Requires a D138 mounting bracket when used with a D9101 enclosure.

D127 Reversing Relay Module



Interfaces a control panel to direct-wire lines. Reverses voltage or voltage/current (alarm and trouble) over the direct connection to a receiving station.

D129 Class A Initiating Module (Style D)



Interfaces the control panel to fire alarm and water flow initiating devices. Provides Class A (Style D) circuitry for one or two loops, includes adjustable (up to 90 s) reset/retard for each loop. Requires a D138 mounting bracket when used with a D9101 mounting enclosure.

D132B Polarity Reversing Module



Reverses polarity on the smoke detector loop during alarm. Can be used to activate the sounder in smoke detectors with the sounder feature. Works with both 2- and 4-wire circuits and with Class A or Class B Initiating circuits.

D184 and D184A Auxiliary Local Energy Interface Kit



Allows the fire alarm control panel to be connected to an NFPA 1221, Fire Signaling System in municipalities that provide this service (Municipal Box Interface).

D185 Reverse Polarity Signaling Module



Connects a panel with either a single set or a pair of leased telephone company (Telco) lines for NFPA 72, Directly Connected Non-coded Systems, Remote Station, Direct Connect. The module is rated at 12 VDC, 300 mA maximum or at 24 VDC, 143 mA maximum.

D192C Notification Appliance Circuit Module



Supervises Class B notification circuits. Compatible with 12 VDC control panels. Allows an output of 1.8 A at 12 VDC or 24 VDC.

D192G Notification Appliance Circuit Module



Compatible with 12 VDC control panels. Supervises Class B notification circuits. Allows an output of 3.0 A at 12 VDC or 24 VDC.

D278S 12 V Smoke Detector Base



Addressable detector base with a built-in POPIT to provide individual addresses on the FACP data expansion circuit. Compatible with the:
D285 Photoelectric Smoke Detector Head
D285TH Combined Photoelectric and Fixed Heat Detector Head
The base address point is set via a seven-position dipswitch located in the detector base. Device address is independent of the device's location on the circuit.

D298M 24 V Smoke Detector Base, Master



Addressable detector base with a built-in POPIT to provide individual addresses on the FACP data expansion circuit. Compatible with the:
D285 Photoelectric Smoke Detector Head
D285TH Combined Photoelectric and Fixed Heat Detector Head
The base address point is set via a seven-position DIP switch located in the detector base. Device address is independent of the device's location on the circuit. Configured in Class B (two-wire) detector circuits. Requires a 3 k Ω EOL resistor to complete the circuit and provide supervision.

D298S 24 V Smoke Detector Base



Addressable detector base with a built-in POPIT to provide individual addresses on the FACP data expansion circuit. Compatible with the:
D285 Photoelectric Smoke Detector Head
D285TH Combined Photoelectric and Fixed Heat Detector Head
The base address point is set via a 7-position DIP switch located in the detector base. Device address is independent of the device's location on the circuit.

D928 Dual Phone Line Switcher



Allows the panel to operate over and supervise two separate phone lines. Supplied with D162 Phone Cord. Requires two additional D161 or D162 Telco line cords.

D1256 Fire Command Center



Digital fire alarm control station with 16-character vacuum-fluorescent, alphanumeric display. Provides system control over fire areas, housed in red plastic, annunciator programmable text identifying specific alarm, trouble and supervisory conditions.

D1257 Remote Fire Alarm Annunciator



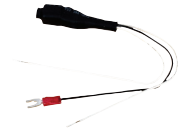
Housed in red plastic, display 16-character customizable English text identifying devices and point of alarm. Housed in red plastic, annunciator programmable text identifying specific alarm, trouble and supervisory conditions. For use in public places. Does not provide system control.

D8109 Fire Enclosure



A 1.5 mm thick (16-gauge) red steel enclosure for control/communicators. UL Listed for Central Station Fire, Local Fire, and Remote Station Fire (NFPA 72). Lock and key set (D101F) included. Measures (H x W x D) 40.6 cm x 40.6 cm x 8.9 cm (16 in. x 16 in. x 3.5 in.).

D8123 Bell Noise Filter



Used to suppress noise impulses emitted from motor or solenoid-type bells. Protects alarm outputs of control panels from such impulses. Designed for fire alarm applications requiring functions such as release of fire doors and elevator recall. Activates when an alarm is initiated in any zone programmed for fire alarm service. Provides two dry Form C contacts rated at 5 A each for control functions. When used with the D9124, the filter requires the use of the D138 mounting bracket.

DS7457iF Miniature Single Input Multiplex Module for Fire Applications



Monitors conventional Normally Open or Normally Closed dry contacts and reports their status as multiplex addresses to the panel. Can monitor one loop, occupies one multiplex zone address on the panel. Requires the D8125MUX. Fits most detectors and connects using flying leads. DIP switch programmable. UL Listed for commercial fire applications.

Power Equipment and Accessories

BAT604 3.0 V Battery



Duracell® DLI23A lithium battery (1.4 Ah rated) use in FA202, FA206I, FA206DS, FA210, FA216 and FA250.

BAT605 3.6 V Battery



Tadiran® TL2150 lithium battery (0.8 Ah rated) used only in the FA206.

BAT607 3.0 V Battery



Customized lithium battery (0.8 Ah rated) used in FA204. Due to differences in metallurgy and electrical characteristics, it is the only battery available for the FA204 pendant.

BAT608 3.0 V Battery



CR2 lithium battery (0.8 Ah rated) for FA203, FA205, FA113, and FA212.

BAT609 3.0 V Battery



Renata® CR2450N lithium coin cell battery (0.5 Ah rated) for FA209 and FA223S.

D113 Battery Lead Supervision Module



Supervises wiring connections for two 12 V batteries connected to the same set of charging terminals.

D122 Dual Battery Harness



Color-coded wire harness with circuit breaker to protect charging circuit when connecting multiple 12 V batteries to a control panel.

D126 12 V, 7 Ah Battery



A fully rechargeable 12 V sealed lead-acid battery.

D940 Super Loop Module



Converts eight points to eight super loops. Increases voltage and current on the circuit. This module is used for retrofit applications to increase the voltage and current on a point.

D1218 12 V, 18.0 Ah Standby Battery



A fully rechargeable 12 V sealed lead-acid battery.

D1224 12 V, 24 Ah Standby Battery



A fully rechargeable 12 VDC sealed lead-acid battery. Acts as an auxiliary power source for accessory modules.

D1238 12 V, 38 Ah Standby Battery



A fully rechargeable 12 VDC sealed lead-acid battery. Acts as an auxiliary power source for accessory modules.

D1240 12 V, 4 Ah Standby Battery



A fully rechargeable 12 VDC sealed lead-acid battery. Acts as an auxiliary power source for accessory modules.

D1640 Transformer

System transformer rated at 16.5 VAC, 40 VA.



D8132 Battery Charger Module

Charges up to a maximum of 27 Ah of batteries.



Enclosures, Brackets, and Connectors

ACC603L Neck cord for FA203 Pendant

Neck cord of simulated leather for use with the FA203 pendant.

ACC603M Neck cord for FA203 Pendant

Neck cord of metal for use with the FA203 pendant.



ACC603P Neck cord for FA203 Pendant

Neck cord plastic for use with the FA203 pendant.

ACC605-BK Belt Clip for FA205 Transmitter

Includes two screws for connecting to the FA205 transmitter.



ACC620 Programming Cable

For connecting transmitter to programming device and programming transmitters. A programming cable is provided with every programming device.



ACC624 Holster

Black leather holster for the FA204 pendant. Includes heavy-duty metal clip for attaching to belt.



ACC630 Transfer Programmer

A timer saver that allows users to reprogram any transmitter at an installation without moving it. A Start button and LEDs guide users through the steps.



D57 Single Gang Conduit Surface Mount

Surface mount box use for installations requiring a conduit to the D269 Independent Point Control or D8227 Insert Card Reader. Dimensions (H x W x D): 103 mm x 78 mm x 57 mm (4.05 in. x 3.06 in. x 2.25 in.).



D101 Lock and Key Set



Optional lock and key set for use with the D2203 standard enclosure and the D8103 optional enclosure.

D110 Tamper Switch



Screw-on tamper switch that will fit all enclosures. Shipped in packages of two.

D137 Mounting Bracket



Used to mount accessory modules in D8103, D8108A, D8109, and D8109L enclosures.

D138 Mounting Bracket, Right Angle



Used to mount accessory modules in a D9101 enclosure.

D161/D162 Dual Modular Phone Cord



D161: 2.1 m (7 ft.)
D162: 61 cm (2 ft.)

D8103 Enclosure



Steel enclosure measuring (H x W x D) 41 cm x 41 cm x 9 cm (16 in. x 16 in. x 3.5 in.).

D8108A Attack Resistant Enclosure



1.2 mm (18-gauge) grey, cold-rolled steel enclosure measuring (H x W x D) 41 cm x 41 cm x 9 cm (16 in. x 16 in. x 3.5 in.). UL Listed for Central Station Fire, Local Fire, and Remote Station Fire applications. Lock and key set included. Requires use of D2402 Mounting Plate.

D9002-5 Accessory Module Mounting Skirt



Mounts inside D8103, D8108A, and D8109 enclosures. Can accept up to six standard 7.62 cm x 12.7 cm (3 in. x 5 in.) cards.

Software Options

D5500C-XXXX Remote Account Manager for Windows® (RAM IV)

The D5500C-XXXX Remote Account Manager Windows® (RAM IV) Software Package allows computers equipped with a Microsoft® Windows® operating system and a modem to program, store records, control, and troubleshoot control panels.

The package supports the following control panels: D7212, D7212B1, D9112, D9112B1, D9412G, D7412G, D7212G, D8112E, D8112E1, D8112G, D8112G1, D8112G2, D8112A, D4412, D6412, D2012, D2112, D2212, D7024, DS9400, DS7240, and DS7220.

Check with Customer Service for a current list of supported products. The package includes the software on CD, the license disk, and the D5370 RAM Security Block.

D5500C-XXXX-LTE Remote Account Manager for Windows® Lite (RAM IV Lite)

The D5500C-XXXX-LTE Remote Account Manager for Windows® Lite (RAM IV Lite) Software Package allows computers equipped with a Microsoft® Windows® operating system to manage accounts and locally or remotely program control panels.

The package supports the following control panels: D7212, D7412, D9112, D9412, D8112E1, D8112G2, D9112B1, D7212B1, D6412, and D4412. Check with Customer Service for a current list of supported products.

The package includes the software on CD, the license disk, and the D5371 RAM Security Block.

D9412G Package

Prod. ID

D9412G



■ Components

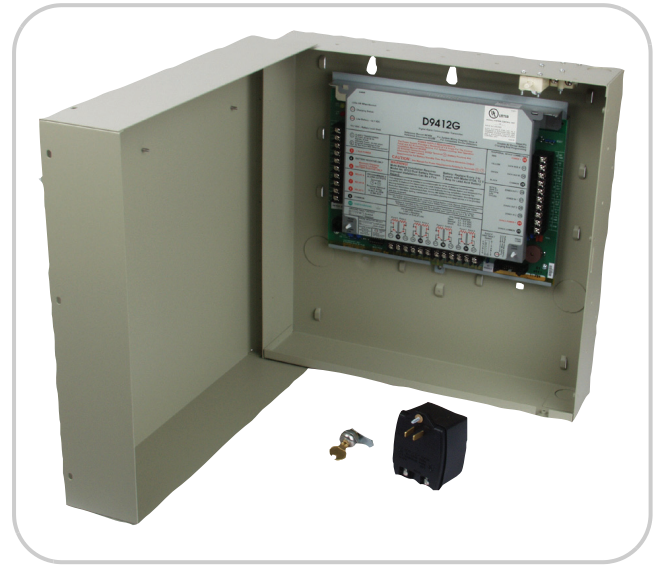
The D9412G package includes:

- one D9412G board
- one mounting skirt
- one faceplate with D9412G label

D9412G-A Attack-Resistant UL Package

Prod. ID

D9412G-A



■ Components

The D9412G-A is an Attack-Resistant UL package that includes:

- one D9412G board
- one D1640 Transformer
- one D8108A Attack-Resistant Enclosure with D101 Lock and Key Set

D9412G-B Fire/Burglar Package

Prod. ID

D9412G-B



■ Components

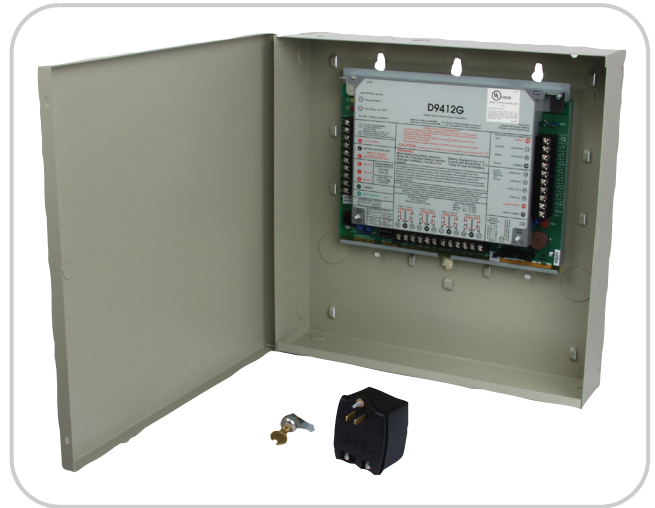
The D9412G-B is a Fire/Burglar package that includes:

- one D9412G board
- one D1640 Transformer
- one D8109 Fire Enclosure with D101F Lock and Key Set
- one D122 Dual Battery Harness
- one D928 Dual Phone Line Switcher
- two D161 7 ft. (2.1 m) Dual Modular Phone Cords

D9412G-C Commercial Burglar Package

Prod. ID

D9412G-C



■ Components

The D9412G-C is a standard Commercial Burglar package that includes:

- one D9412G board
- one D1640 Transformer
- one D8103 Enclosure with D101 Lock and Key Set

