



MS-5024UD Basic System Connections

Color Legend

- (number) Installation Document Number
- (text) Installation Information
- Operating Power
- Initiating Device Circuit

DC Power Outputs (24 VDC)
 Supervise with a power supervision relay A77-716B

Nonresettable Power - 24 VDC filtered, power-limited (300mA) to NAC annunciator circuits. Supervision required.

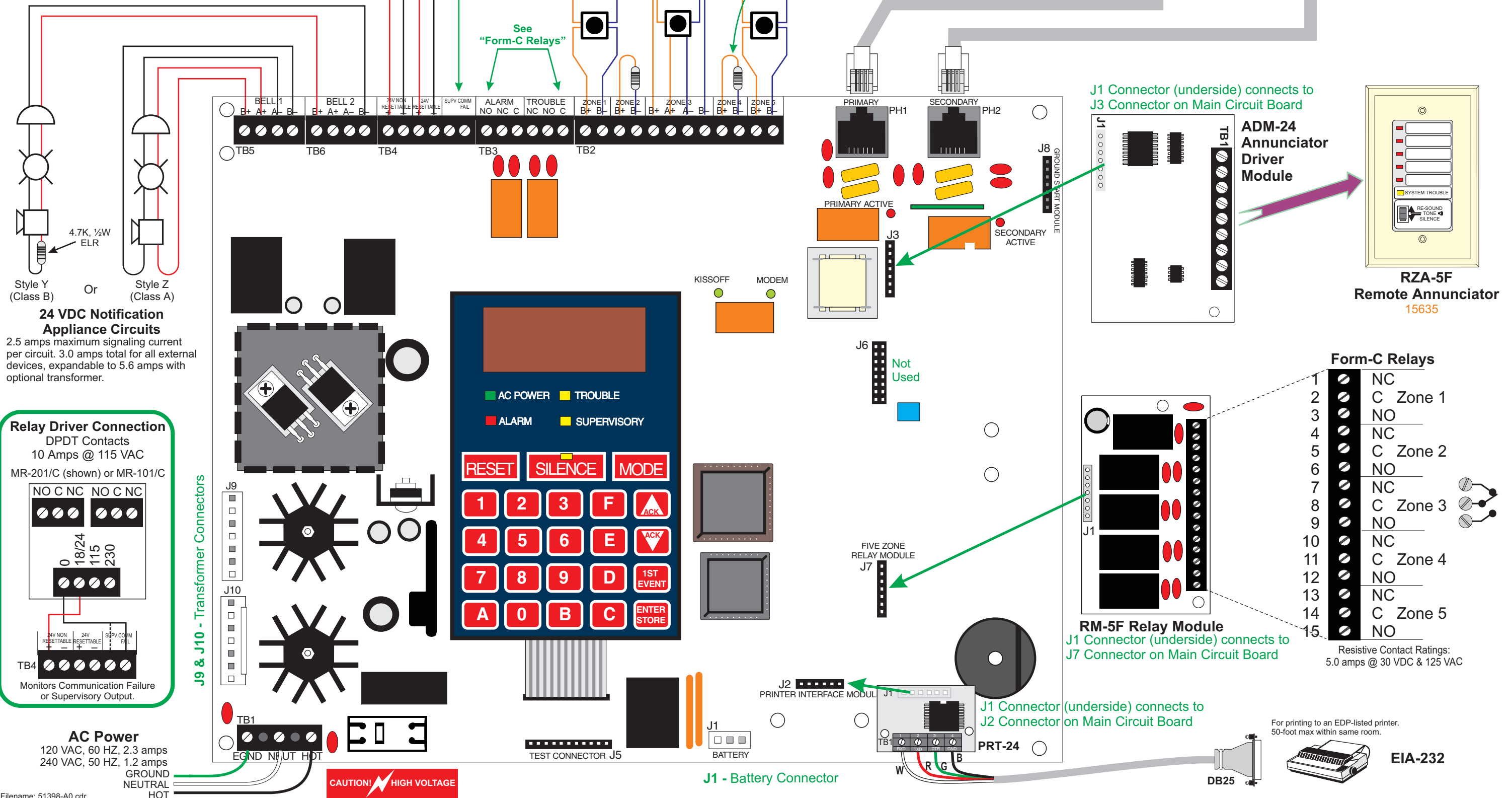
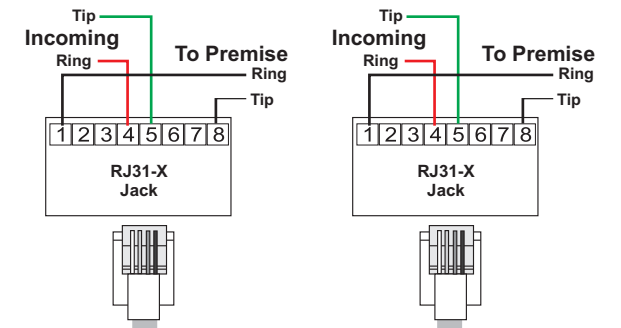
Resettable Power - 24 VDC filtered, power-limited (300mA) to smoke detectors (IDC). Supervision required.

Initiating Device Circuits

A CAC-5F Class A Converter module can be mounted to TB2 to convert the Class B IDCs to Class A IDCs

Form-C Relays
 Resistive
 Contact Ratings
 2.0 amps @ 30 VDC
 0.5 amps @ 30 VAC

NO NC C NO NC C



CAUTION! HIGH VOLTAGE

For printing to an EDP-listed printer. 50-foot max within same room.

EIA-232