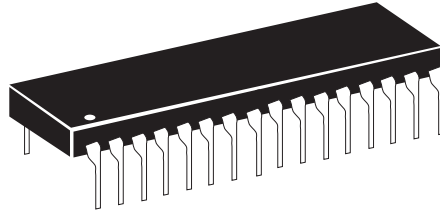


ADT-LCD-40 Series Field Software Change Procedure

Document #51220 Rev. A 6/17/99
ECN 99-262 P/N 51220:A



Firmware Change

This procedure outlines the mechanical installation steps required to install an EPROM in the ADT-LCD-40.

I. Software Versions

Before proceeding with the EPROM installation, check to confirm that the software (EPROM) installed in the ADT Unimode 200 is compatible with the ADT-LCD-40 software.

If software with Part Number #UNIMODE200V3.0 is installed in the ADT Unimode 200, the ADT-LCD-40 Series Annunciator must have software with a Part Number of 73879 to operate with the FACP (Fire Alarm Control Panel). If software with a Part Number of #UNIMODE200V4.0 or higher is installed in the ADT-Unimode 200, the ADT-LCD-40 Series Annunciator must have software with a Part Number of #LCD40V20 or higher to operate with the FACP.

II. Handling precautions for integrated circuits

Static electricity can destroy integrated circuits (ICs)! To prevent damage to the EPROM, a wrist strap and a static-free IC insertion/extraction tool is highly recommended. The manufacturer cannot be responsible for damage to the EPROM as a result of improper handling.

III. EPROM Access and ADT-LCD-40 Removal

1. Remove the upper and lower retaining screws from the trim ring and remove the trim ring.
2. Remove the mounting screws along the outer edge of the ADT-LCD-40 flange.
3. Pull the ADT-LCD-40 out of the 3-gang electrical box to gain access to the connectors in the rear.

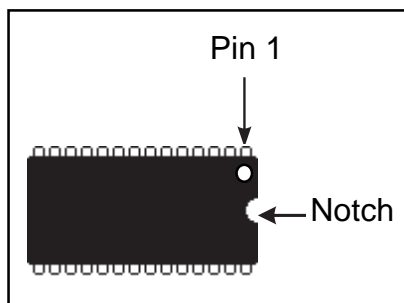
IV. System Power Sources

Always remove primary and secondary power before working on the system!

Prior to disconnecting power from the ADT-LCD-40, be sure to note the orientation of the seven terminal power connector (P2) and the four terminal EIA-485 connector (P1) on the rear of the ADT-LCD-40. These plug-in type terminal connectors are utilized for ease-of-serviceability. When reconnecting these plug-in connectors, **BE SURE** to align the rounded groove on both the plug-in connector and mating connector on the ADT-LCD-40 Printed Circuit Board.

WARNING! Enough force can be placed on these connectors to make them fit in the reverse direction.

1. Disconnect power from the ADT-LCD-40 by removing the seven terminal power connector (P2) from the back of the ADT-LCD-40. This should **ONLY** be done while power is still removed from the ADT-Unimode 200. For ease-of-serviceability, the four position EIA-485 terminal connector (P1) should also be removed.
2. Reverse the procedure, noting proper orientation, for powering-up the ADT-LCD-40 and reinstalling the EIA-485 connector.



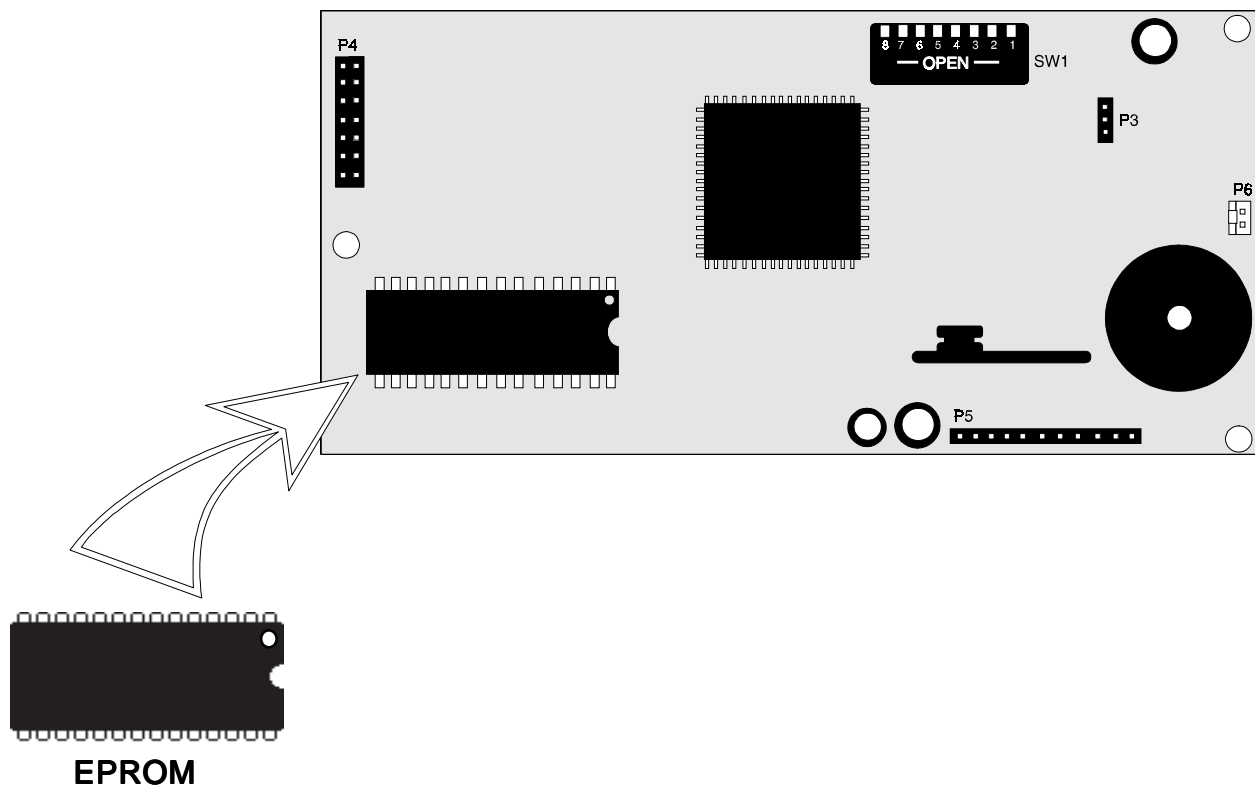
Integrated Circuit Pin Conversion

Observe proper orientation of any IC removed or installed! Note location of Pin 1 with respect to the notch in the body of the IC. The replacement EPROM must be installed in the same manner as the EPROM removed. Failure to observe this orientation will result in destruction of the EPROM. *NOTE: Some ICs may have a small dot instead of a notch for orientation purposes.*

V. EPROM Replacement

Please ensure that power is disconnected and the ADT-LCD-40 is removed from the wall mounting! Observe proper orientation of any IC removed or installed! To replace the EPROM, complete the following steps:

1. Unscrew the three retaining screws holding the printed circuit board to the metal flange. Be careful not to twist the membrane switch ribbon cable while the printed circuit board and flange are separated.
2. Disconnect the two-wire key-switch connector from header P6.
3. Locate the EPROM on the printed circuit board. For EPROM location, refer to illustration below.
4. Gently loosen and remove the EPROM.
5. Install the replacement EPROM. Observe proper orientation! The notch or dot on the IC should be facing toward the center of the board as illustrated below. Use care to insure that the EPROM's pins are not bent or broken during installation.
6. Reconnect the printed circuit board to the flange using the screws from Step 1. Make sure that both the membrane switch connector and the two-wire key-switch connector (P6) are both properly connected.
7. Reconnect the power (P2) and EIA-485 (P1) connections to the rear of the ADT-LCD-40 printed circuit board.
8. After reconnecting the power and EIA-485 connections, apply power to the ADT Unimode 200 and ensure that the ADT-LCD-40 display matches the Unimode 200 LCD display.
9. If no problems are encountered, remount the ADT-LCD-40 with the screws from Step 2 of Section III, **EPROM Access and ADT-LCD-40 Removal.**



Software Changes

The following Table summarizes the ADT-LCD-40 software changes, specifying these changes by EPROM Number and Release Number.

PROM #	Release #	Summary of Changes
73779	1.0	Initial Release
73879	1.1	Corrects random watchdog resets during communication
#LCD40V20	2.0	Accommodates new Siemens 80535 'LB-Step' microprocessor. Improves ADT-LCD-40 data protection.
#LCD40V21	2.1	No functional change. Creates displayed messages that refer to the host fire panel generically worded.