

Transmission Delay

It is possible to delay by 20 seconds the transmission of an alarm or supervisory condition to the central station. By selecting Program Entries 8 through E in the chart below, transmission will be delayed 20 seconds. If no delay is desired, select Program Entries 0 through 6. Selecting a transmission delay requires permission of the local Authority Having Jurisdiction (AHJ).

Addendum For Unimode 5

Document 50319 Rev C 5/29/98 ECN 98-151

Zones 1-5 Function Selection (55-59)

The five zones on the control panel may be programmed as shown below. Program entries alter zone function and transmittal priority.

<u>Program Entry</u>	<u>Function</u>
0	Operates 2-wire smoke detectors
1	Pull Station
2	Normally Open Contact Device
3	Supervisory
4	Supervisory, auto-resettable. Self restore function, is not latched by the control panel.
5	Waterflow, silenceable. Silencing of Silenceable Notification Appliance Circuits allowed. Affects zone 3 only.
6	Waterflow, non-silenceable. Silencing of Silenceable Notification Appliance Circuits not allowed. Must clear waterflow alarm condition and press reset key. Affects zone 3 only.
7	Future use.
8	2-wire smoke detector with 20 second transmission delay.
9	Pull station with 20 second transmission delay
A	Normally Open contact device with 20 second transmission delay.
B	Supervisory with 20 second transmission delay.
C	Supervisory, auto-resettable with 20 second transmission delay.
D	Waterflow, silenceable with 20 second transmission delay.
E	Waterflow, non-silenceable with 20 second transmission delay.
F	Future use.

Zone 1 Function Selection (55)

Factory default for zone 1 is '0', 2-wire smoke detector. Enter '1' for pull station, '2' for Normally Open contact device, '3' for Supervisory or '4' for Supervisory, auto- resettable. If a transmission delay is needed, enter '8, 9, A, B or C' (see above).

Zone 2 Function Selection (56)

Factory default for zone 2 is '0', 2-wire smoke detector. Enter '1' for pull station, '2' for Normally Open contact device, '3' for Supervisory or '4' for Supervisory auto-resettable. If a transmission delay is needed, enter '8, 9, A, B or C' (see above).

Zone 3 Function Selection (57)

Factory default for zone 3 is '0', 2-wire smoke detector. Enter '1' for pull station, '2' for Normally Open contact device, '3' for Supervisory, '4' for Supervisory auto- resettable, '5' for Waterflow silenceable or '6' for Waterflow non-silenceable. If a transmission delay is needed, enter '8, 9, A, B, C, D or E' (see above).

Zone 4 Function Selection (58)

Factory default for zone 4 is '0', 2-wire smoke detector. Enter '1' for pull station, '2' for Normally Open contact device, '3' for Supervisory or '4' for Supervisory auto- resettable. If a transmission delay is needed, enter '8, 9, A, B or C' (see above).

Zone 5 Function Selection (59)

Factory default for zone 5 is '0', 2-wire smoke detector. Enter '1' for pull station, '2' for Normally Open contact device, '3' for Supervisory or '4' for Supervisory auto- resettable. If a transmission delay is needed, enter '8, 9, A, B or C' (see above).

Programming Reference Sheet

--- To enter Programming, press Mode: 7 7 6 4, Enter

₀₀ ₀₁ ₀₂ ₀₃ ₀₄ ₀₅ ₀₆ ₀₇ ₀₈ ₀₉ ₁₀ ₁₁ ₁₂ ₁₃ ₁₄ ₁₅ Addresses 00 to 15 store the Primary Phone Number. Enter 'F' to represent the end of the number. Default is all Fs.

₁₆ Primary Comm Format: 0=ADT FSK II, fixed.

₁₇ ₁₈ ₁₉ Primary Account Code: Valid keys are 0-9. Default = 0000.

₂₀ ₂₁ ₂₂ ₂₃ Primary 24-Hour Test Time. Enter military time(i.e. 1400 for 2 pm).

₂₄ Primary Number Test Time Interval. Enter '0' for 24-hour; '1'-12-hour; '2'-8-hour; '3'-6-hour. Default=0.

₂₅ ₂₆ ₂₇ ₂₈ ₂₉ ₃₀ ₃₁ ₃₂ ₃₃ ₃₄ ₃₅ ₃₆ ₃₇ ₃₈ ₃₉ ₄₀ Addresses 25-40 store the Secondary Phone Number. Enter 'F' to represent the end of the number. Default is all Fs.

₄₁ Secondary Comm Format: 0=ADT FSK II, fixed.

₄₂ ₄₃ ₄₄ Secondary Account Code: Valid keys are 0-9.

₄₅ ₄₆ ₄₇ ₄₈ Secondary 24-Hour Test Time. Enter military time (i.e. 1400 for 2 pm). Default = 0000.

₄₉ Secondary Number Test Time Interval. Enter '0' for 24-hour; '1'-12-hour;'2'-8-hour;'3'-6-hour. Default=0.

₅₀ Alarm Verification. Enter '0' for none; '1' for verification of all 2- wire smoke zones. Default = 0.

₅₁ ₅₂ ₅₃ Alarm Verification Timer. Enter 0 - 72 seconds. Default = 030.

₅₄ Fire Panel/Panel Communicator Selection. Enter '0' for fire panel only; '1' for panel/communicator operation, '2' to enable the control panel as a slave communicator. Default = 0.

Note for Fields 55 through 59: The 8, 9, A, B, C, D and E entries cause a 20 second transmission delay.

₅₅ Zone 1 Function Select. Enter '0' or '8' for 2-wire smoke detectors; '1' or '9' for pull station; '2' or 'A' for normally open contact devices; '3' or 'B' for supervisory devices; '4' or 'C' for supervisory devices (auto resettable).

₅₆ Zone 2 Function Select. Enter '0' or '8' for 2-wire smoke detectors; '1' or '9' for pull station; '2' or 'A' for normally open contact devices; '3' or 'B' for supervisory devices; '4' or 'C' for supervisory devices (auto resettable).

₅₇ Zone 3 Function Select. Enter '0' or '8' for 2-wire smoke detectors; '1' or '9' for pull station; '2' or 'A' for normally open contact devices; '3' or 'B' for supervisory devices; '4' or 'C' for supervisory devices (auto resettable). '5' or 'D' for waterflow (silenceable); '6' or 'E' for waterflow (non-silenceable).

₅₈ Zone 4 Function Select. Enter '0' or '8' for 2-wire smoke detectors; '1' or '9' for pull station; '2' or 'A' for normally open contact devices; '3' or 'B' for supervisory devices; '4' or 'C' for supervisory devices (auto resettable).

₅₉ Zone 5 Function Select. Enter '0' or '8' for 2-wire smoke detectors; '1' or '9' for pull station; '2' or 'A' for normally open contact devices; '3' or 'B' for supervisory devices; '4' or 'C' for supervisory devices (auto resettable).

₆₀ ₆₁ Waterflow Retard Timer. Enter 0-89 additional seconds. Default = 00.

Slave Communicator Configuration

The Unimode 5 may be used as a slave communicator to a host or Master fire alarm control panel (FACP).

All wiring between the Master and the slave communicator is supervised. End of line resistors, 4.7K, should be connected.

In slave configuration, the five zones become five channels that may be triggered by the relay outputs of any host FACP. Zone 1/Channel 1 is used for general alarm, Zone 2/Channel 2 is used for general trouble, Zone 4/ Channel 4 is used for general supervisory, and Zones 3 & 5/Channels 3 & 5 may be programmed as alarm, trouble or supervisory. The Zone 2/Channel 2 wiring must be modified according to the illustration of *Slave Communication Connections* in order to report a trouble condition.

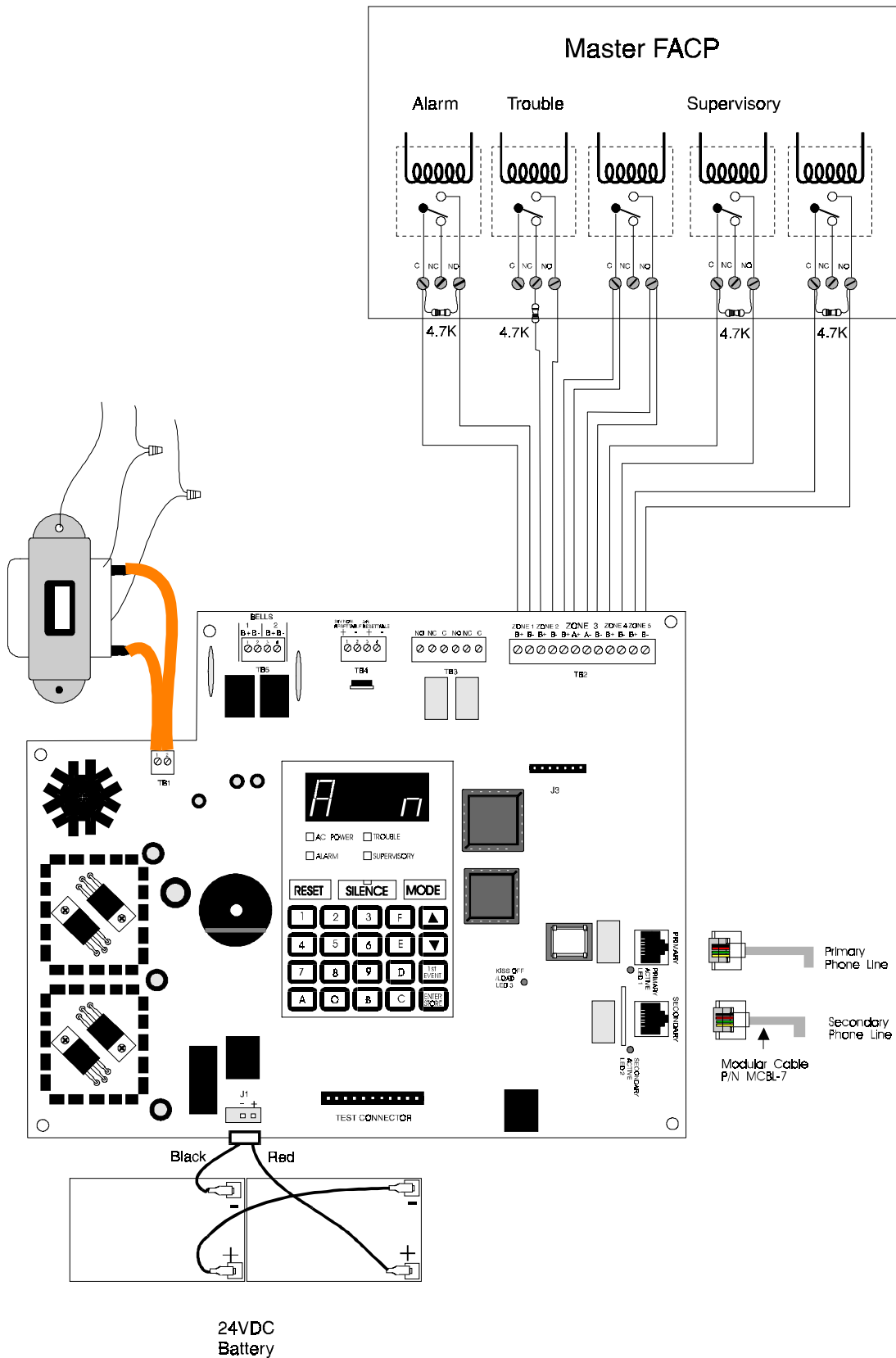
The factory settings for Zone 4/Channel 4 alarm and restoral are altered to report a supervisory (SS4) and supervisory restoral (SR4) by modifying address 58 to a '3' (supervisory).

Location 54 must be programmed to a '2' to enable the control panel as a slave communicator.

Be certain to connect the slave communicator's primary AC power to the same branch circuit as the host FACP.

Note: PAS and verification do not function in Slave Communicator Mode.

Slave Communicator Connections



Relays in Master FACP activate various input circuits on the slave communicator. Messages (event codes) programmed for a particular input circuit (channel) will be transmitted to the central station upon relay activation.