

# ADT Unimode 5 Field Software Change Procedure

Document 50231 Rev D 02/14/02 ECN 01-685

## Firmware Change

This procedure outlines the mechanical installation steps required to install a PROM in the Unimode 5.

### ***Handling precautions for integrated circuits***

Static electricity can destroy integrated circuits (ICs)! To prevent damage to the PROM, a wrist strap and a static-free PLCC IC insertion/extraction tool is highly recommended. The manufacturer cannot be responsible for damage to the PROM as a result of improper handling.

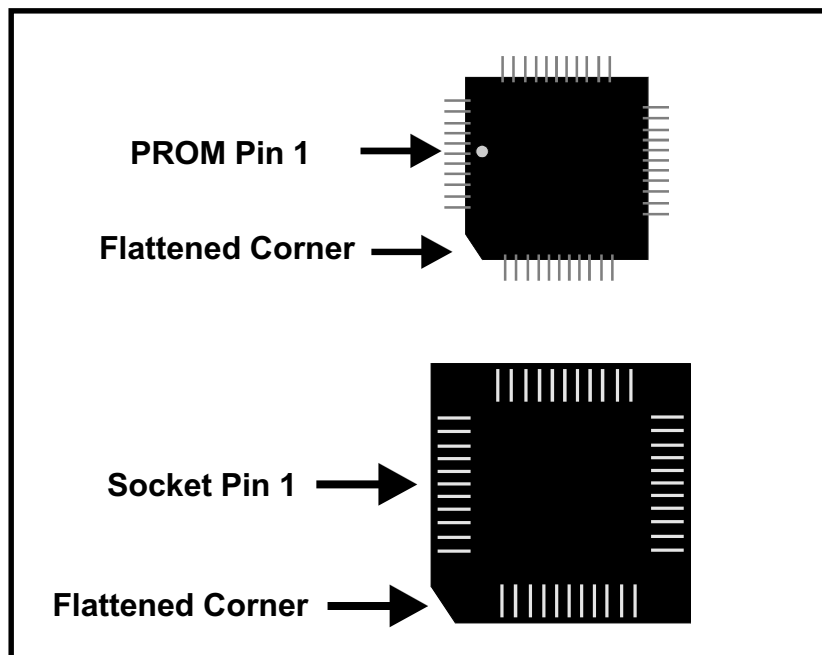
### ***System Power Sources***

Always remove primary and secondary power before working on the system!

1. Disconnect battery backup power before working on the system!
2. Proceed by disconnecting AC power to the panel at the main service circuit breaker (not the circuit breaker on the fire control panel's power supply).
3. Wait 60 seconds to allow for capacitive discharge before touching any of the system's components.
4. Reverse the procedure for powering up the system - AC first, then batteries.

### ***Integrated Circuit Pin Conversion***

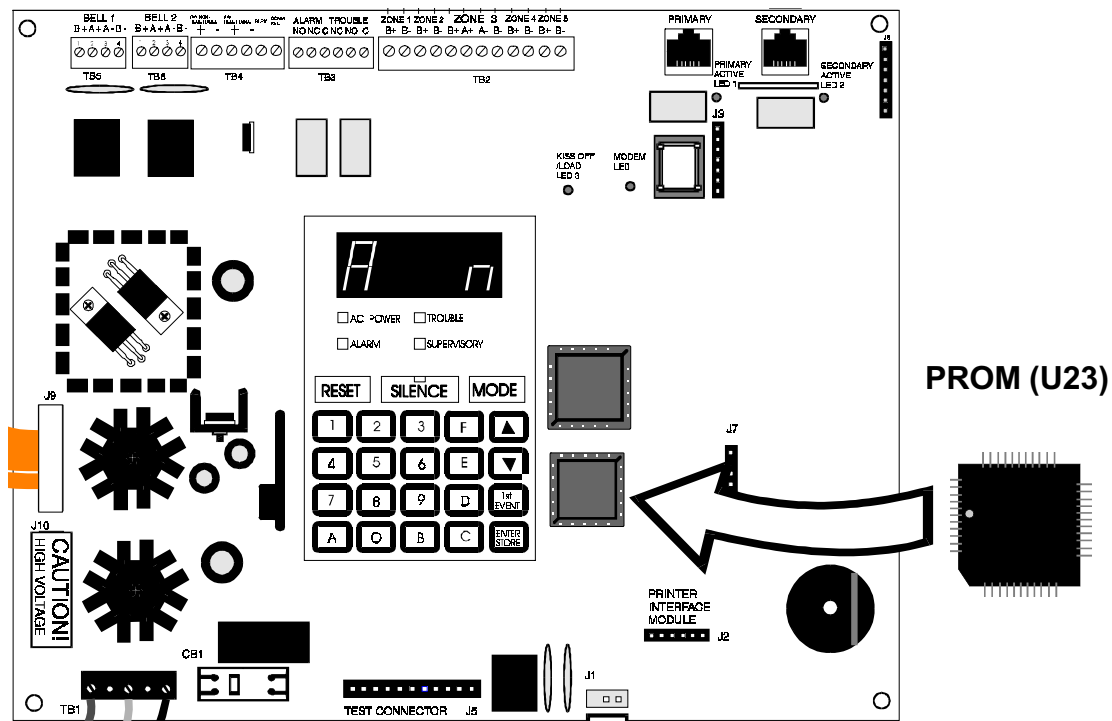
Observe proper orientation of any IC removed or installed! Note location of Pin 1 with respect to the flattened corner and dot on the body of the IC and the relationship to the flattened corner on the IC socket. The replacement PROM must be installed in the same manner as the PROM removed. Failure to observe this orientation will result in destruction of the PROM.



## PROM Replacement

Observe proper orientation of any IC removed or installed! To replace the PROM, complete the following steps:

1. Once all power has been removed, disconnect any option modules (if installed).
2. Locate U23 (center right of the board).
3. Gently loosen and remove the PROM from U23.
4. Install the replacement PROM in location U23. Observe proper orientation! The dot on the IC should be positioned to the left and the flattened corner of the IC should align with the flattened corner of the socket. Use care to insure that the PROM's pins are not bent or broken during insertion.
5. Reconnect power supplies.



## Programming and Testing

Recheck all site-specific programming and test the Unimode 5 after PROM replacement.

## Software Changes

The following Table summarizes the Unimode 5 software changes, specifying these changes by PROM Number and Release Number.

PROM#	Release #	ECN #	Summary of Changes
73780	1.0	95-411	Initial Release
#UMOD5V1.1	1.1	98-151	Year 2000 corrections
#UMOD5V1.2	1.2	01-480	Upgrade software due to microprocessor manufacturer change
#5024UDV40	4.0	01-685	Add Ademco Contact ID Communication Format