



Installation Instructions for the MOD-6

Document 15714 Rev. B 11/7/94
P/N 15714:B ECN 94-394

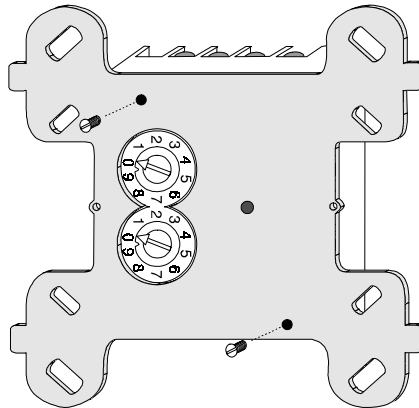
General Description

The MOD-6 Module Mounting Plate is a chassis for the mounting of up to 6 full size Control, Monitor and/or Isolator Modules. The MOD-6 will mount to a 19-inch rack (EIA Standard) and will occupy 2 panel spaces. All hardware for mounting the MOD-6 is provided. The modules must be purchased separately.

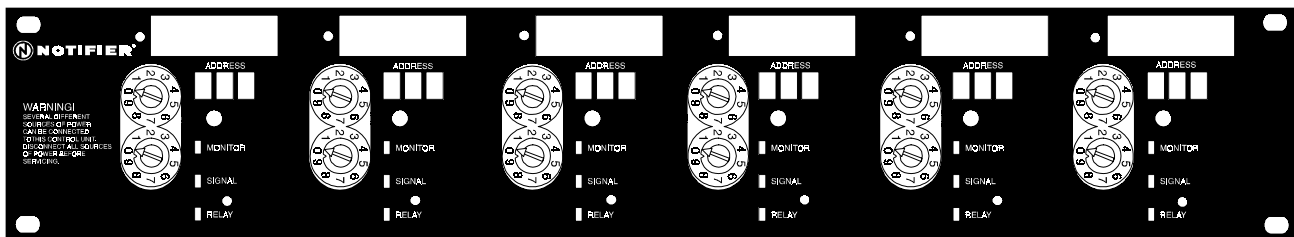
Mechanical Installation

1) Mount the individual modules to the MOD-6 in the following manner:

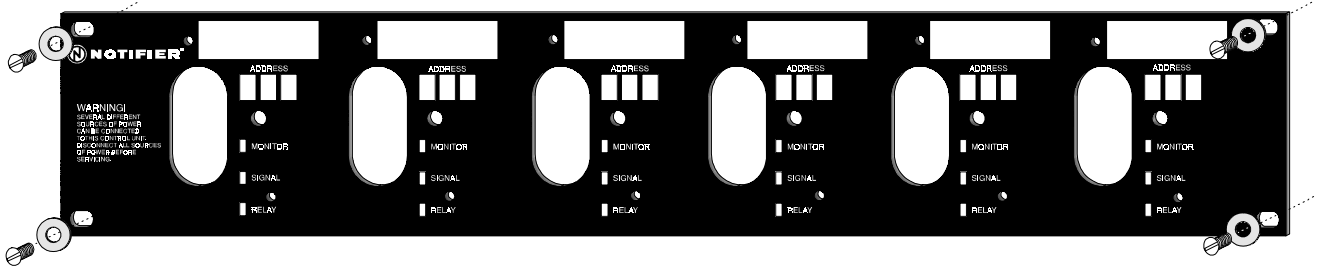
- a) Remove the mounting plate from the module by loosening the 2 screws which attach it to the module body (one of these screws is hidden by the label on the front of the unit).



- b) Carefully place the module body below the MOD-6 with the LED and rotary switches properly aligned. Do not allow any foreign material to be introduced into the body of the module. Do not damage or touch any of the exposed components within the body of the module.
- c) Fasten the module to the MOD-6 using the 2 screws provided (6-32 x .625").
- d) Repeat assembly for each module.



- 2) In the space provided on the front of the MOD-6, label each installed module with the SLC loop number, module address and module type using an indelible pen.
- 3) Install the assembled MOD-6 into the 19-inch rack using the 4 screws and lockwashers provided (10-32 x .375") as shown below.



Electrical Installation

- 1) Each of the modules is equipped with compression-type screw terminals for all field wiring. Refer to the following documents for complete wiring information:

The AM2020/AFP1010 Manual	Document 15088
The AFP-200 Manual	Document 15511
The System 5000	Document 15019
- 2) The cabinet rack into which the MOD-6 is to mounted must be grounded through appropriate means.