
VISTA 40

PARTITIONED SECURITY SYSTEM

MENU DRIVEN PROGRAMMING SUPPLEMENT

ADEMCO

TABLE OF CONTENTS

SECTION A

User-Friendly Programming Mode	3-15
Zone Programming Chart	4
Serial Number Learning/Deleting Programming Chart	5
Alpha Programming Chart	6-8
Device Programming Chart	9
Relay Programming Chart	10-12
Zone List Programming Chart	13
Relay Voice Descriptor Programming Chart	14
Custom Word (Index) Voice Substitutes Programming Chart	15

SECTION B

End User Relay Command Mode (#70) Programming Chart	16
---	----

NOTE: A 5137AD or 6139 Two Line Alpha Console must be used to display the menu's shown in this manual.

INTRODUCTION

This supplement is a detailed "Map" of all the interactive program mode screens. As such it does not go into great detail on any given program subject. Please refer to the VISTA 40 Installation Instructions or the VISTA 40 Programming Guide for complete explanations.

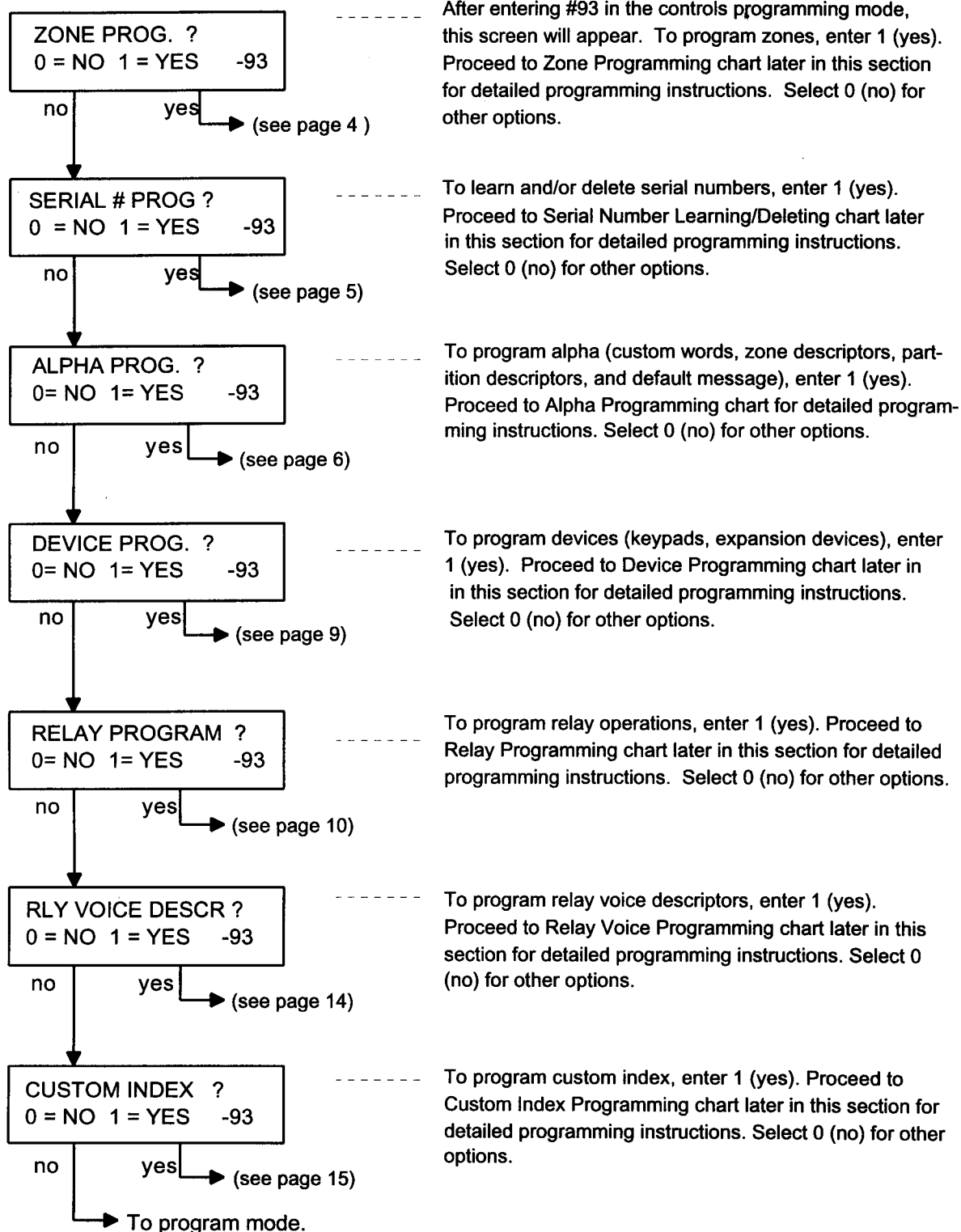
NOTES

1. In the following charts, the "*" symbol indicates the star key on the controls keypad.
2. While in the End User Output Programming, if no keys are depressed for 60 seconds, the control will automatically exit the program/edit mode.

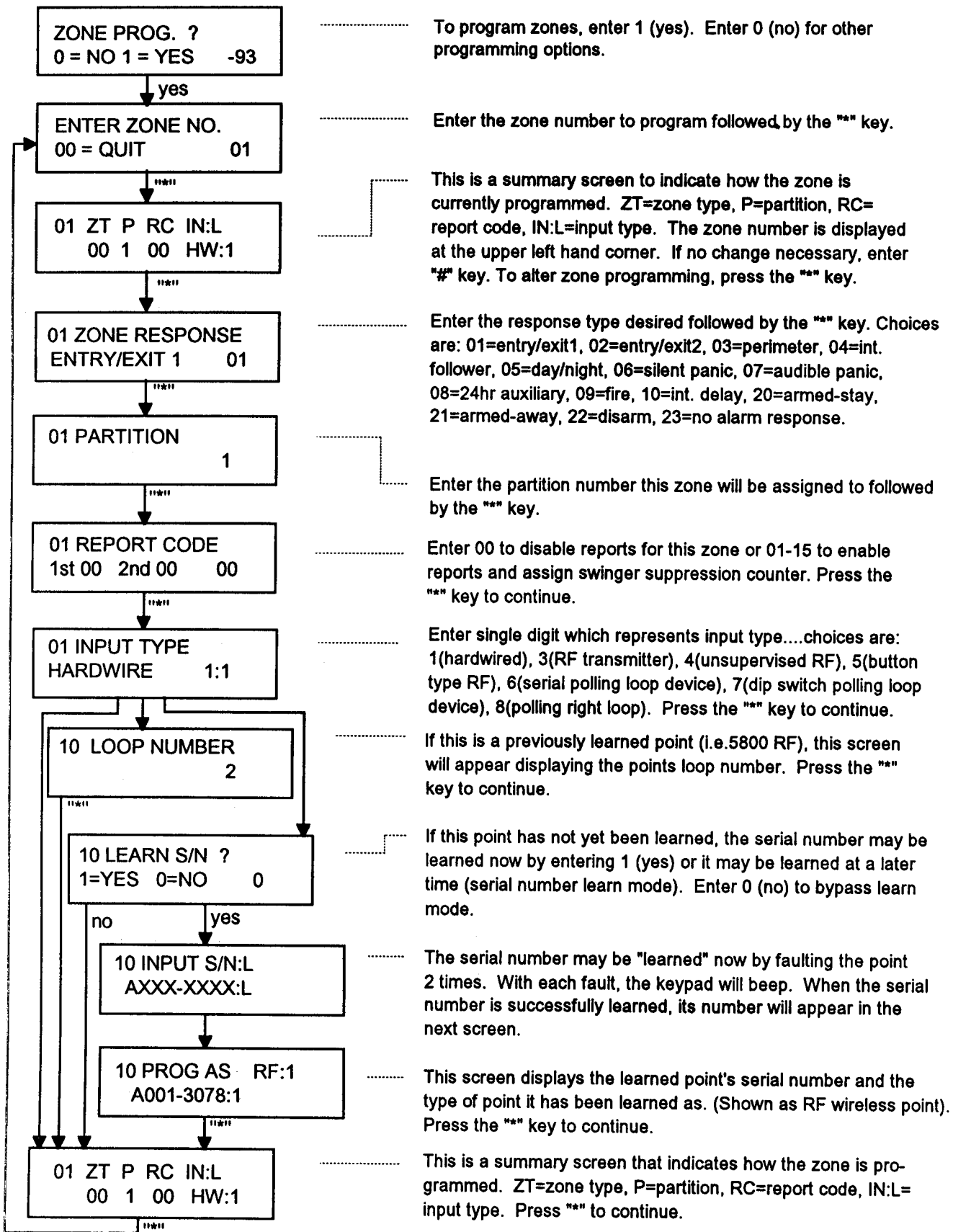
Section A

"USER-FRIENDLY" PROGRAMMING MODE

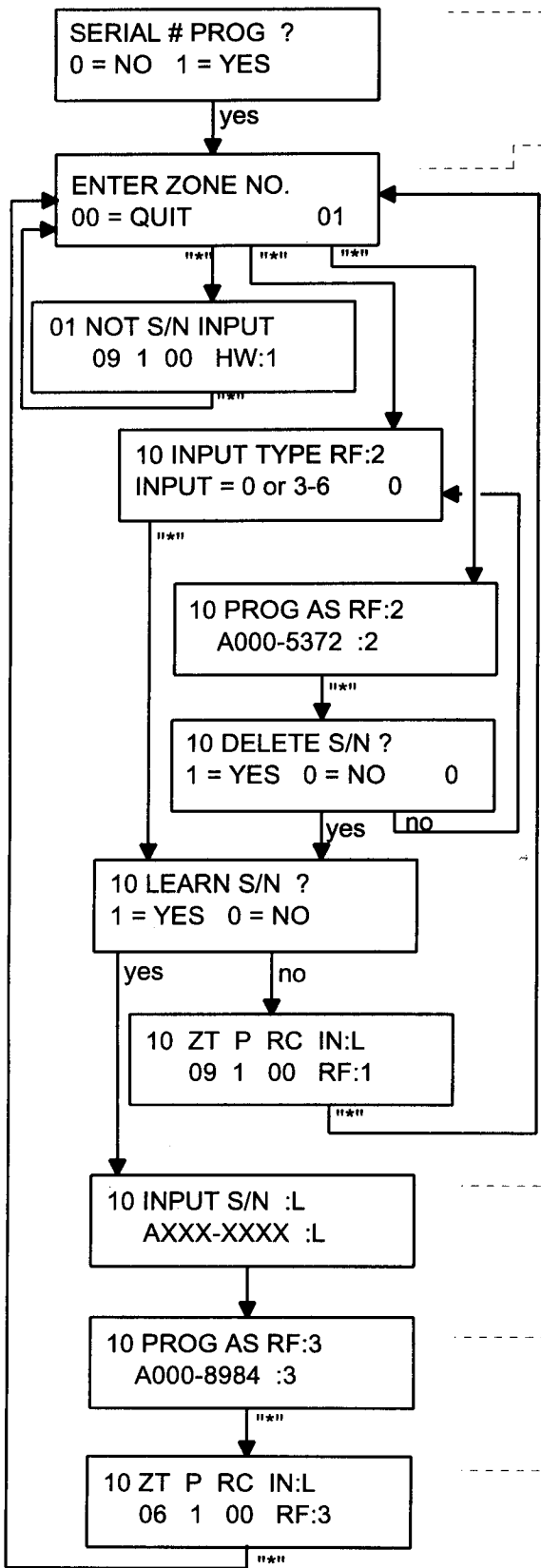
(Enter #93 in controls programming mode)



ZONE - PROGRAMMING CHART



SERIAL NUMBER LEARNING/DELETING - PROGRAMMING CHART



To learn or delete serial numbers, enter 1 (yes). Enter 0 (no) for other programming options.

Enter the zone number of the point to learn (or delete) followed by the "*" key.

This screen will appear if the zone number entered is not a serial number input device (i.e. hardwired zone on control). Press the "*" key to return to Enter Zone No. screen.

This screen will appear when the serial number has not yet been learned for the zone entered. Enter the type of device this zone is: 0=none, 3=RF supervised, 4=UF unsupervised RF, 5=BR button type RF, and 6=serial number polling loop device. Press the "*" key to continue.

These screens will appear when serial number for zone entered has previously been learned. The first screen displays the serial number and the type of device. After pressing the "*" key, the second screen asks whether to delete the serial number. If 0 (no) is selected, the input type screen will appear whereby the type of device may be changed. If 1 (yes) is selected, the new serial number may be learned.

Enter 1 (yes) to learn serial number. Enter 0 (no) to bypass serial number learn mode.

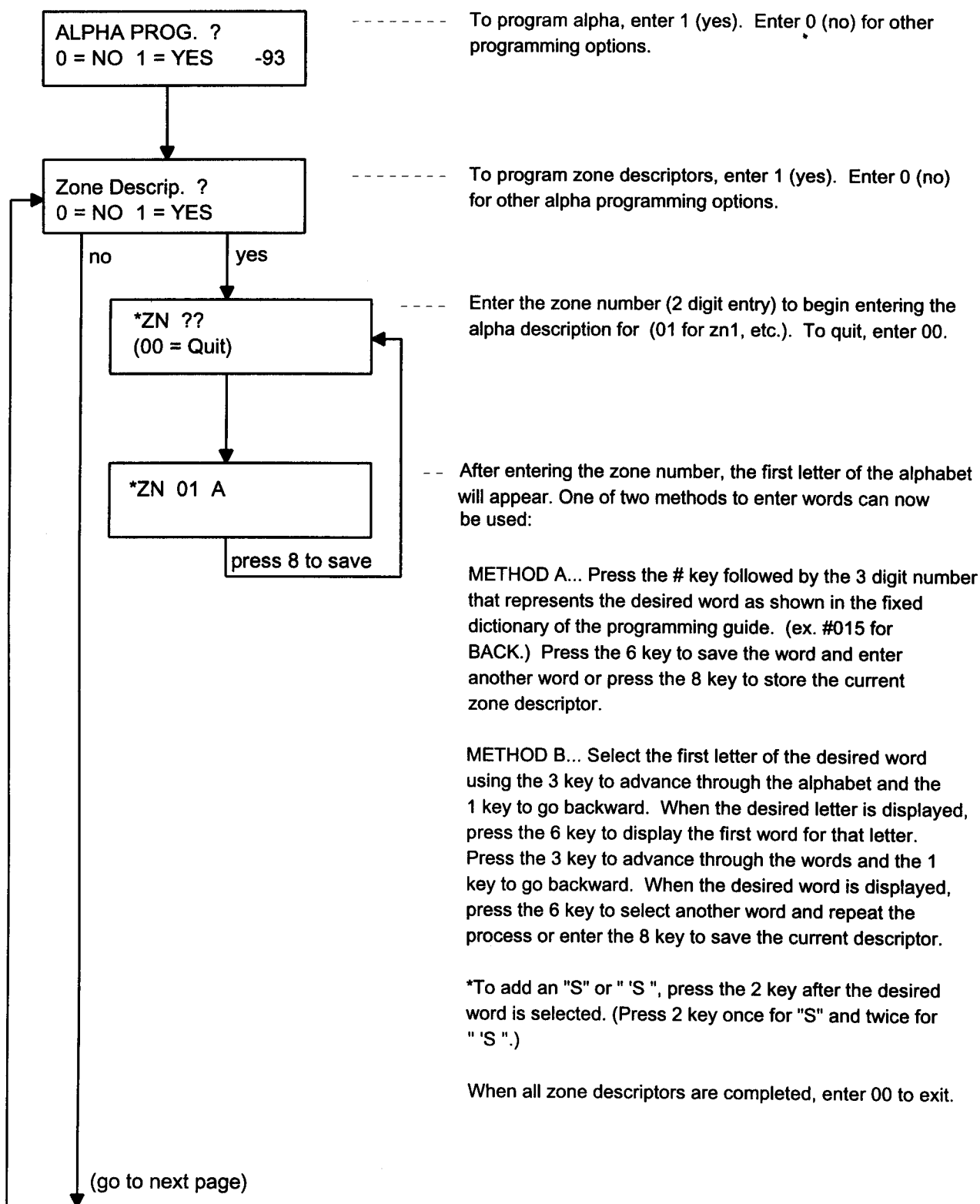
This screen displays a summary of how the zone is programmed now: ZT (zone type), P (partition), RC (report code), IN:L (input type:loop). Press the "*" key to continue.

The serial number may be learned by faulting the point 2 times now. The keypad will emit beeps with each fault. When the serial number is successfully learned, its number will appear on the next screen.

This screen displays a summary of the point's serial number and the type of device (shown as an RF wireless point.) Press the "*" key to continue.

This is a summary screen that indicates how the zone is programmed. ZT(zone type, P(partition), RC(report code), and IN:L(input type/loop). Press the "*" key to continue.

ALPHA - PROGRAMMING CHART



(ALPHA PROGRAMMING - CONTINUED)

Default Scrn. ?
0 = NO 1 = YES

To edit the keypad default screens, enter 1 (yes). Enter 0 (no) for other alpha programming options.

no

yes

Default Scrn. P?
(0 = Quit)

Enter the partition number (1-2) to edit. Enter 0 to quit.

****DISARMED****
READY TO ARM
press 8 to save

After entering the partition number, this screen will appear. The current default message is displayed. The following keys are used to edit the default message:

- 3 - advance through the alphabet and characters
- 1 - go backward through the alphabet and characters
- 6 - move cursor to right
- 4 - move cursor to left
- 7 - insert space or erase existing characters
- 8 - store current message.

When the default message is completed, press the 8 key to save it. The system will ask for the next partition to edit. Enter next partition number or 0 to quit.

Custom Word ?
0 = NO 1 = YES

To add up to 20 custom words to the existing vocabulary of words, enter 1 (yes). Enter 0 (no) for other alpha programming options.

no

yes

Custom Word ?
(00 = Quit)

Enter the custom word number to add/edit (01-20.) Enter 00 to quit.

Custom Word 01

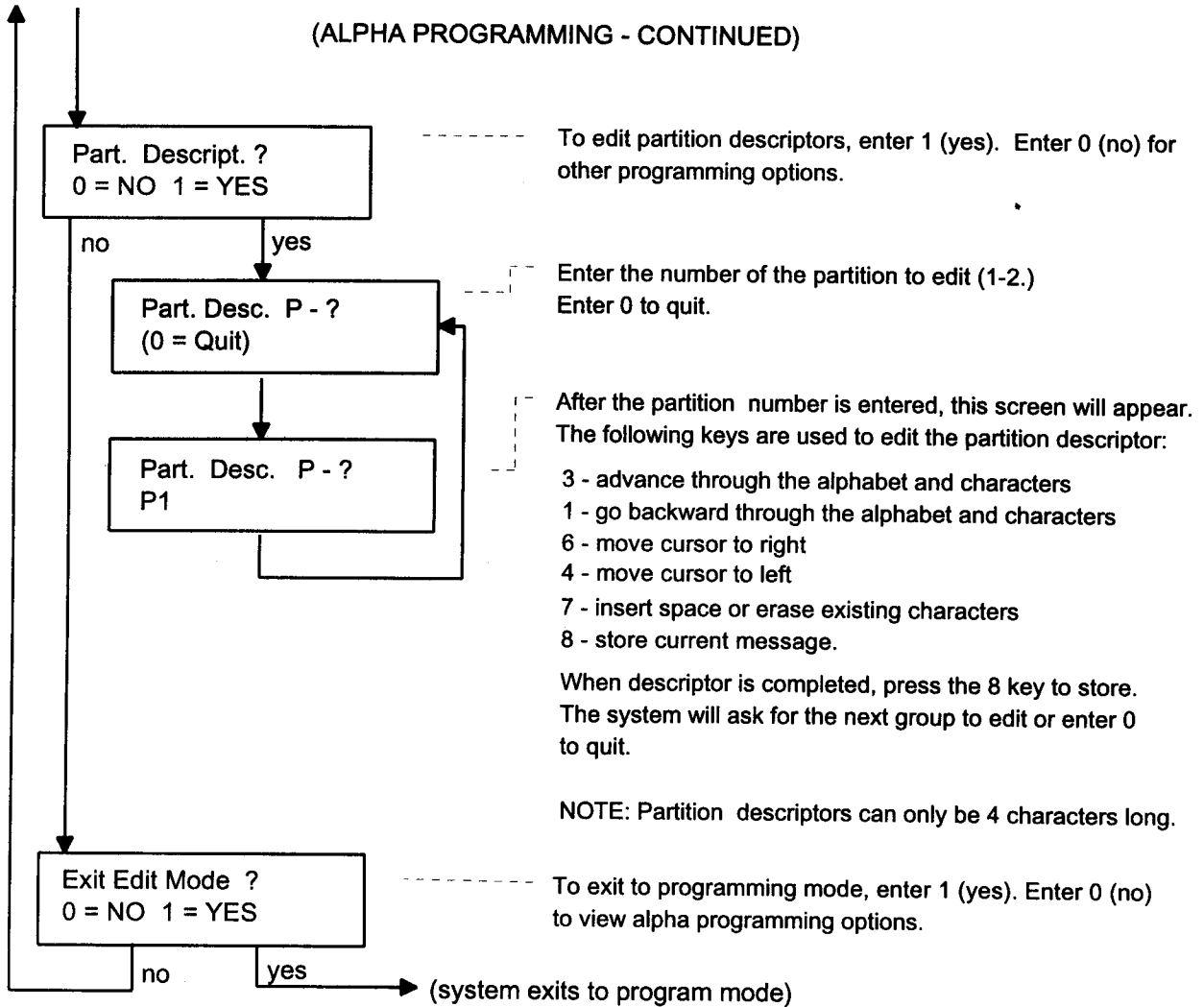
After entering the custom word number, this screen will appear. The following keys are used to edit custom words:

- 3 - advance through the alphabet and characters
- 1 - go backward through the alphabet and characters
- 6 - move cursor to right
- 4 - move cursor to left
- 7 - insert space or erase existing characters
- 8 - store current message

When the custom word is completed, press the 8 key to save. The system will ask for the next custom word to add or enter 00 to quit.

(go to next page)

(ALPHA PROGRAMMING - CONTINUED)



(ALPHA PROGRAMMING - CONTINUED)

Default Scrn. ?
0 = NO 1 = YES

To edit the keypad default screens, enter 1 (yes). Enter 0 (no) for other alpha programming options.

no

yes

Default Scrn. P?
(0 = Quit)

Enter the partition number (1-2) to edit. Enter 0 to quit.

****DISARMED****
READY TO ARM

After entering the partition number, this screen will appear. The current default message is displayed. The following keys are used to edit the default message:

press 8 to save

- 3 - advance through the alphabet and characters
- 1 - go backward through the alphabet and characters
- 6 - move cursor to right
- 4 - move cursor to left
- 7 - insert space or erase existing characters
- 8 - store current message.

When the default message is completed, press the 8 key to save it. The system will ask for the next partition to edit. Enter next partition number or 0 to quit.

Custom Word ?
0 = NO 1 = YES

To add up to 20 custom words to the existing vocabulary of words, enter 1 (yes). Enter 0 (no) for other alpha programming options.

no

yes

Custom Word ?
(00 = Quit)

Enter the custom word number to add/edit (01-20.) Enter 00 to quit.

Custom Word 01

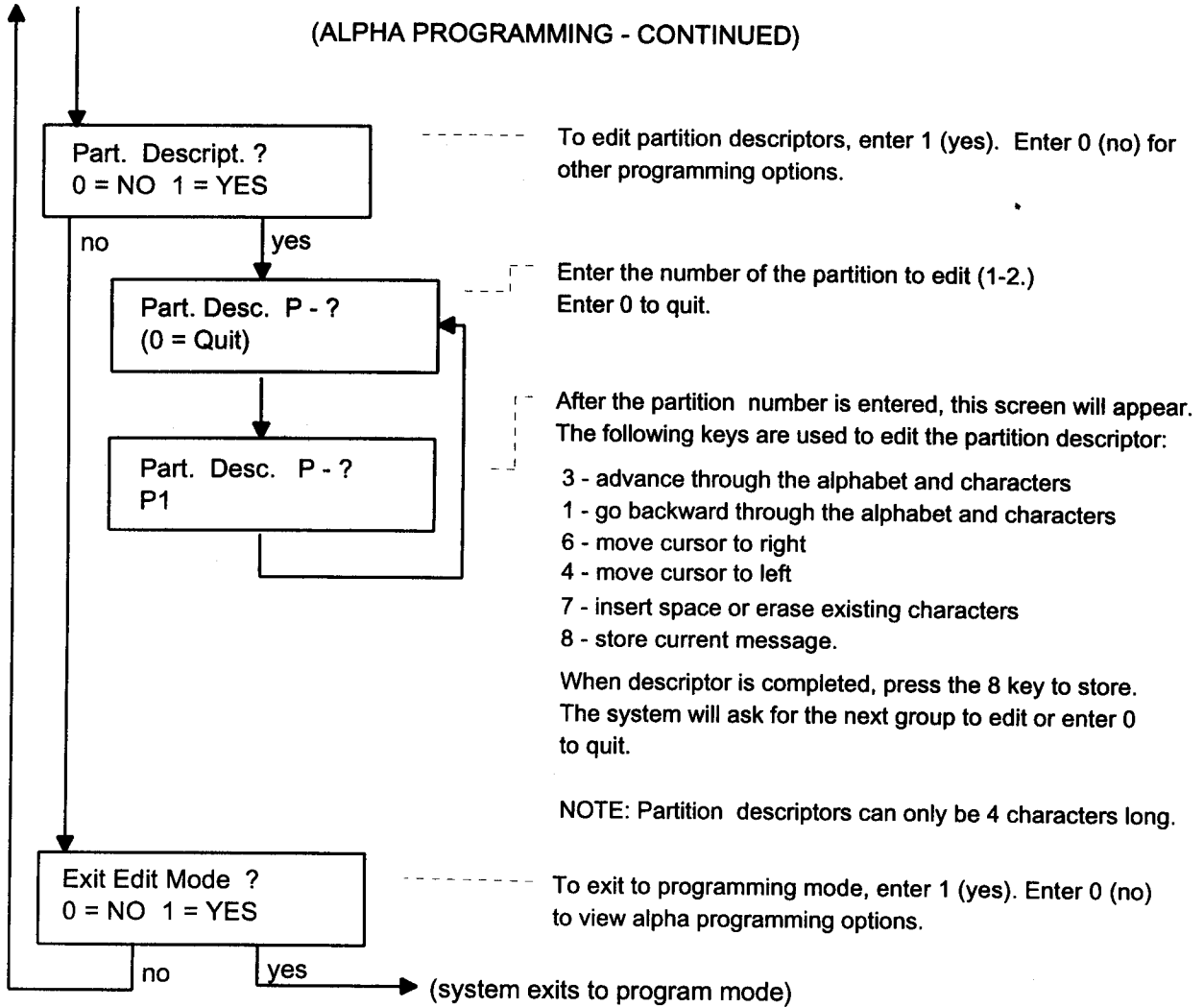
After entering the custom word number, this screen will appear. The following keys are used to edit custom words:

- 3 - advance through the alphabet and characters
- 1 - go backward through the alphabet and characters
- 6 - move cursor to right
- 4 - move cursor to left
- 7 - insert space or erase existing characters
- 8 - store current message

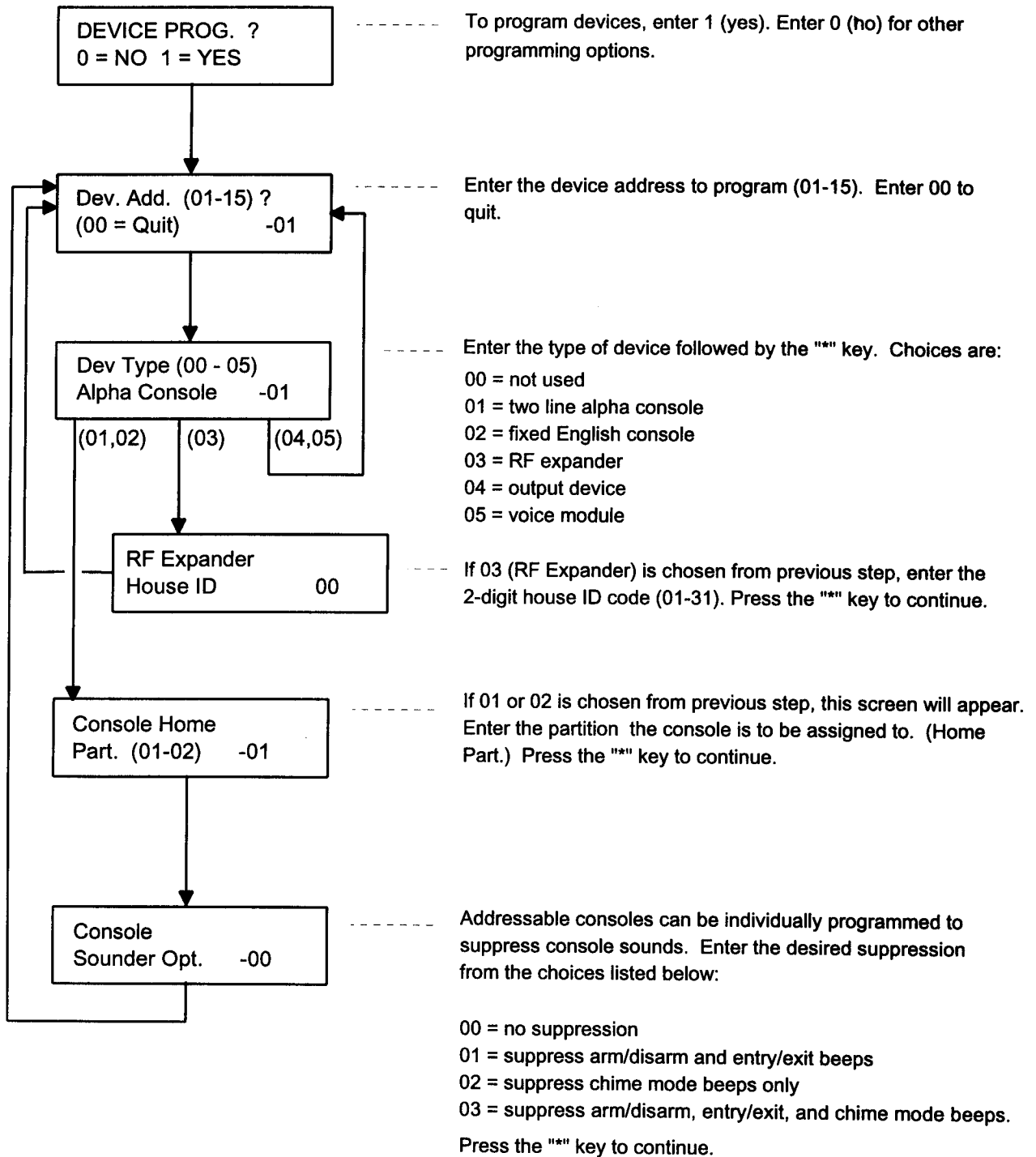
When the custom word is completed, press the 8 key to save. The system will ask for the next custom word to add or enter 00 to quit.

(go to next page)

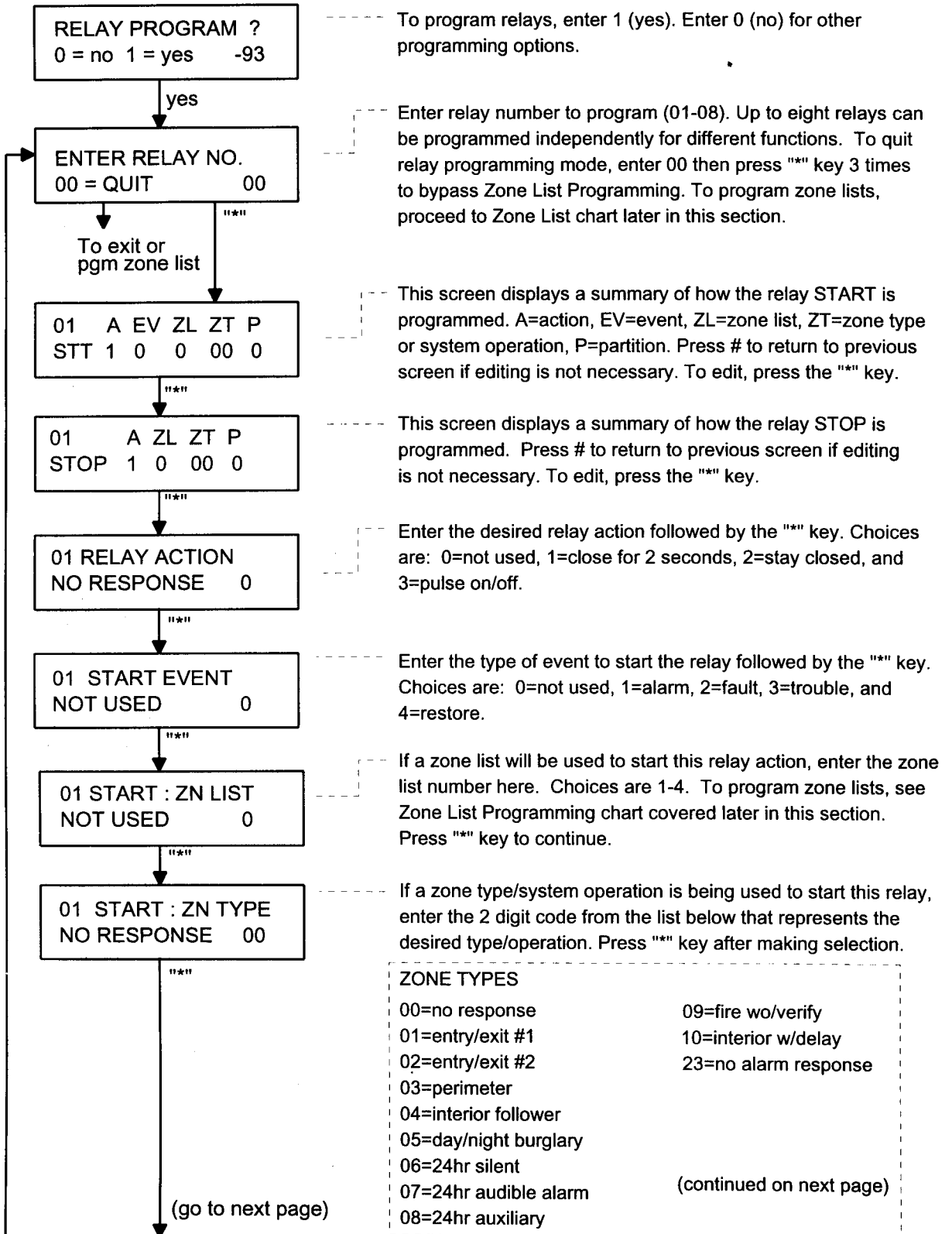
(ALPHA PROGRAMMING - CONTINUED)



DEVICE - PROGRAMMING CHART



RELAY - PROGRAMMING CHART



(RELAY PROGRAMMING CONTINUED)

SYSTEM OPERATIONS

20=arming stay	41=AC power failure
21=arming away	42=system low battery
22=disarming	43=communication failure
31=end of exit time	44=RF battery low
32=start of entry time	45=polling loop failure
33=any burglary alarm	51=RF receiver fail
34=code + # + 71	52=at kissoff
35=code + # + 72	54=smoke detector reset
36=at bell timeout**	55=disarm + 1 minute (stop only)
37=2 times bell timeout**	56=XX minutes (stop only) enter in field 1*74
38=chime	57=YY seconds (stop only) enter in field 1*75
39=any fire alarm	58=duress
40=bypassing	

01 START : PARTN
ANY PARTITION 0

----- Enter the partition that will start the relay. Enter 0 for all partitions or a single partition number from 1-2. Press "*" to continue.
Note: Only applies to zone type/system operation.

01 STOP : ZN LIST
NOT USED 0

----- If a zone list will be used to stop this relay action, enter the zone list number here. Choices are 1-4. To program zone lists, see Zone List Programming chart covered later in this section. Press "*" key to continue.

01 STOP : ZN TYPE
NO RESPONSE 0

----- If a zone type/system operation is being used to stop this relay action, enter the 2-digit code from the previous page that represents the type/operation desired. Press "*" key to continue.

01 STOP : PARTN
ANY PARTITION 0

----- Enter the partition that will stop the relay. Enter 0 for all partitions or a single partition from 1-2. Press "*" to continue.
Note: Only applies to zone type/system operation.

01 RESTRICTION
1 = YES 0 = NO 0

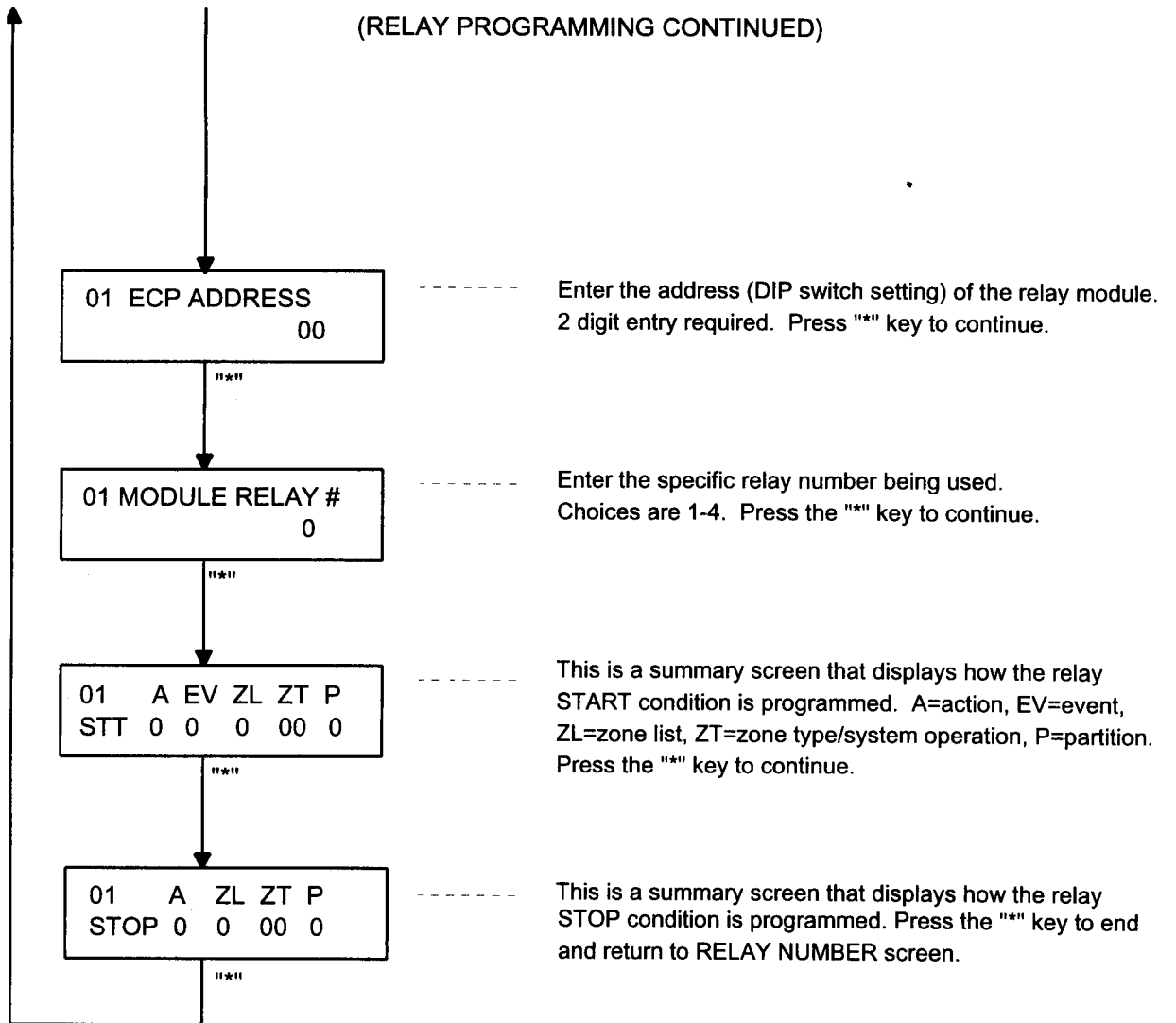
----- The system may have some relays which are not intended to be under end-user control. If it is desired to restrict a relay, enter 1 (yes). Press the "*" key to continue.

01 RELAY TYPE
ECP 1

----- Enter the type of relay output device being used. Choices are:
1 = ECP (4208)
2 = X10
Press the "*" key to continue.

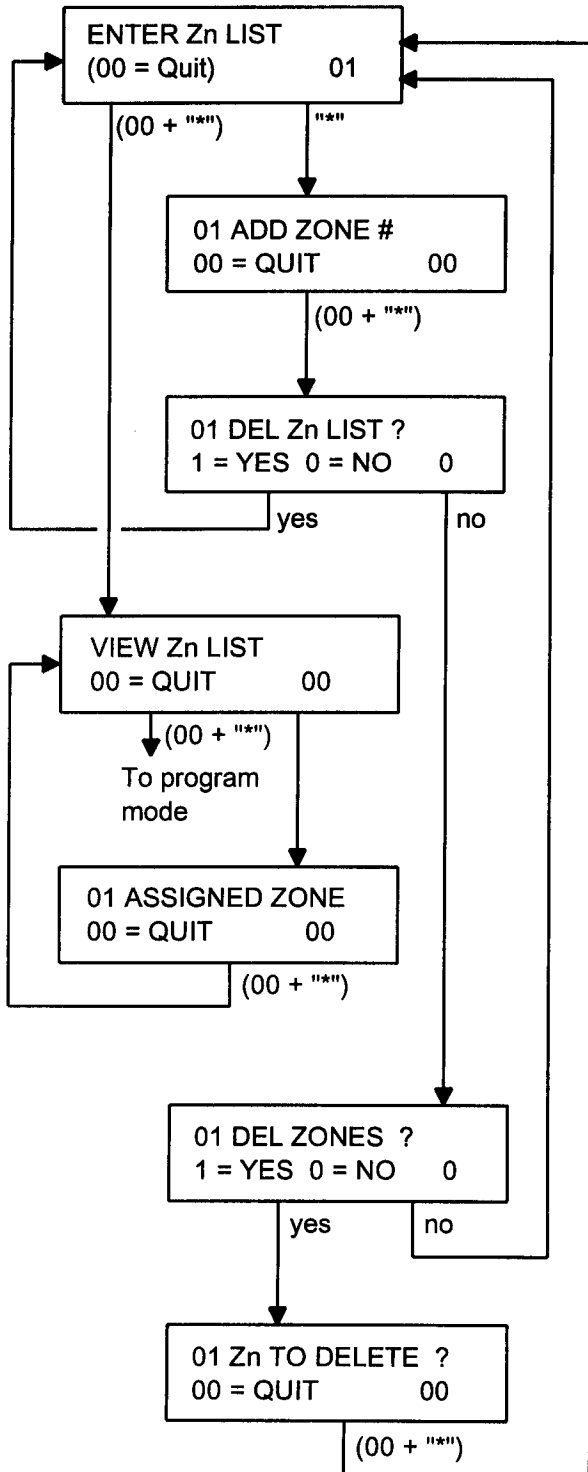
(go to next page)

(RELAY PROGRAMMING CONTINUED)



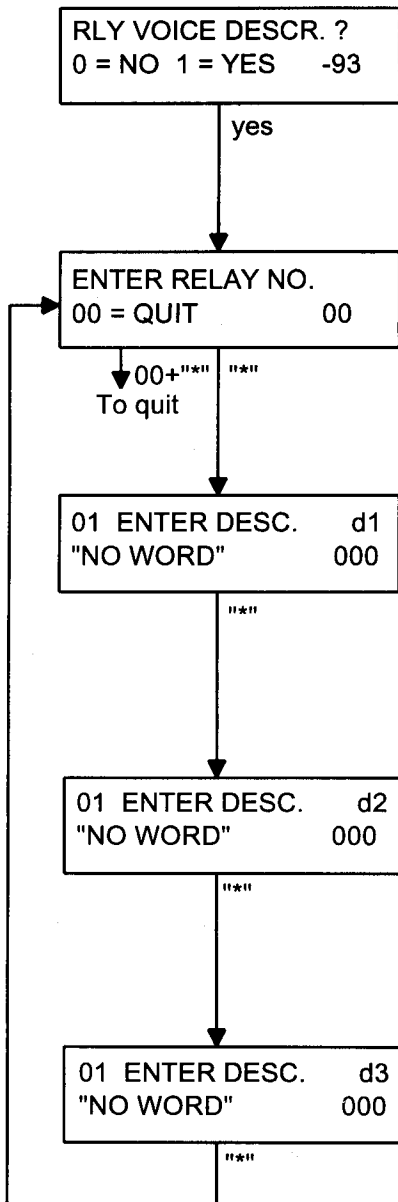
ZONE LIST PROGRAMMING CHART

After entering relay menu items, up to four zone lists can be entered by entering 00 at the ENTER RELAY NO. prompt.



- Enter the zone list number to program (1-4) followed by the "*" key. Enter 00 (quit) to exit and/or view a zone list.
- Add each zone to the zone list by entering the zone number (2 digit entry) followed by the "*" key. Repeat procedure for each zone to add. When all zones have been added, enter 00 followed by the "*" key to exit.
- To delete the zone list, enter 1+(*). To skip this option, enter 0+(*). Press the "*" key to continue.
- To view the contents of a zone list, enter the zone list number (2 digit entry) followed by the "*" key. To exit the zone list mode, enter 00 followed by the "*" key.
- Press the "*" key to scroll through all the zones in the zone list. Enter 00 followed by the "*" key to exit.
- Enter 1+(*). To delete one or more zones from the zone list. Enter 0+(*). If no changes are necessary.
- To delete a zone from the zone list, enter the zone number (2 digit entry) followed by the "*" key. Repeat the procedure for each zone to delete. Enter 00 followed by the "*" key to exit.

RELAY VOICE DESCRIPTOR - PROGRAMMING CHART



----- To program relay voice descriptors, enter 1 (yes). Enter 0 (no) for other programming options.

----- For each of the 8 relays/X-10 modules used, a voice descriptor can be programmed. This descriptor will be announced by the voice module when performing the #70 relay commands via telephone. Enter relay number (01-08) to program. Press the "***" key to continue.

----- From the relay voice descriptor vocabulary list found in the installation manual, enter the 3-digit index number for the first word of the relay descriptor. Press the "***" key to accept entry.

NOTE: To erase an existing word, enter 000 then "***".

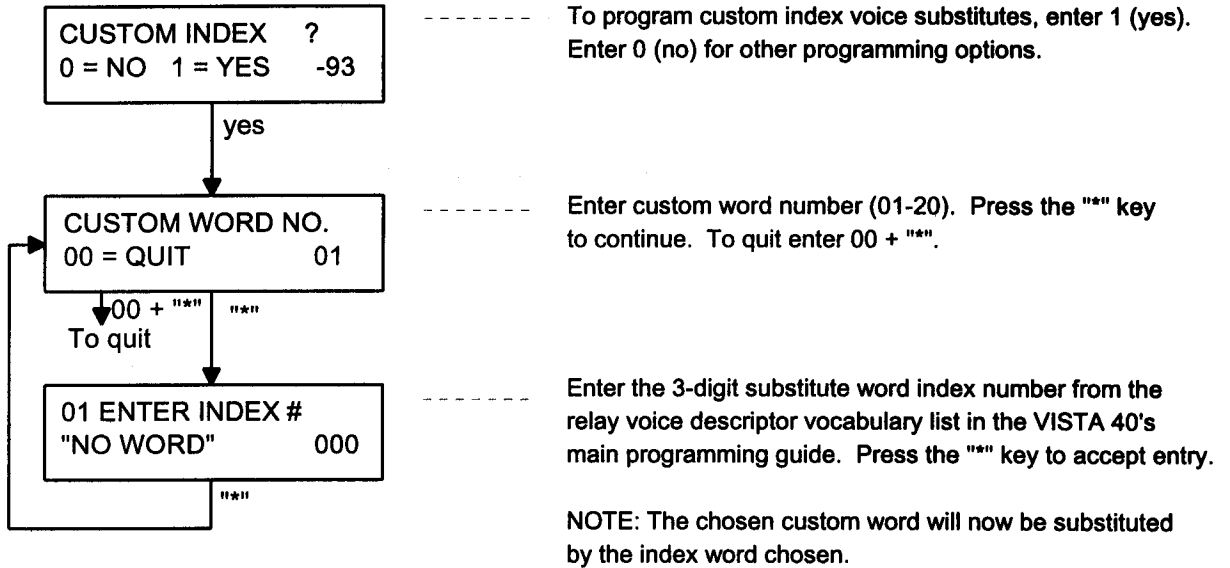
----- If a second word is desired, repeat instructions in previous step. Press the "***" key to accept entry. If second word is not desired, press the "***" key.

NOTE: To erase an existing word, enter 000 then "***".

----- If a third word is desired, repeat instructions in previous step. Press the "***" key to accept entry. If third word is not desired, press the "***" key.

NOTE: To erase an existing word, enter 000 then "***".

CUSTOM WORD (INDEX) VOICE SUBSTITUTES - PROGRAMMING CHART



R